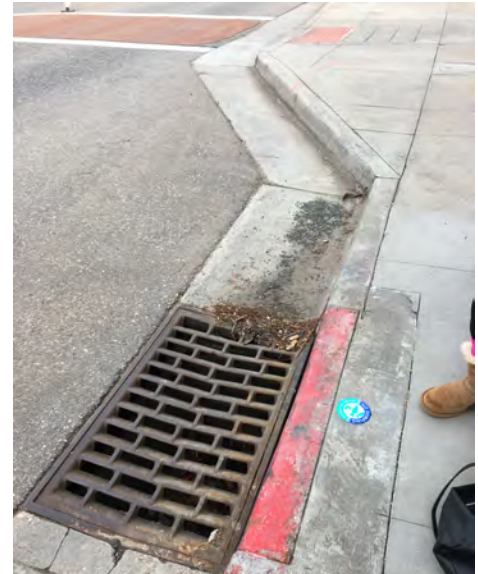




Storm Inlet Marking

Instructions

1. Have one person stand on street side of inlet with a safety vest, as visible warning to any vehicles. Have that person keep track of all persons in the group to ensure safety from any oncoming vehicles.
2. Scrub surface of concrete with wire brush, where the inlet decal is to be applied, to remove any loose dirt.
3. Peel one side of double-sided adhesive and apply to concrete surface.
4. Peel off the exposed side of adhesive and apply the decal firmly to sticky side.
5. Step on decal and twist with foot slightly to make sure its applied firmly.
6. To assist the city in recording which inlets are marked, please take a photo with your phone and send to the city staff in the engineering department/Water Resources Manager. Contact the engineering division at 303-795-3863 to get email and phone contact information.



Questions?

Contact Carolyn Roan with Public Works, 303-795-3836 croan@littletongov.org

Thank you so much for your help in keeping Littleton's waterways clean!!