

---

# MINERAL AVENUE

CORRIDOR ASSESSMENT STUDY – IMPLEMENTATION STRATEGY



# INTRODUCTION

- City Personnel
- Sign-in Sheet
- Comment Forms
  - Please Write Down Any Feedback



# INTRODUCTION

- List of Topics for Presentation
  - Study Summary to Date
  - Recommended Solutions
  - Process Moving Forward
- Resident Input



# PROJECT WEBSITE

The screenshot displays the Littleton Colorado website. At the top, there is a navigation bar with links for News, Calendar, Careers, Rumor Guard, City Code, Contact Us, and Translate. The main header features the Littleton logo with the tagline 'ANYTHING BUT LITTLE' and the word 'COLORADO' in large, light blue letters. Below the header is a secondary navigation bar with buttons for HOME, COMMUNITY, CITY LEADERSHIP, DEPARTMENTS, Littleton **ROCKS!**, and I WANT TO... A search bar is located to the right of these buttons.

The left sidebar contains a menu with the following items:

- Public Works
  - Public Works Projects
  - Staff Directory
  - Click & Fix Littleton
  - Snow Removal
  - Sewer and Storm Drainage
  - Streets
- Transportation Management
  - Mineral Ave Corridor Assessment
    - Study Description
    - Maps & Exhibits
    - Community Meetings
    - Data Collection
    - Evaluation & Analysis
    - Schedule
    - Solutions & Implementations
    - Implementation Costs
    - Notification & Feedback

The main content area is titled 'Mineral Avenue Corridor Assessment' and includes the following text and elements:

[Departments](#) » [Public Works](#) » [Transportation Management](#)

## Mineral Avenue Corridor Assessment

Font Size: [-](#) [+](#) [+](#) [Share & Bookmark](#) [\[+\]](#) [Feedback](#) [Print](#)

In order to keep concerned residents and interested members of the community aware of the progress and up to date on the process regarding the Mineral Avenue Corridor Assessment, the city has created this webpage. Periodic updates will be provided during the course of the study, including:

- information presented at community meetings and a summary of the discussions
- data collected with regard to the study
- any analysis completed in evaluating the corridor
- potential solutions as they are identified
- any changes to the schedule
- other relevant information identified through the course of the study

City staff thanks all the residents who took the time to attend the community meeting held at the Meadowbrook Club House January 27, 2016 to discuss concerns regarding the Mineral Avenue corridor between Platte Canyon Road and Polo Ridge Drive. We hope moving forward that more members of the surrounding community, especially in the Meadowbrook, Polo Reserve-Polo Ridge Farms, Polo Reserve-The Sanctuary, Overlook at the Platte Valley, The Overlook Plateau, Pinnacle at Mountain Gate and Outlook (The Meadows at Platte Valley) neighborhoods, join the discussions as the city uses this opportunity to assess the operations and conditions along Mineral Avenue.

The city will continue to notify interested residents via email of information as more is added to this Mineral Avenue Corridor Assessment webpage. If you are not sure we currently have your information, please provide the preferred contact as directed below.

# PROJECT PURPOSE

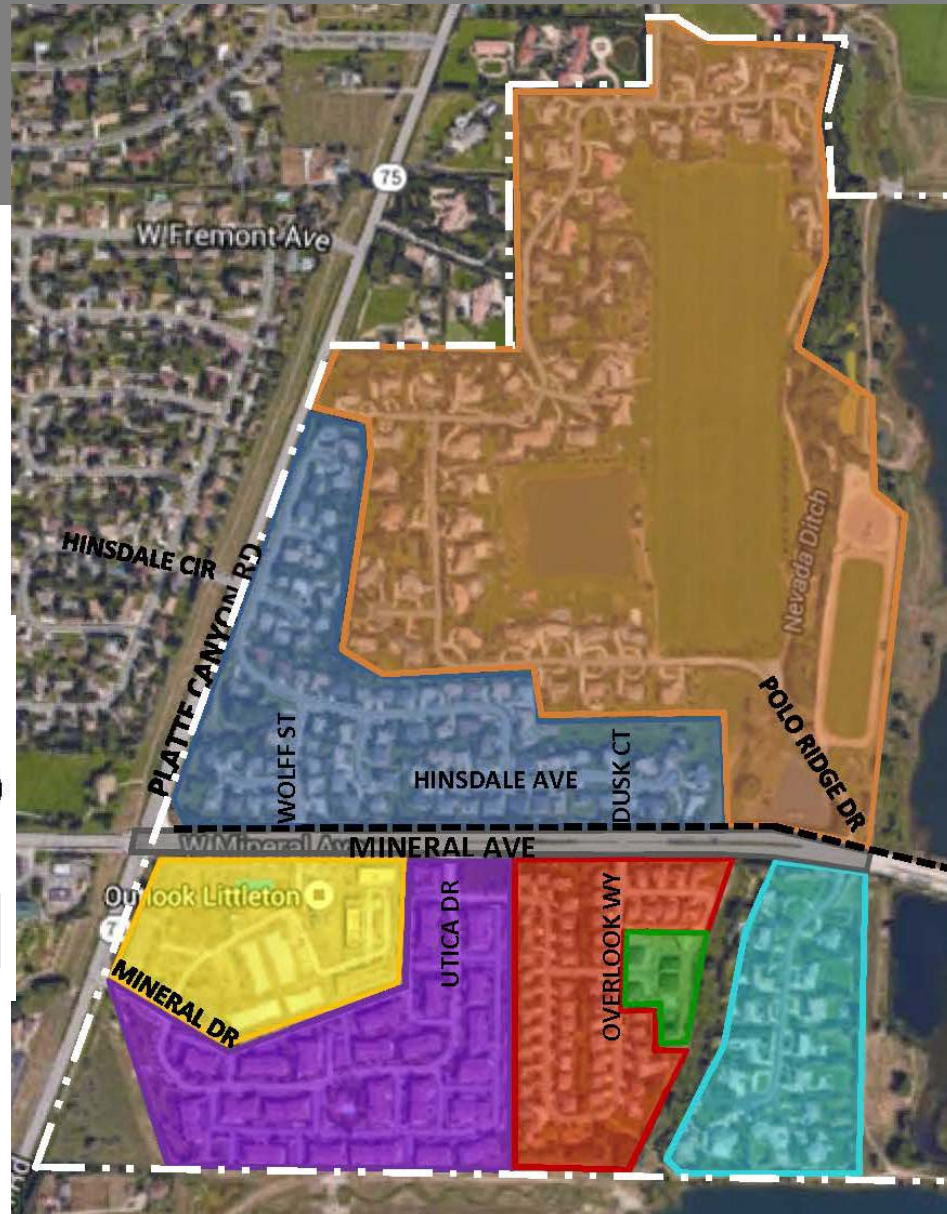
***Provide a safe environment for all users of the Mineral Avenue corridor between Platte Canyon Road and Polo Ridge Drive.***

- Goals – Established based on Concerns Expressed by Residents
  - Primary Goal: evaluate the current level of safety and operations in order to improve the efficiency and safety for all users of the corridor
  - Secondary Goals: providing accessibility for the adjacent City of Littleton neighborhoods, while accommodating efficient flow for all users through the corridor
  - Users: pedestrians, bicyclists, transit operators, cars and service vehicles
- Process
  - Community Meetings
  - Data Collection, Assessment & Solutions
  - Recommendations to City Council

# STUDY AREA

## Legend:

-  - Meadowbrook
-  - Polo Reserve – Polo Ridge Farms
-  - Polo Reserve – The Sanctuary
-  - Overlook at Platte Valley
-  - Pinnacle at Mountain Gate
-  - The Overlook Plateau
-  - Outlook (The Meadows at Platte Valley)
-  - Corridor Study Limits
-  - City of Littleton Limits
-  - Mineral Ave Trail



# DATA COLLECTION

- Volumes – Roadway Daily & Intersection Peak Hour
- Police Reporting – Enforcement & Corridor Accident History
- Speeds – Tubes, Radar Trailer, Radar Gun & Drive Along
- Delay – Left Turn Movements
- Land Use – Recent & Future Developments
- Transit – Regional Transportation District Routes
- School Buses – Neighborhood Routes





# DATA ASSESSMENT

- Volume Concern – Mineral Ave Growth; Meadows at Platte Valley Trips
- Accident Concern – Growing Number & Severity
- Speed Concern – Unsafe Condition
- Delay Concern – Difficult Left Turn Movements







# POTENTIAL SOLUTIONS CONSIDERED

## 1. Mineral Avenue Corridor

- Right Turn Acceleration/Deceleration Lane
- Narrowed Lanes
- Widened Center Median
- Reduced Speed Limit
- Specific U-turn Locations
- Deter Vehicle Queues from Blocking Intersections
- Median Nose Reductions

## 2. Mineral Avenue/Platte Canyon Road Intersection Modifications

- NB/SB Dual Left Turn Lanes
- Channelized NB Right Turn Lane
- Traffic Signal Modifications

# POTENTIAL SOLUTIONS CONSIDERED

3. Wolff St/Dusk Ct/Polo Ridge Dr Crossings – Provisional Improvements
  - Crosswalk Striping
  - Trail Signage
  - Blank Out Signs at Polo Ridge Drive Pedestrian Signal
4. Wolff St/Dusk Ct/Polo Ridge Dr Crossings – Ultimate Improvements
  - Curb Extensions
  - Raised Crosswalk
  - Additional Landscaping
5. Mineral Drive Full Access to Platte Canyon Road
6. Meadowbrook Additional Access to Platte Canyon Road
  - Option 1: Fremont Court
  - Option 2: Easter Court



## POTENTIAL SOLUTIONS CONSIDERED

7. Traffic Signal at Wolff Street
8. Pedestrian Signal Modifications to Traffic Signal
9. Mineral Avenue Center Acceleration Lanes

# RECOMMENDED SOLUTIONS

- Concept Design
  - Mineral Avenue Modifications
  - Platte Canyon Road Movements
  - Side Street Improvements
- Phasing Plan
- Cost Estimates





# MINERAL AVENUE MODIFICATIONS

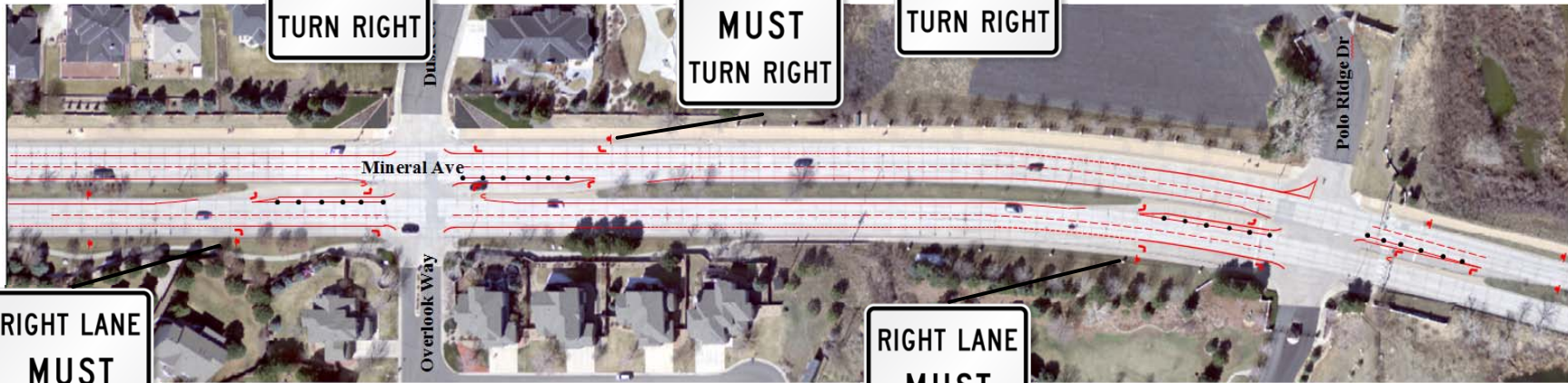
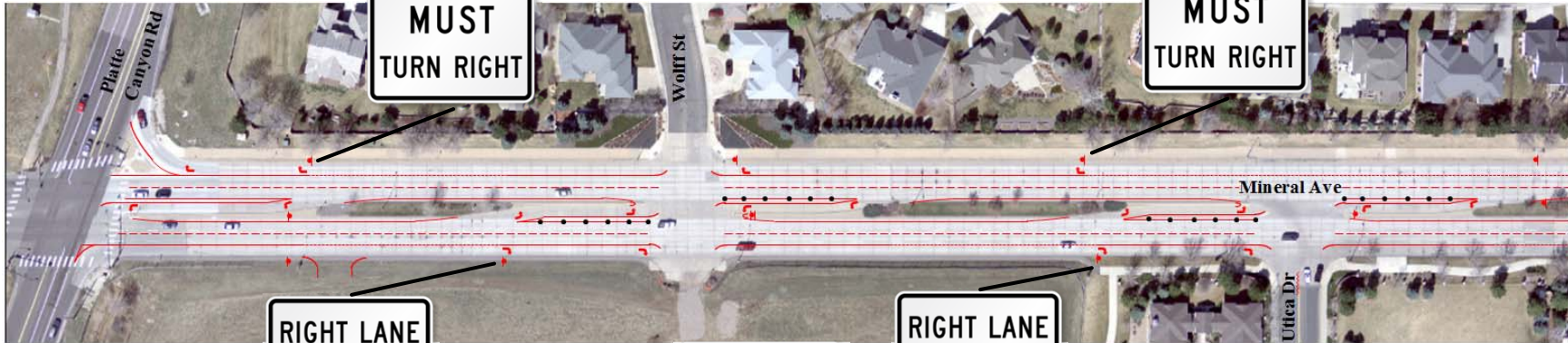
- Recommended
  - Right Turn Acceleration/Deceleration Lane
  - Lane Width Narrowing
  - Center Median Widening
  - Speed Limit Change
  - Specific U-turn Locations
  - Deter Vehicle Queues from Blocking Intersections
- Not Recommended
  - Median Nose Reduction
    - Constructability Issues
    - Cost Prohibitive

# MINERAL AVENUE MODIFICATIONS





# MINERAL AVENUE MODIFICATIONS



RIGHT LANE  
MUST  
TURN RIGHT

RIGHT LANE  
MUST  
TURN RIGHT

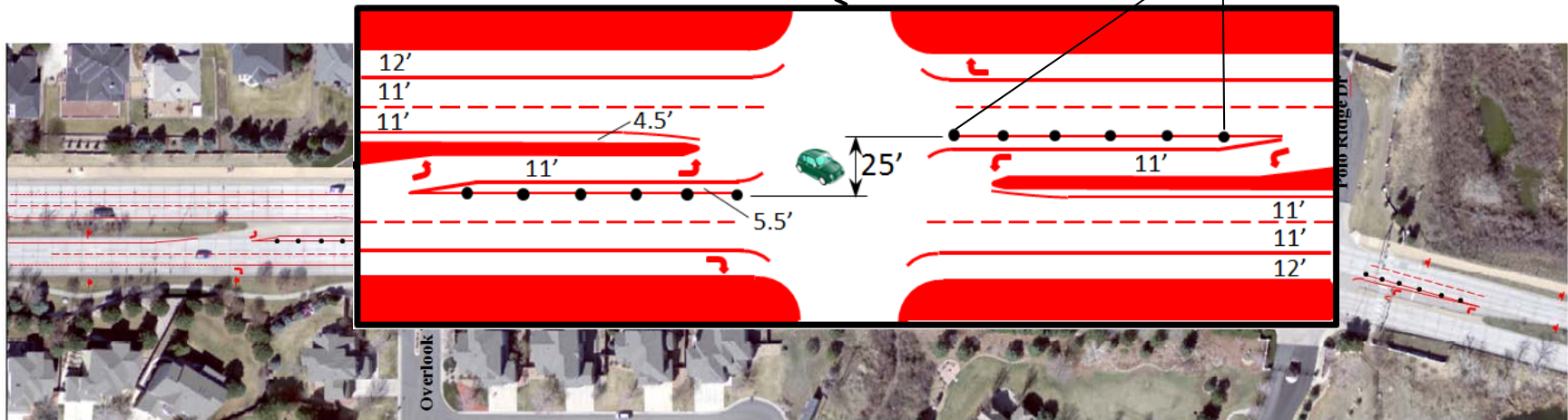
RIGHT LANE  
MUST  
TURN RIGHT

RIGHT LANE  
MUST  
TURN RIGHT

RIGHT LANE  
MUST  
TURN RIGHT



# MINERAL AVENUE MODIFICATIONS

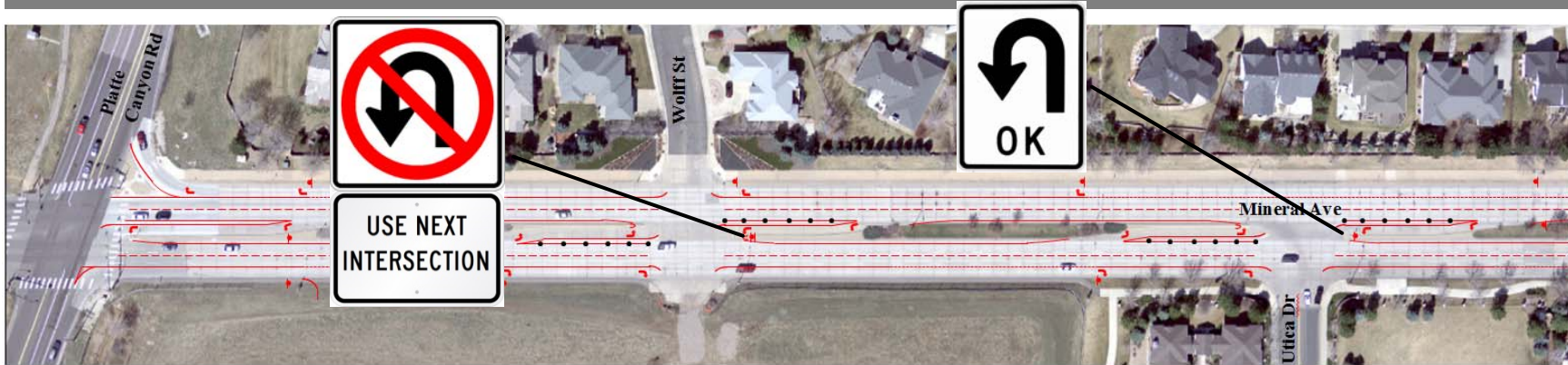


# MINERAL AVENUE MODIFICATIONS





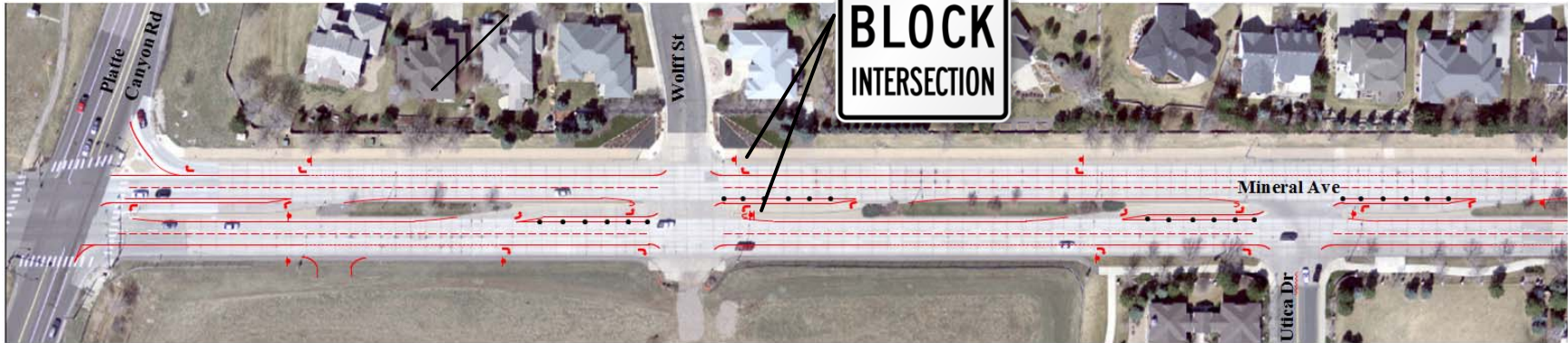
# MINERAL AVENUE MODIFICATIONS





# MINERAL AVENUE MODIFICATIONS

**DO NOT  
BLOCK  
INTERSECTION**



# PLATTE CANYON ROAD MOVEMENTS

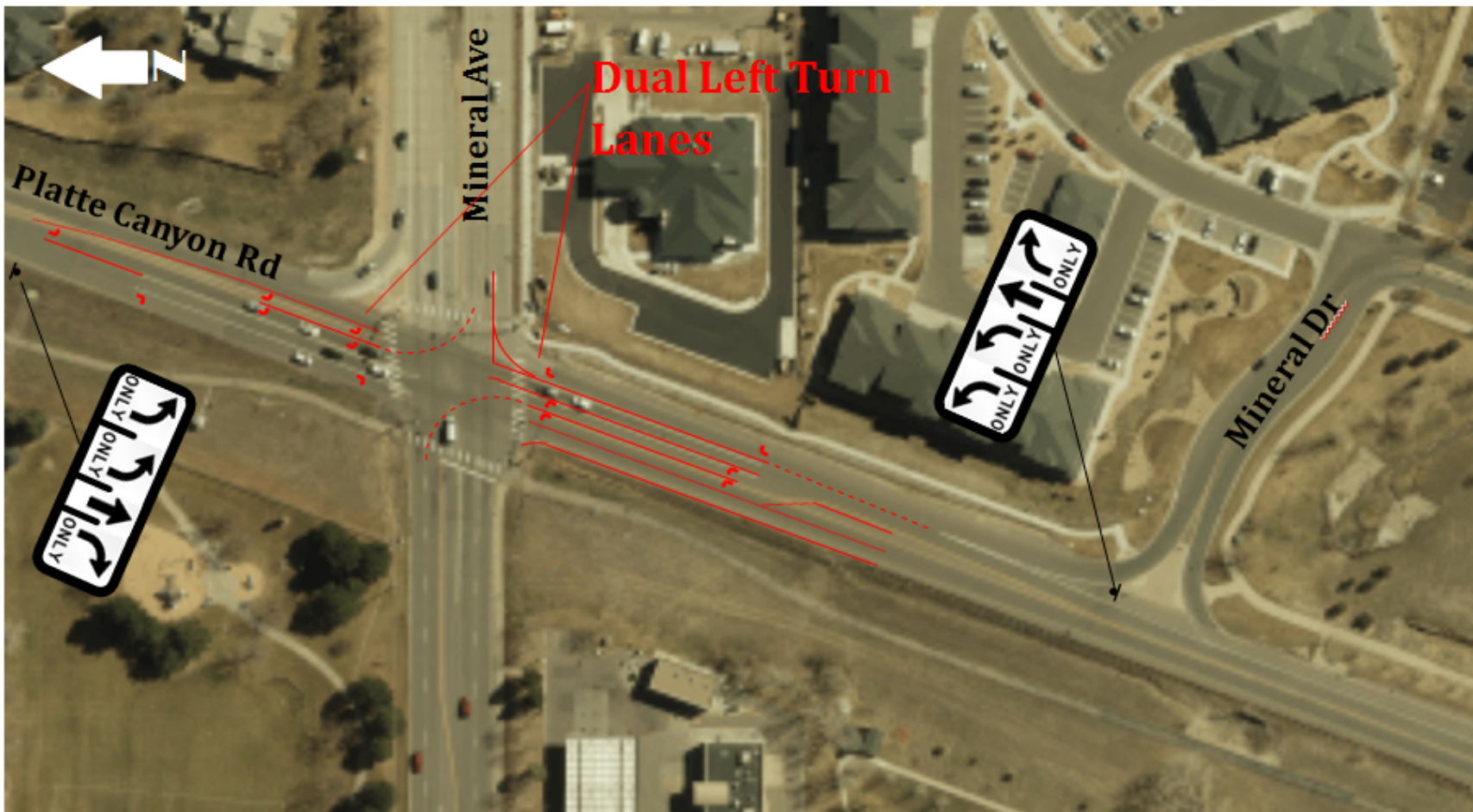
- Recommended
  - Mineral Avenue Intersection
    - Dual NB & SB Left Turn Lanes
    - Traffic Signal Modifications
    - Channelized NB Right Turn Lane
  - Mineral Drive Intersection
    - Full Movement Access
- Not Recommended
  - Meadowbrook Access to Platte Canyon Road
    - Not Supported by Residents
    - Cost Prohibitive

# PLATTE CANYON ROAD MOVEMENTS



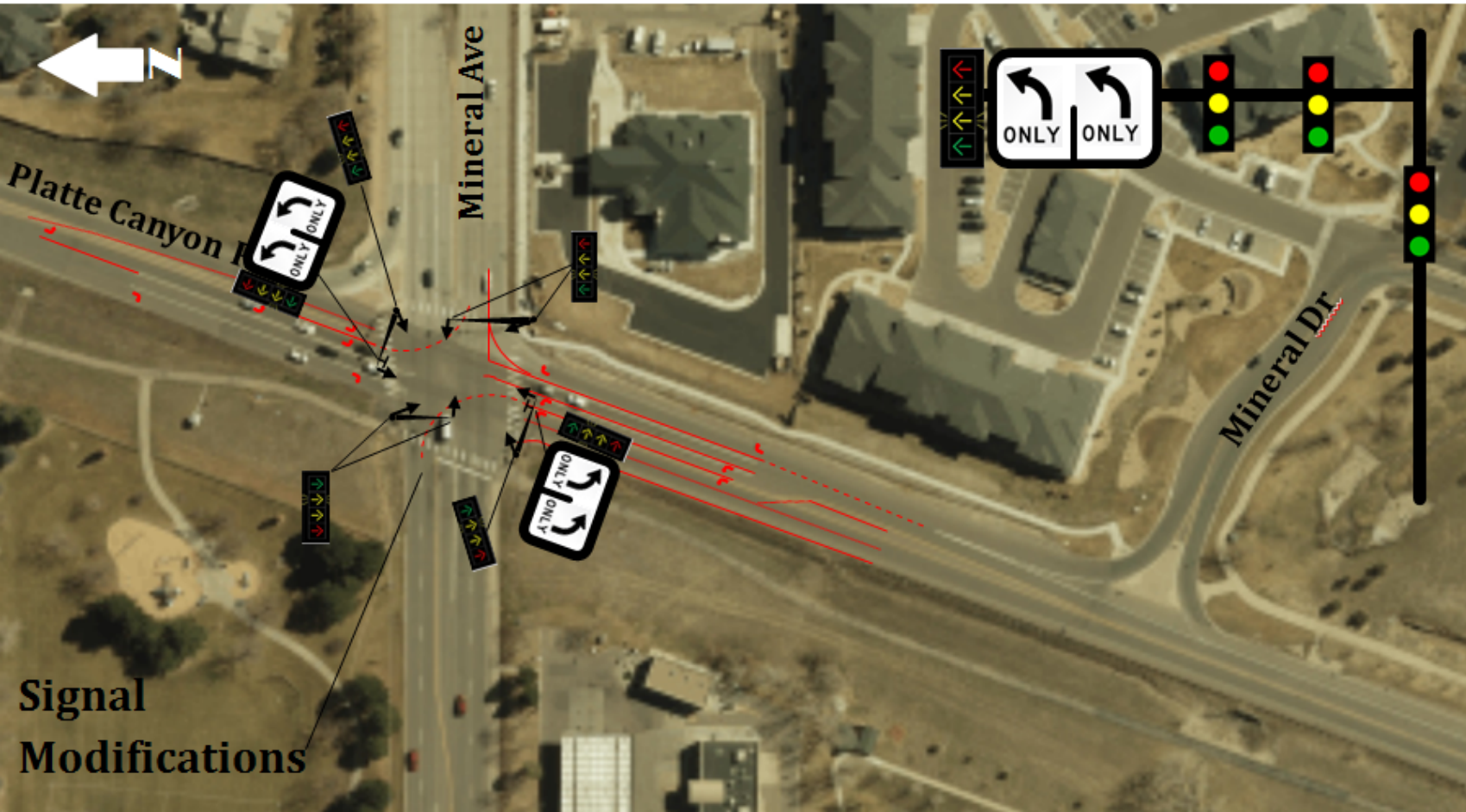


# PLATTE CANYON ROAD MOVEMENTS

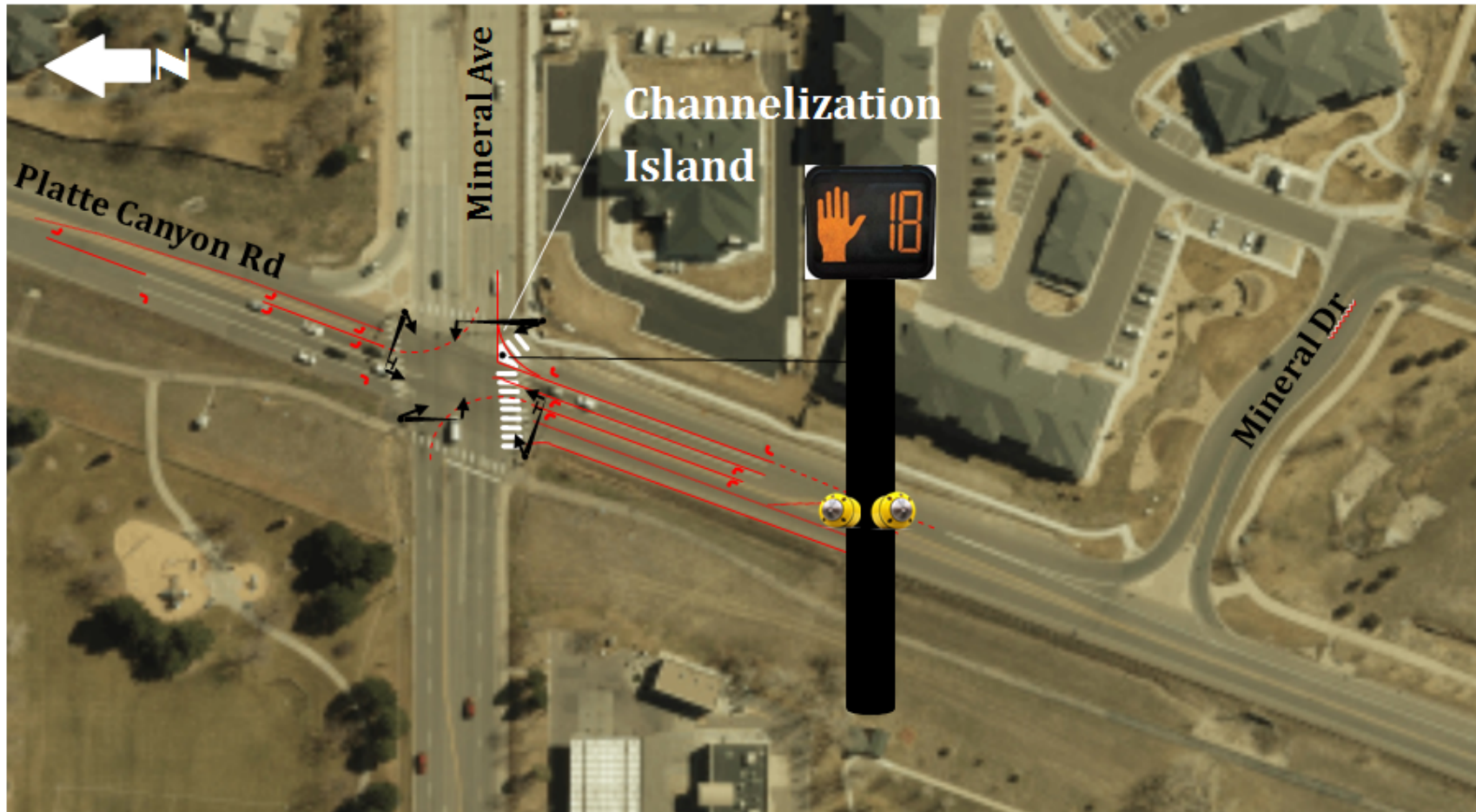




# PLATTE CANYON ROAD MOVEMENTS

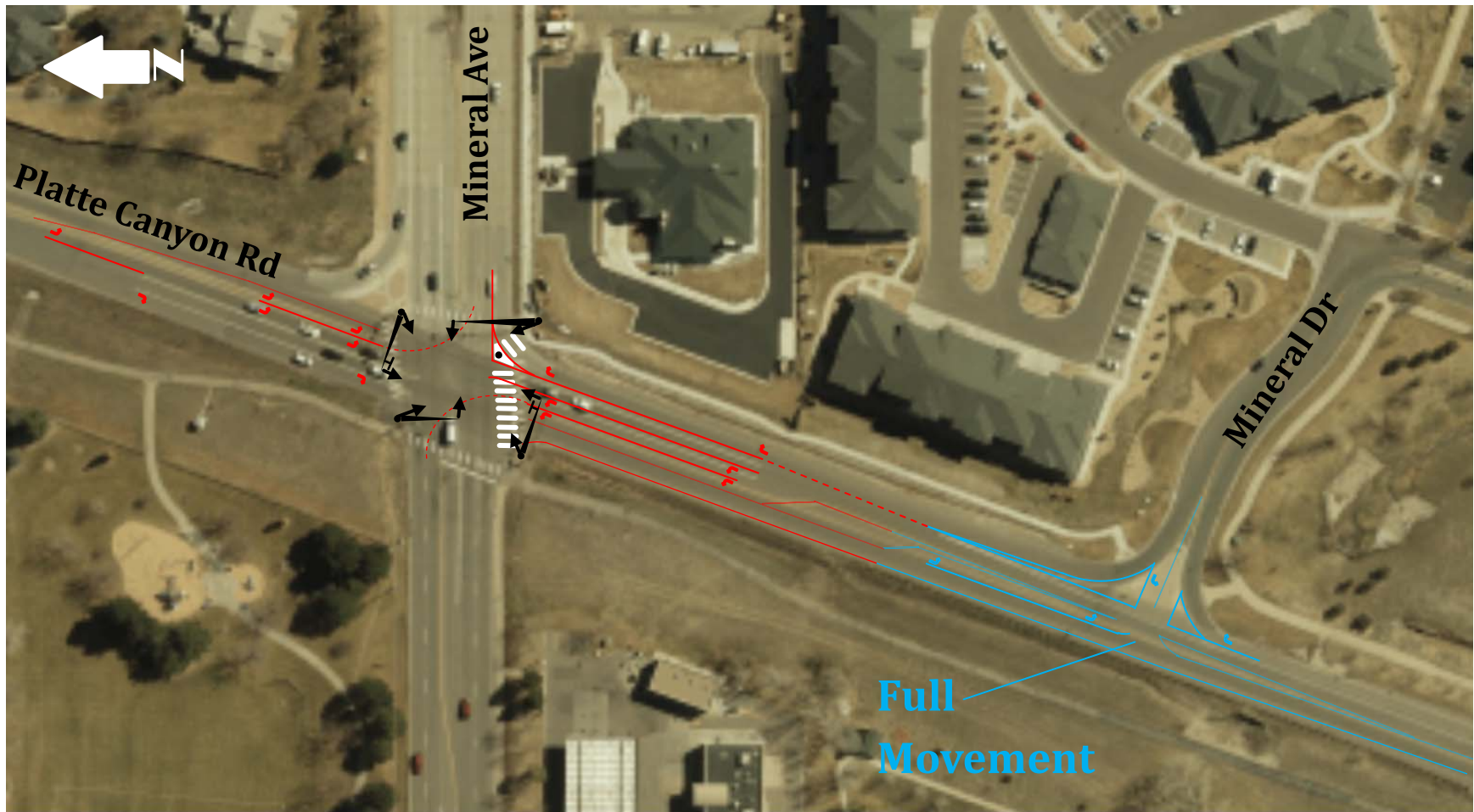


# PLATTE CANYON ROAD MOVEMENTS

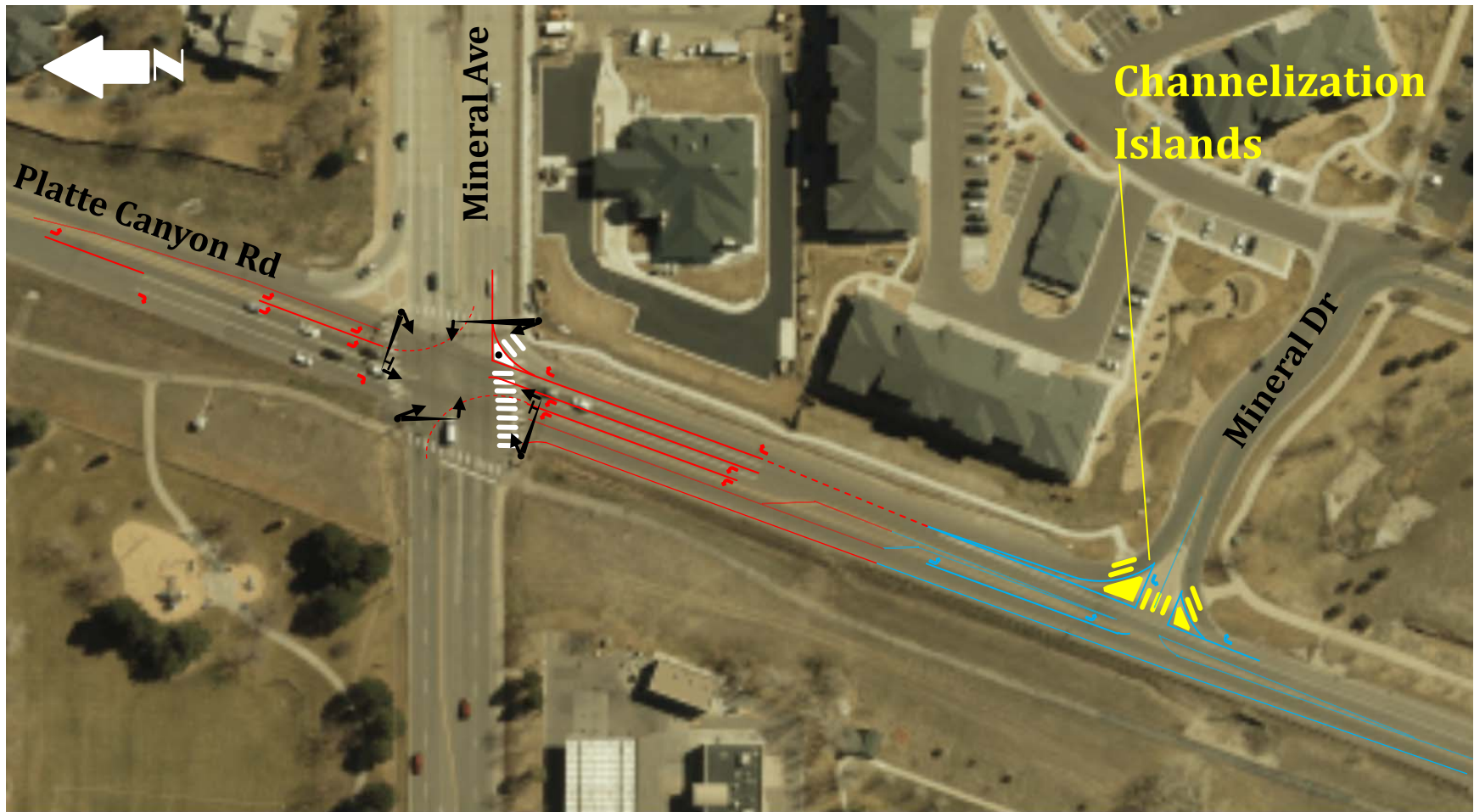




# PLATTE CANYON ROAD MOVEMENTS

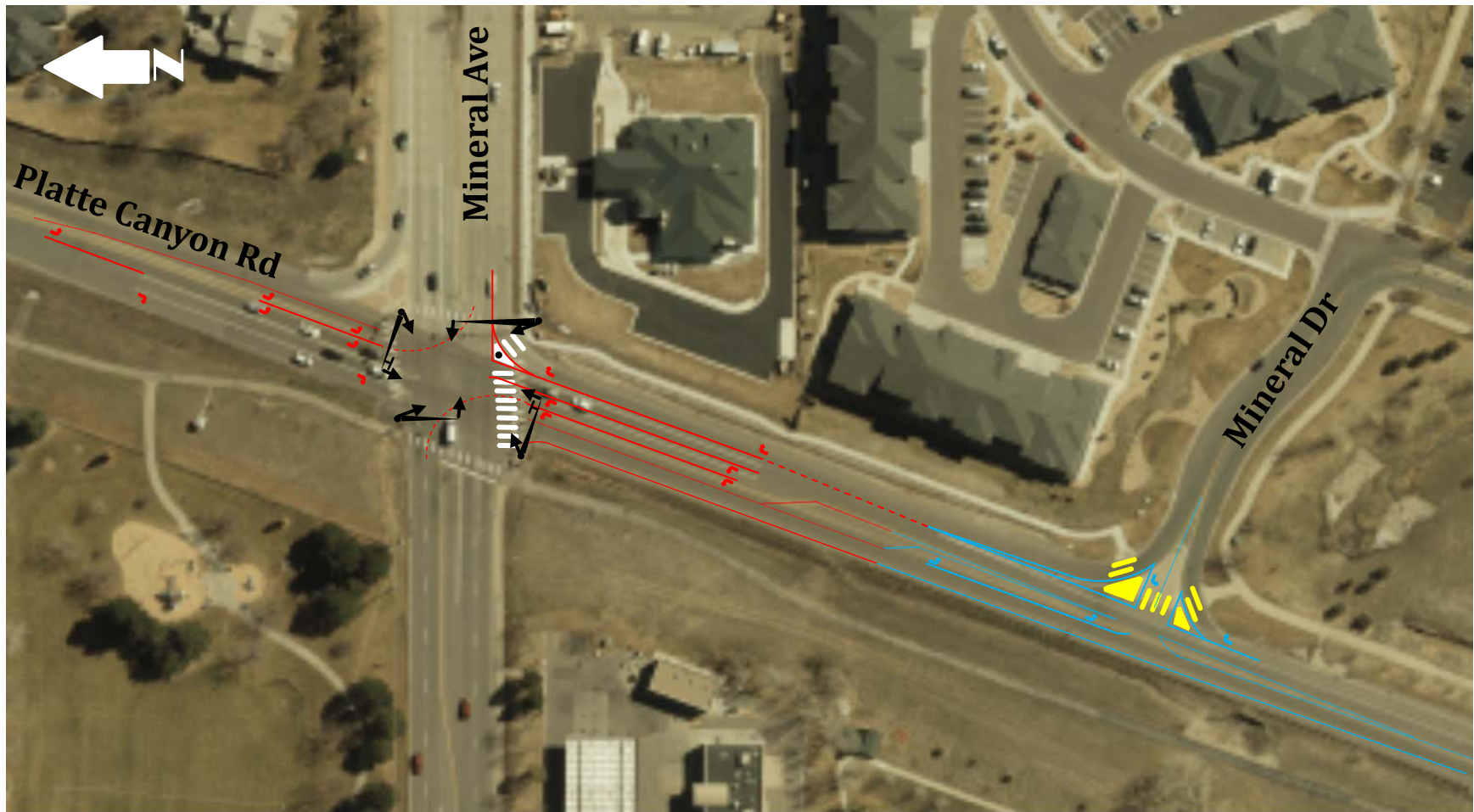


# PLATTE CANYON ROAD MOVEMENTS





# PLATTE CANYON ROAD MOVEMENTS

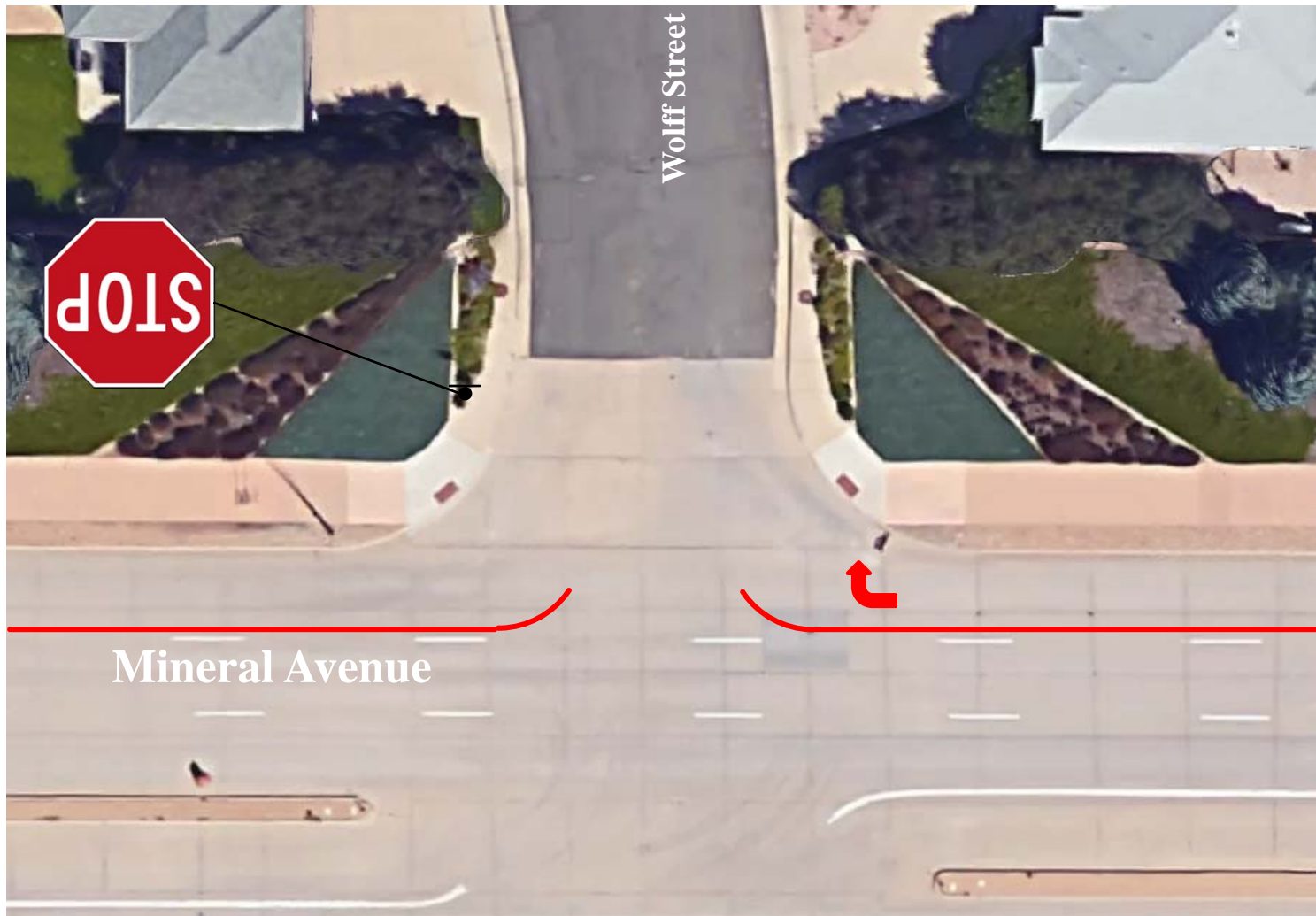




# SIDE STREET IMPROVEMENTS

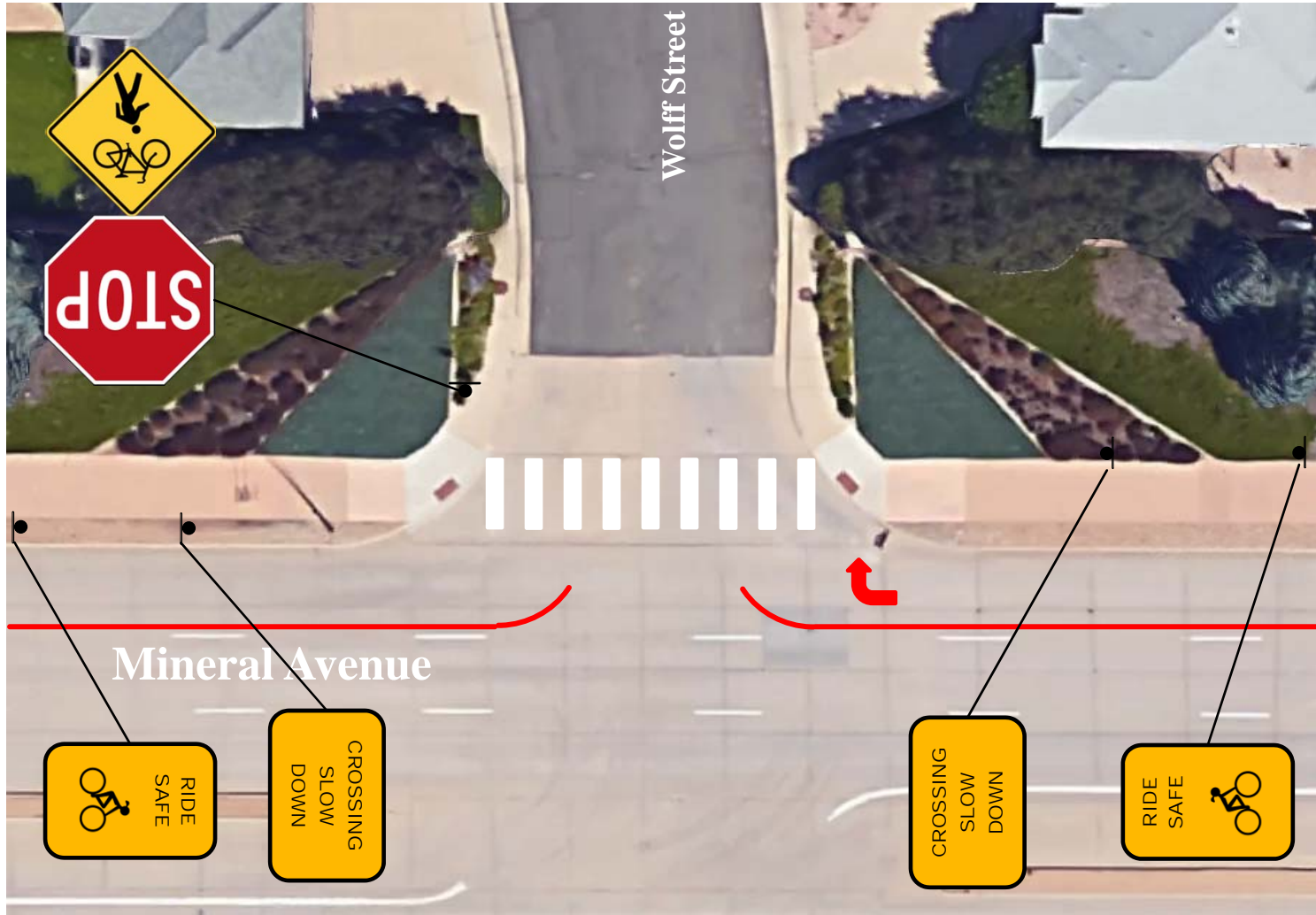
- Provisional Revisions
  - Crosswalk Striping
  - Trail Signage
  - Addition of Blank Out Signs on Polo Ridge Drive Pedestrian Signal
- Ultimate Alterations
  - Curb Extensions
  - Raised Crosswalk
  - Additional Landscaping

# SIDE STREET IMPROVEMENTS

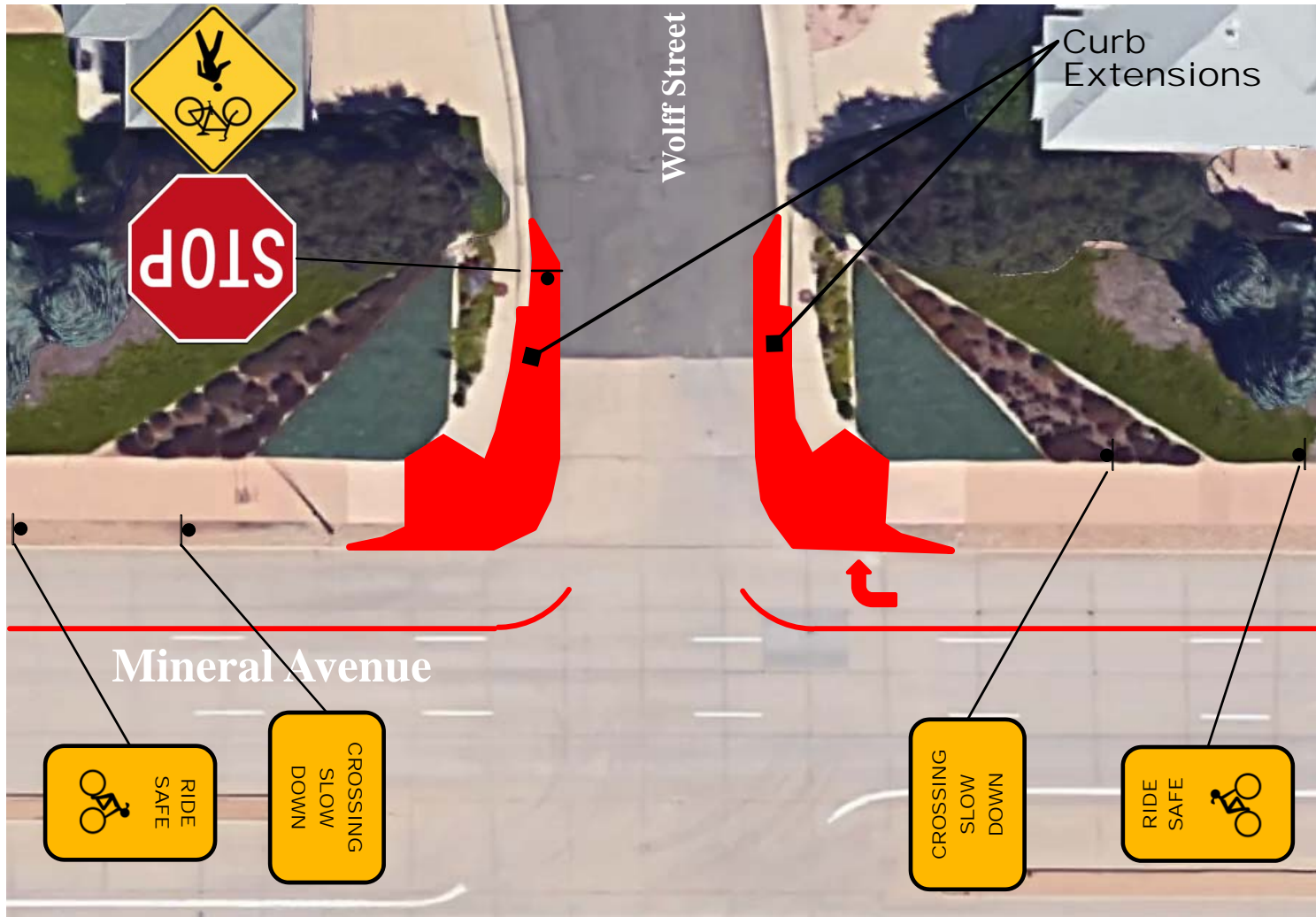




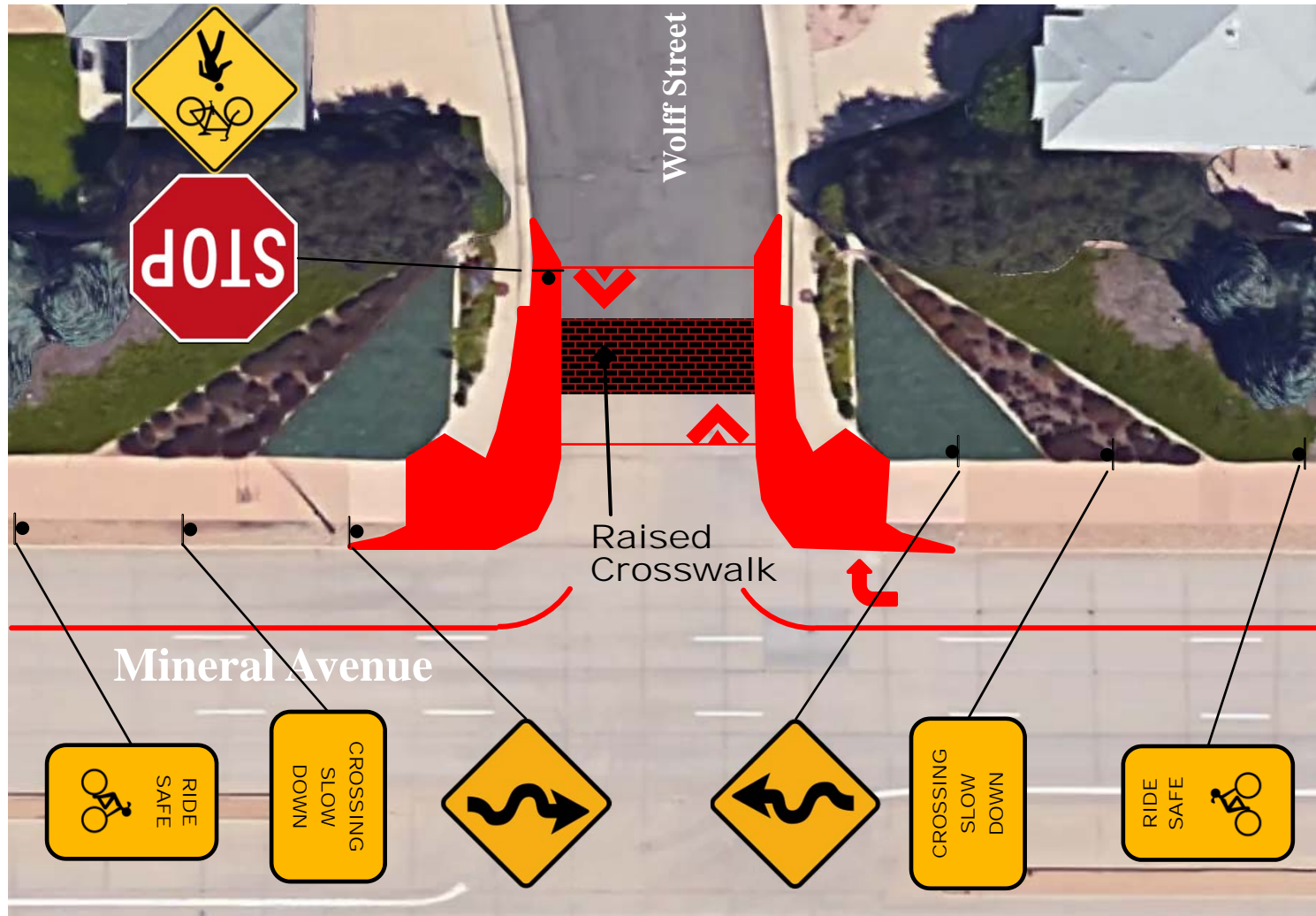
# WOLFF STREET – PROVISIONAL



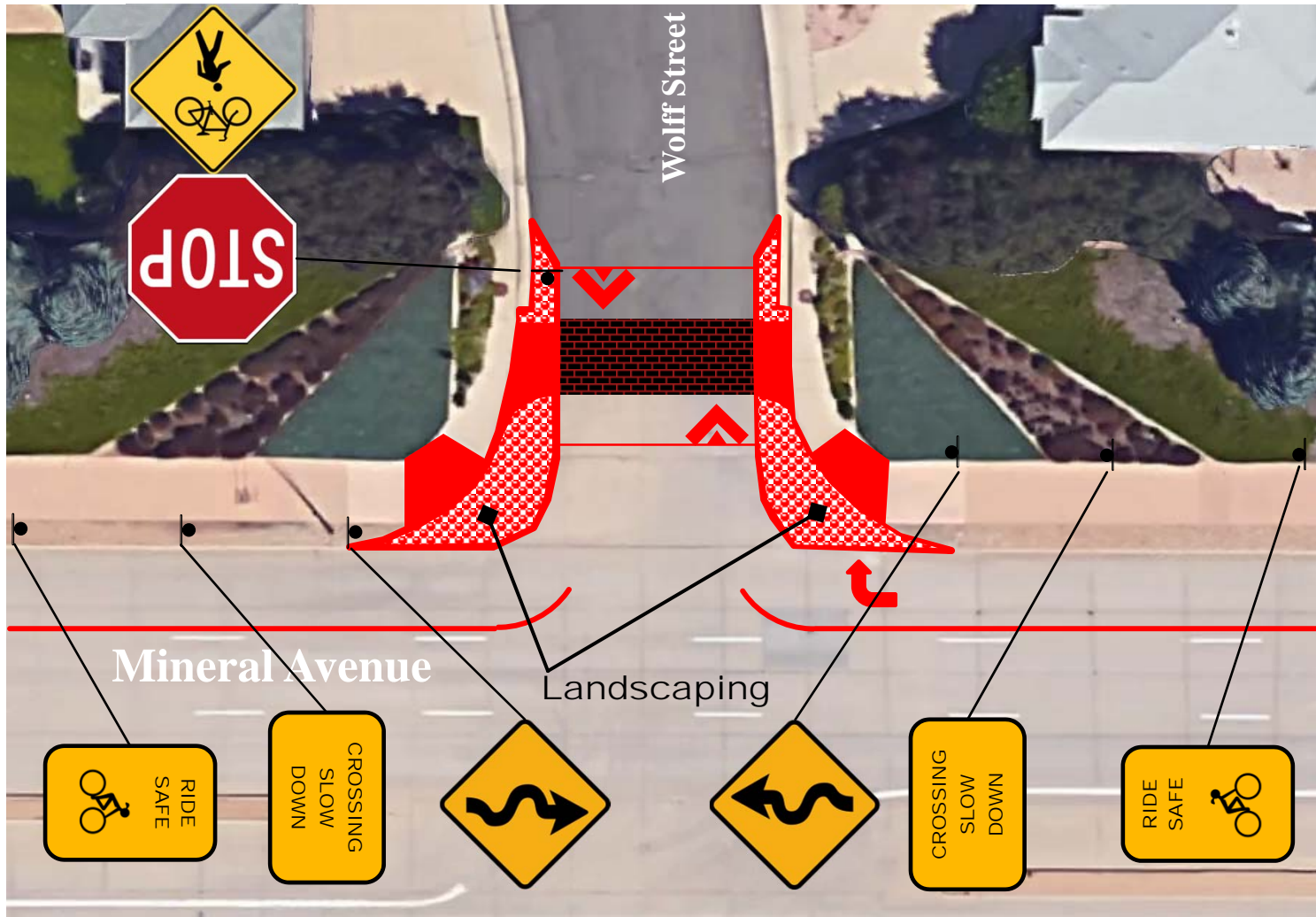
# WOLFF STREET – ULTIMATE



# WOLFF STREET – ULTIMATE

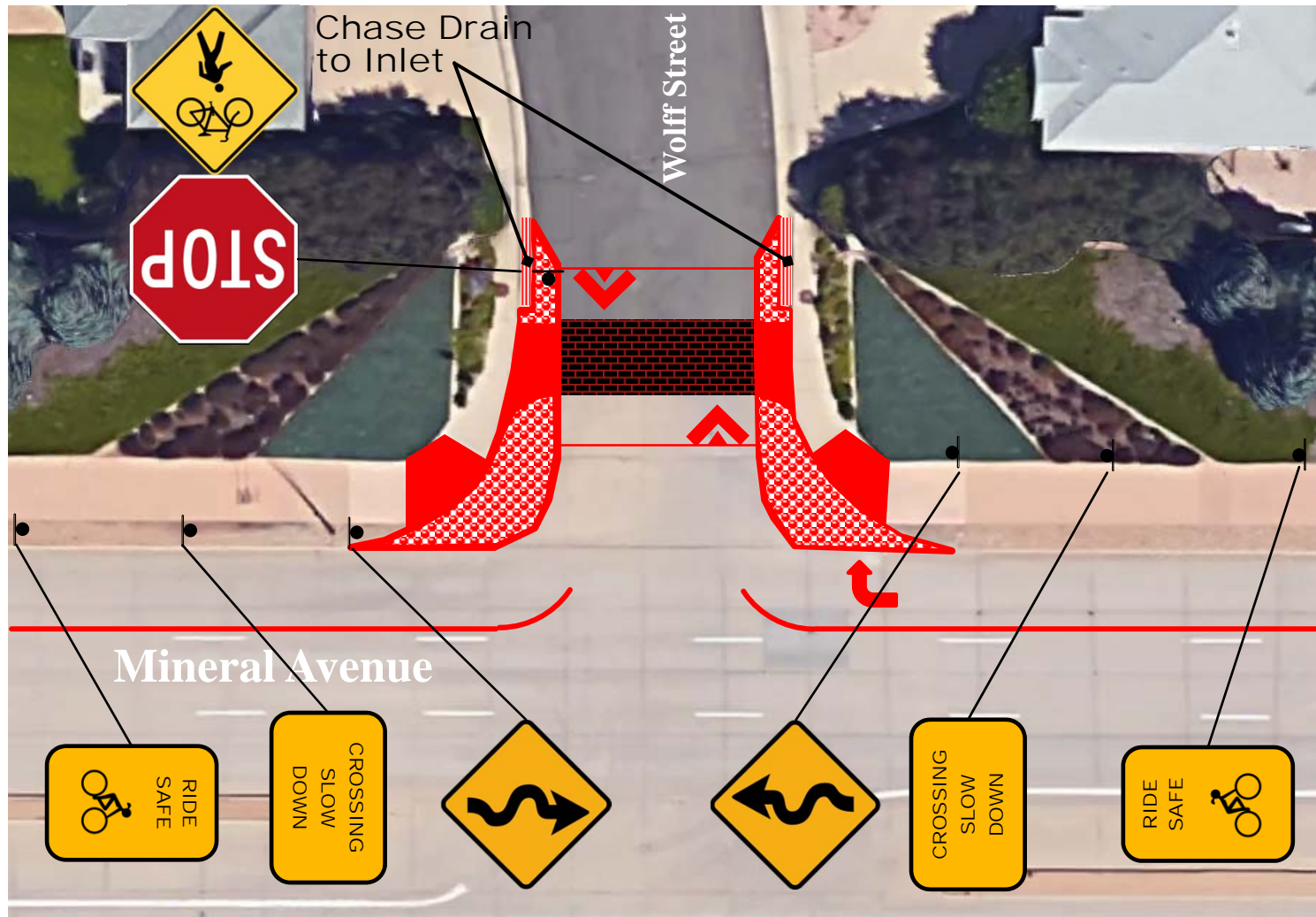


# WOLFF STREET – ULTIMATE

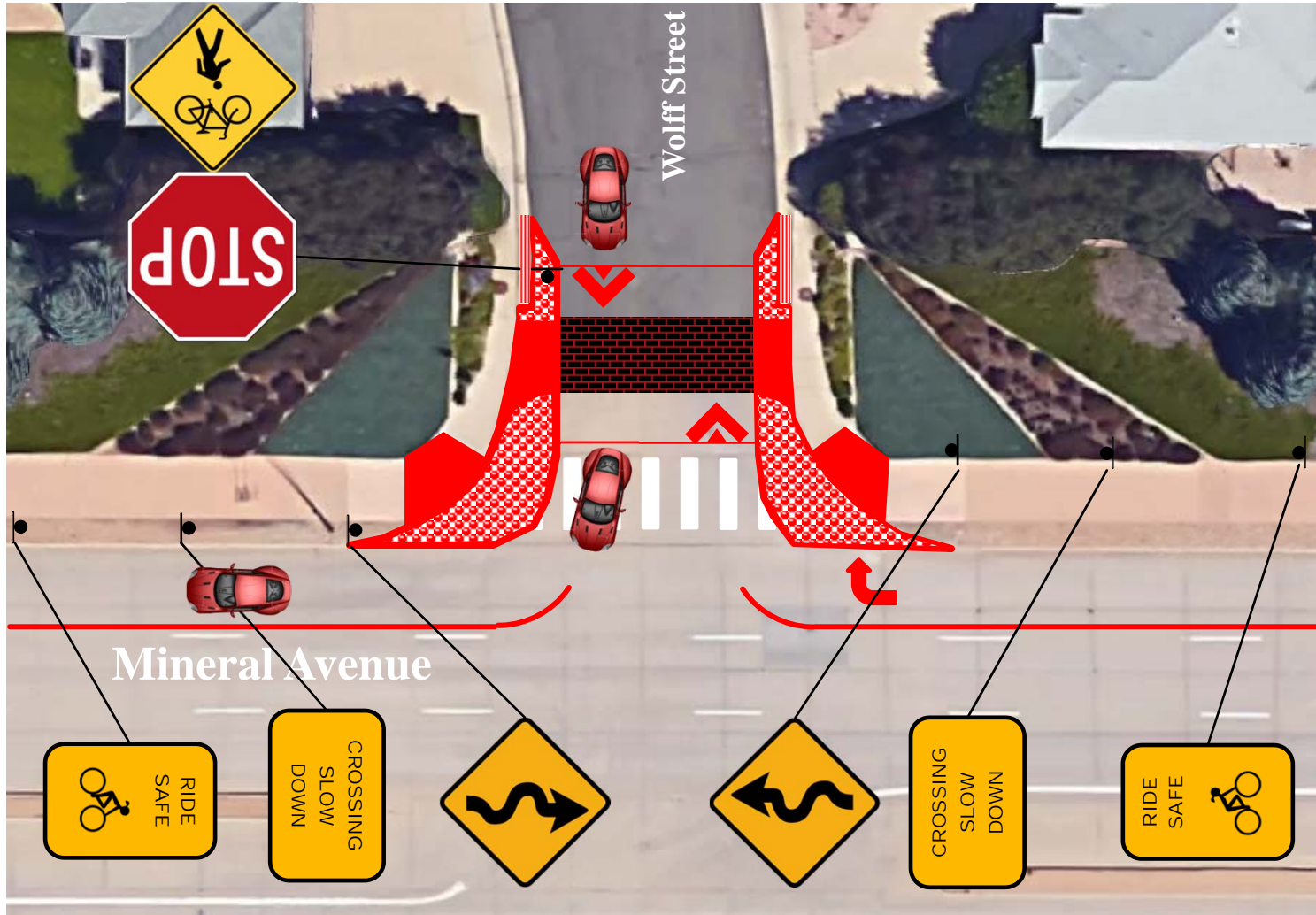




# WOLFF STREET – ULTIMATE



# WOLFF STREET – ULTIMATE

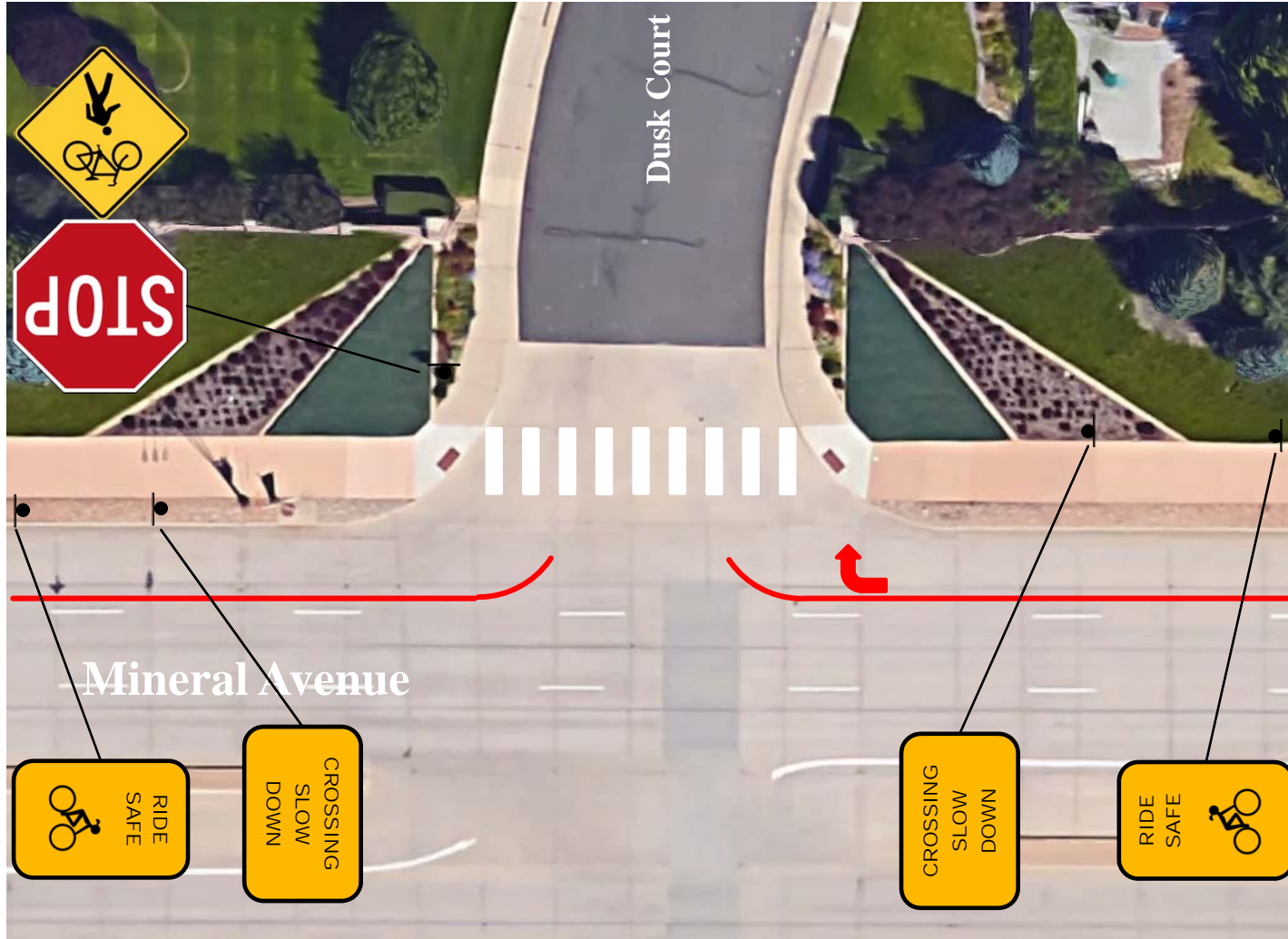




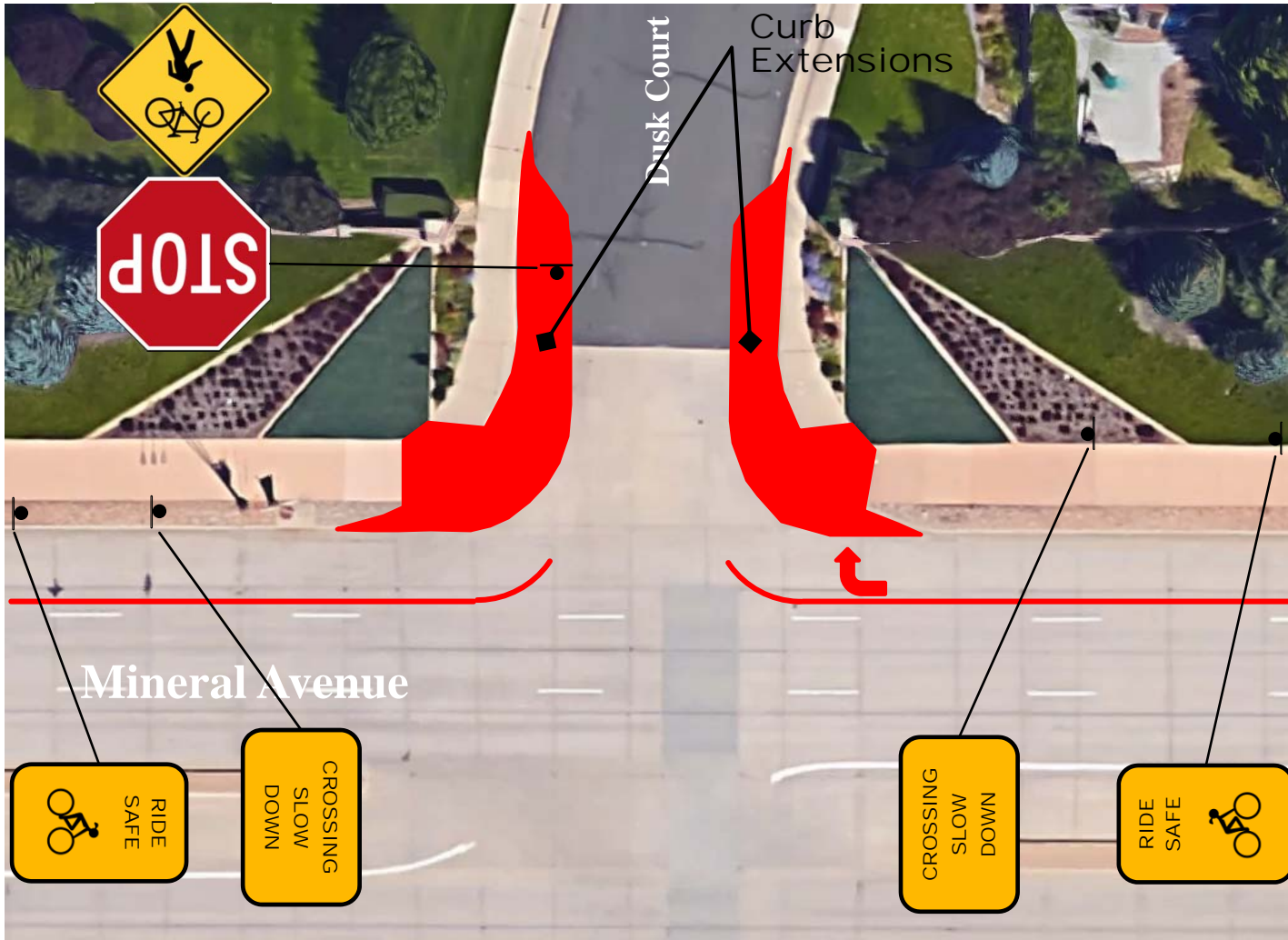
# SIDE STREET IMPROVEMENTS



# DUSK COURT – PROVISIONAL

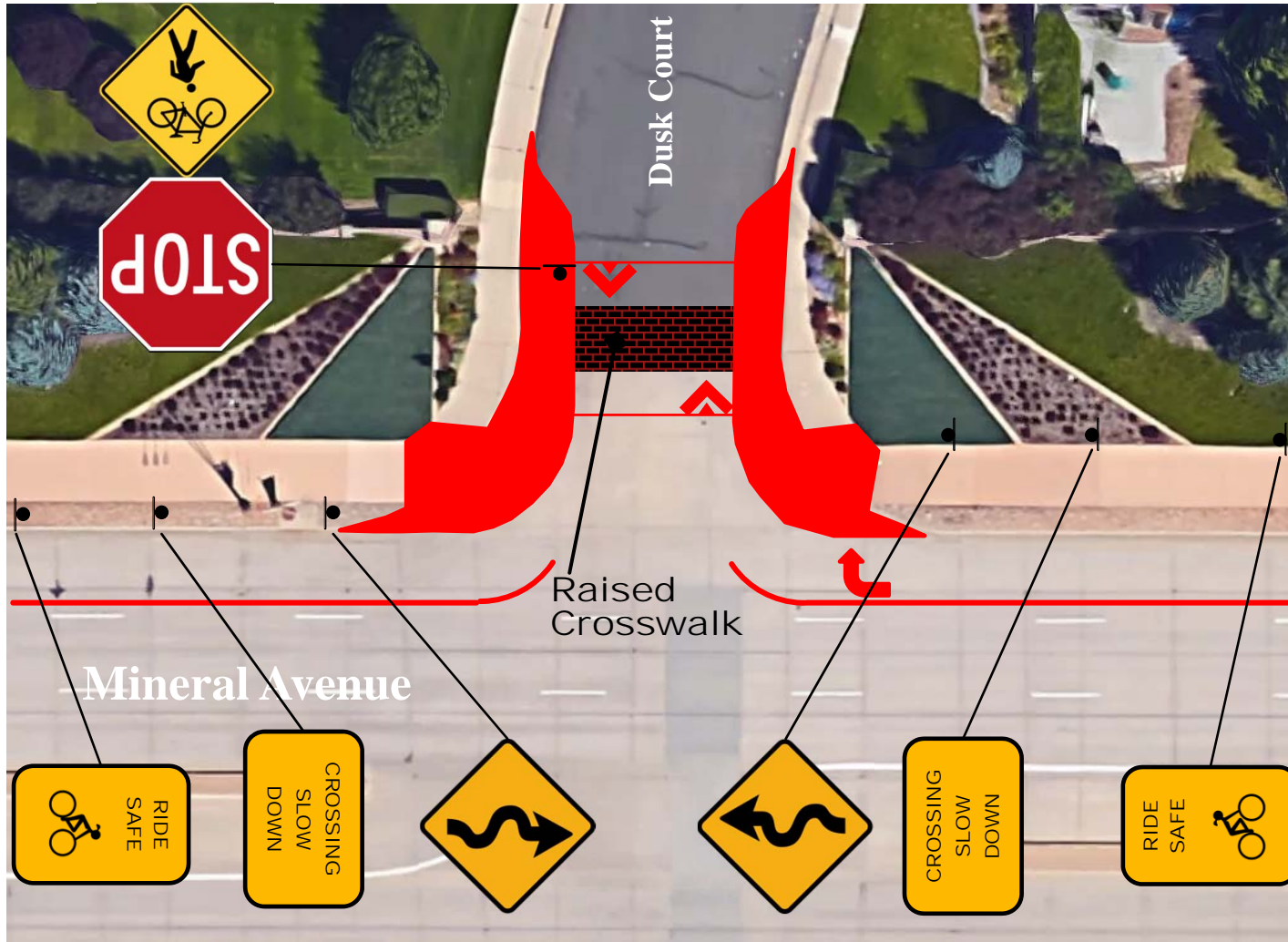


# DUSK COURT – ULTIMATE



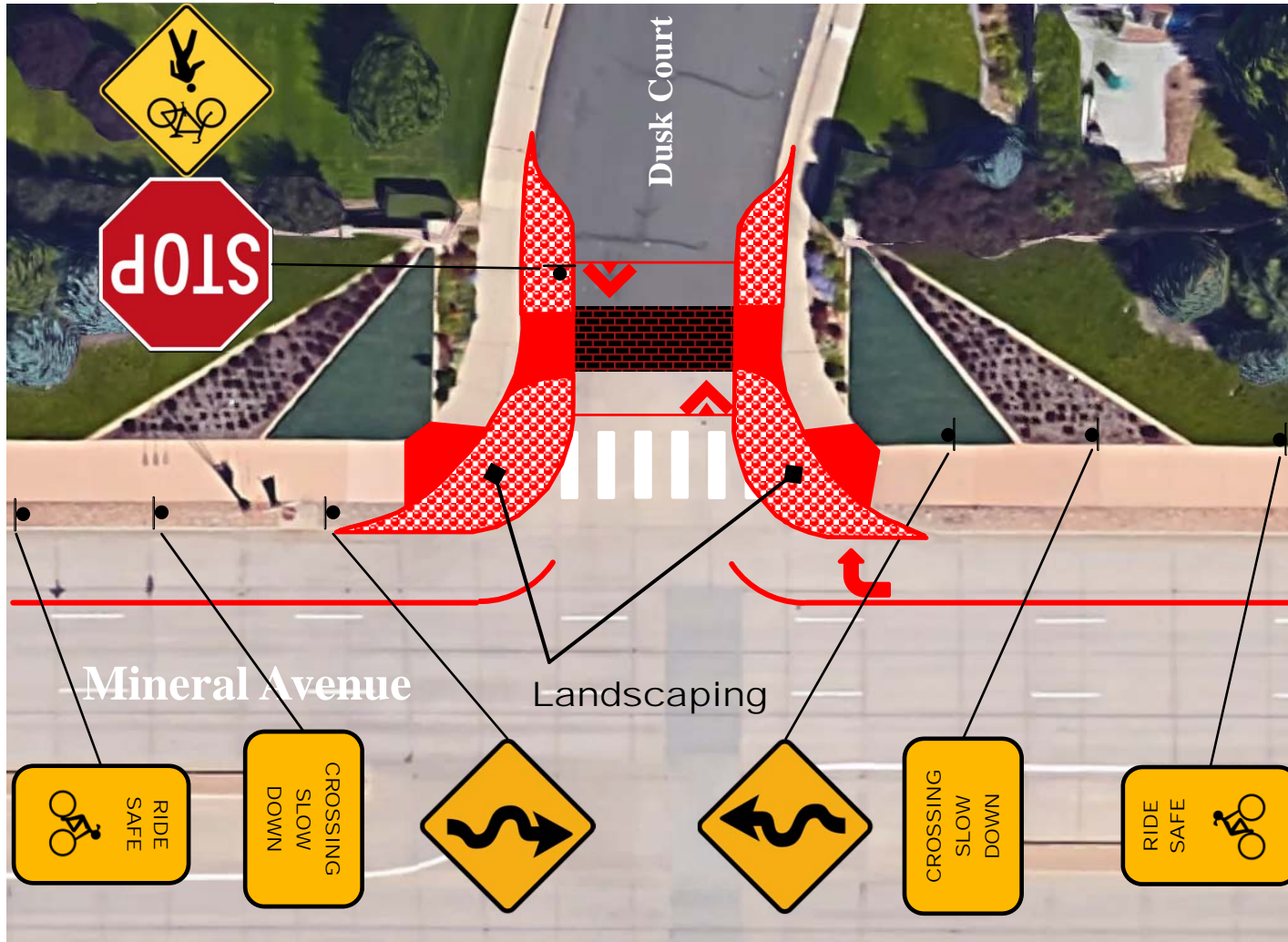


# DUSK COURT – ULTIMATE

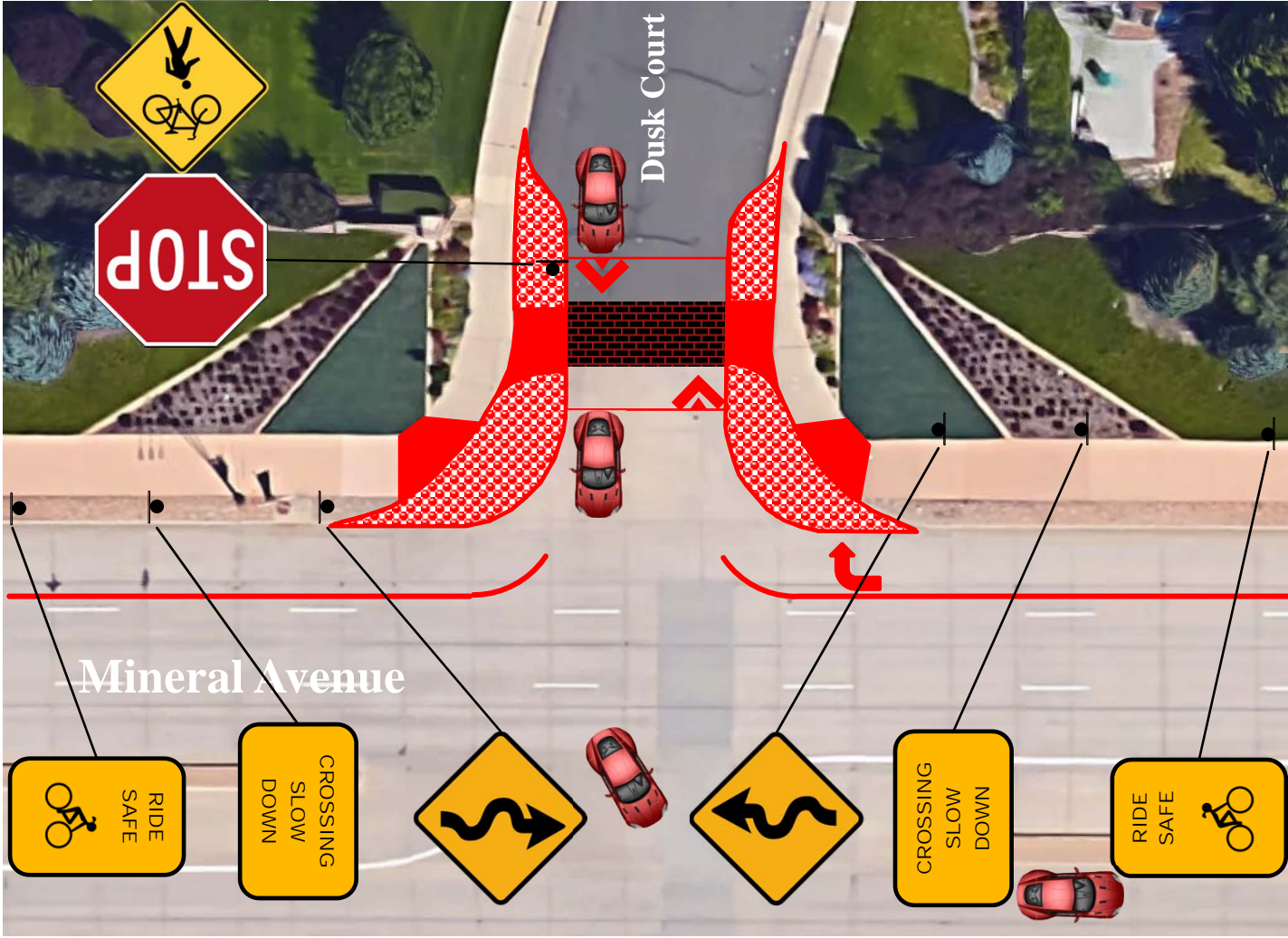




# DUSK COURT – ULTIMATE



# DUSK COURT – ULTIMATE

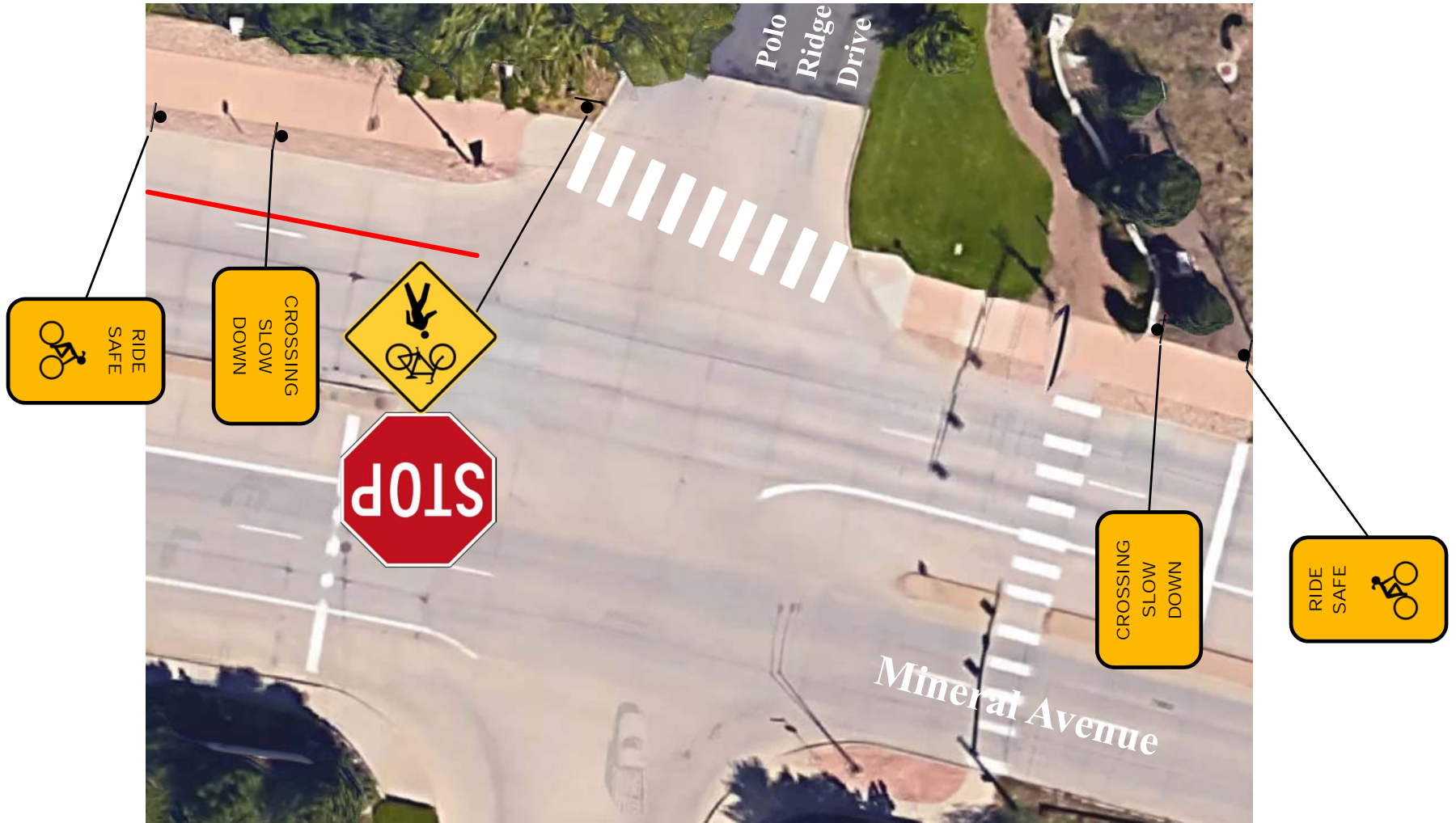


# SIDE STREET IMPROVEMENTS



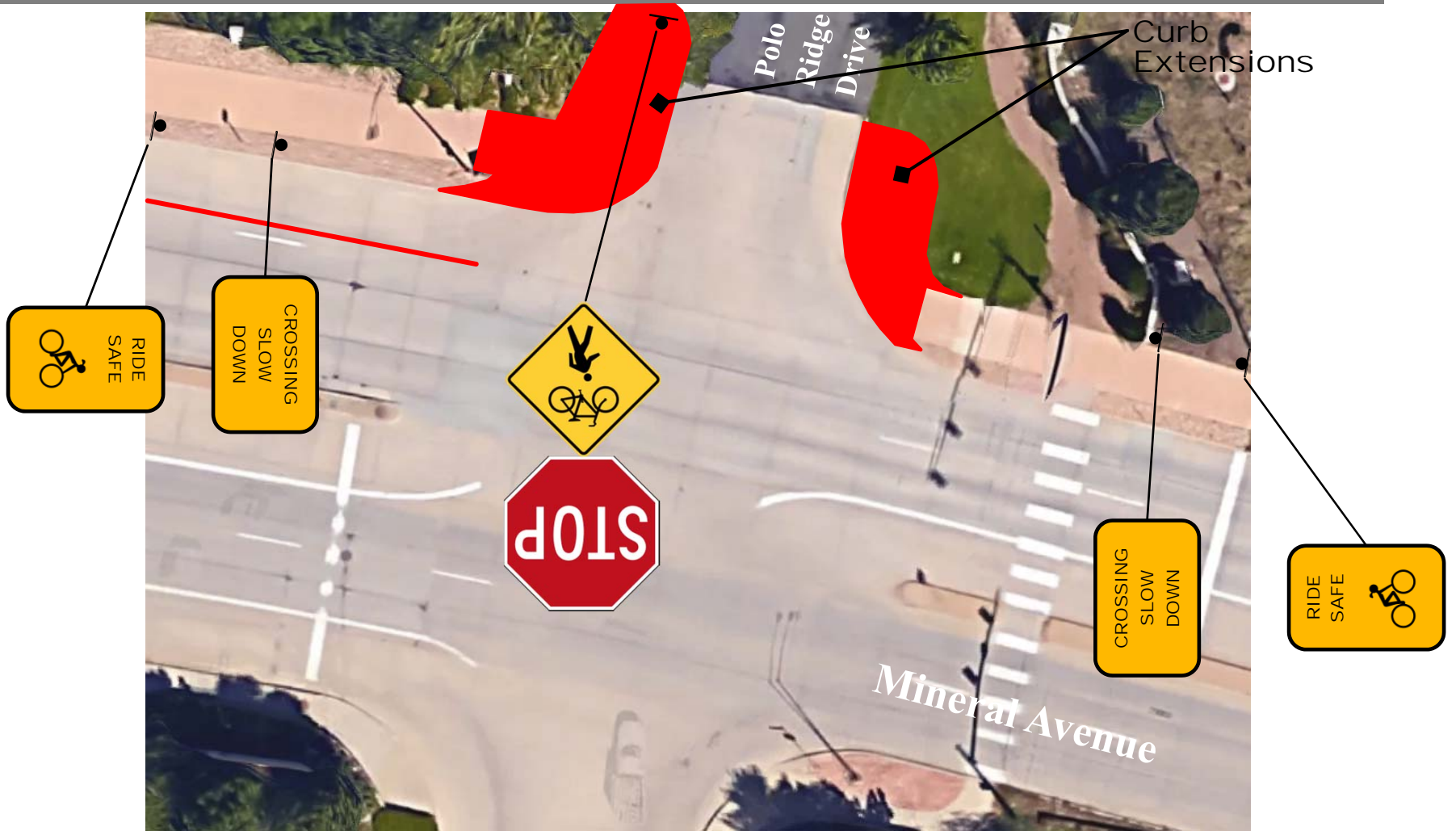


# POLO RIDGE DRIVE – PROVISIONAL

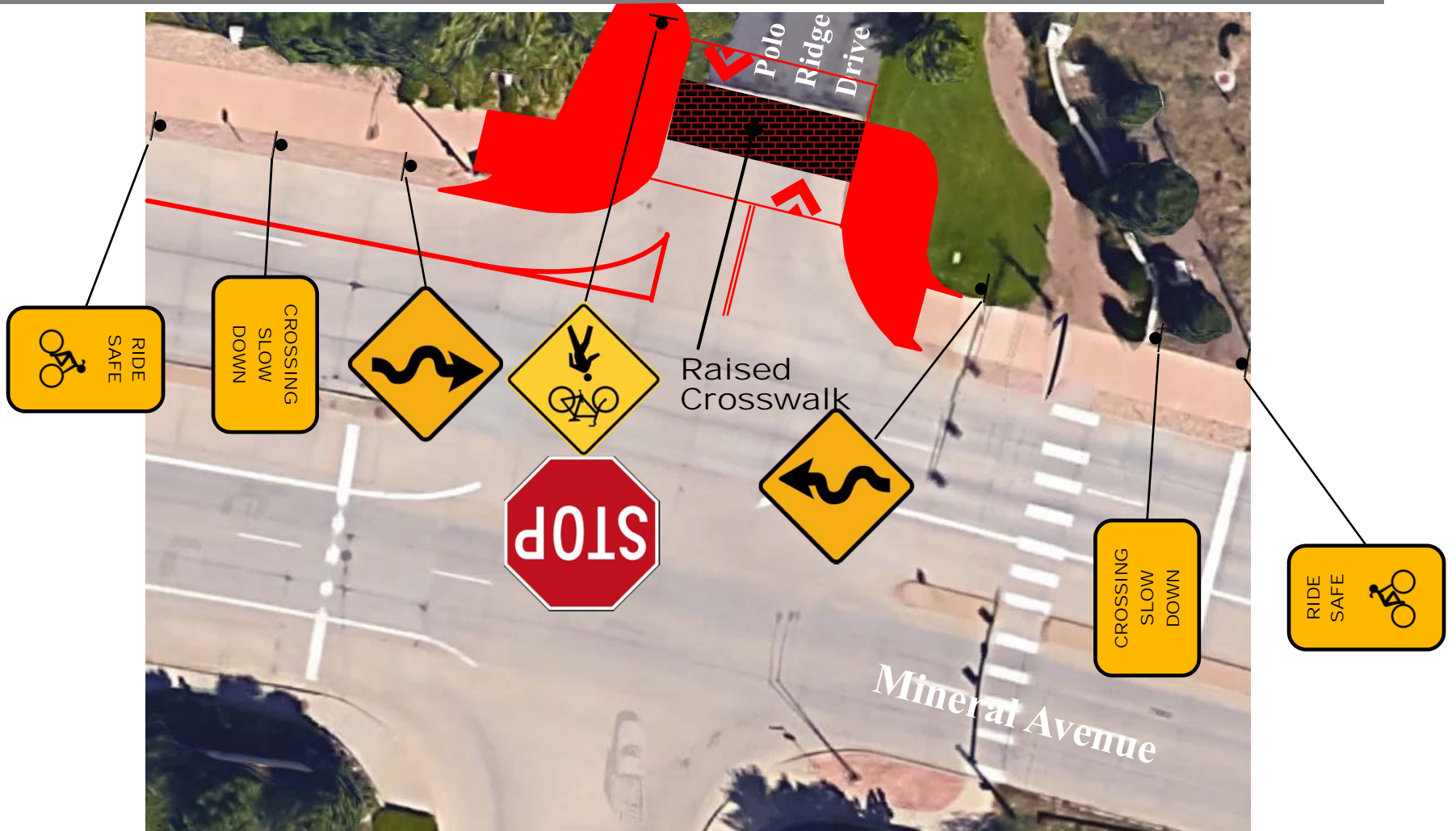




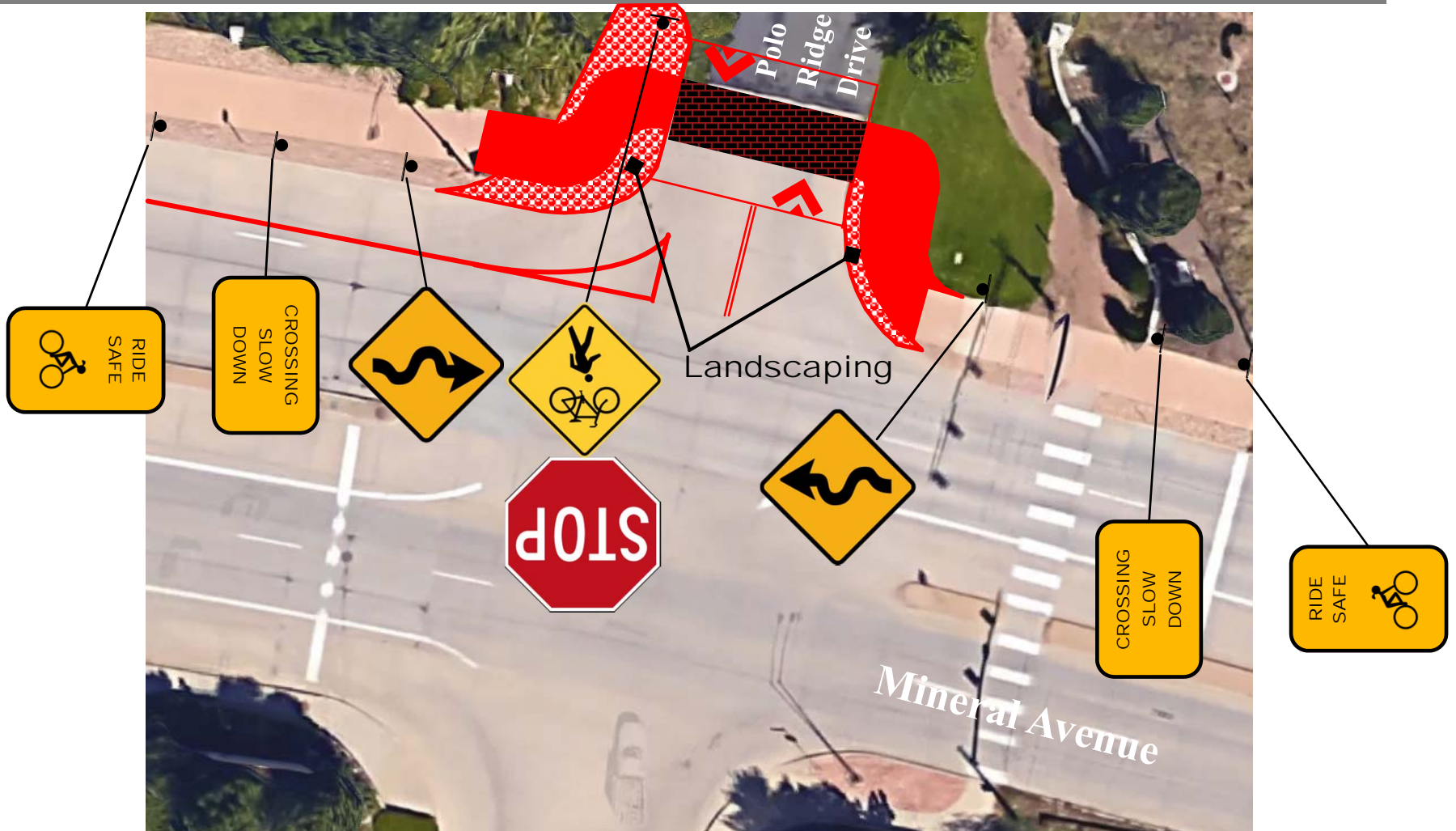
# POLO RIDGE DRIVE – ULTIMATE



# POLO RIDGE DRIVE – ULTIMATE

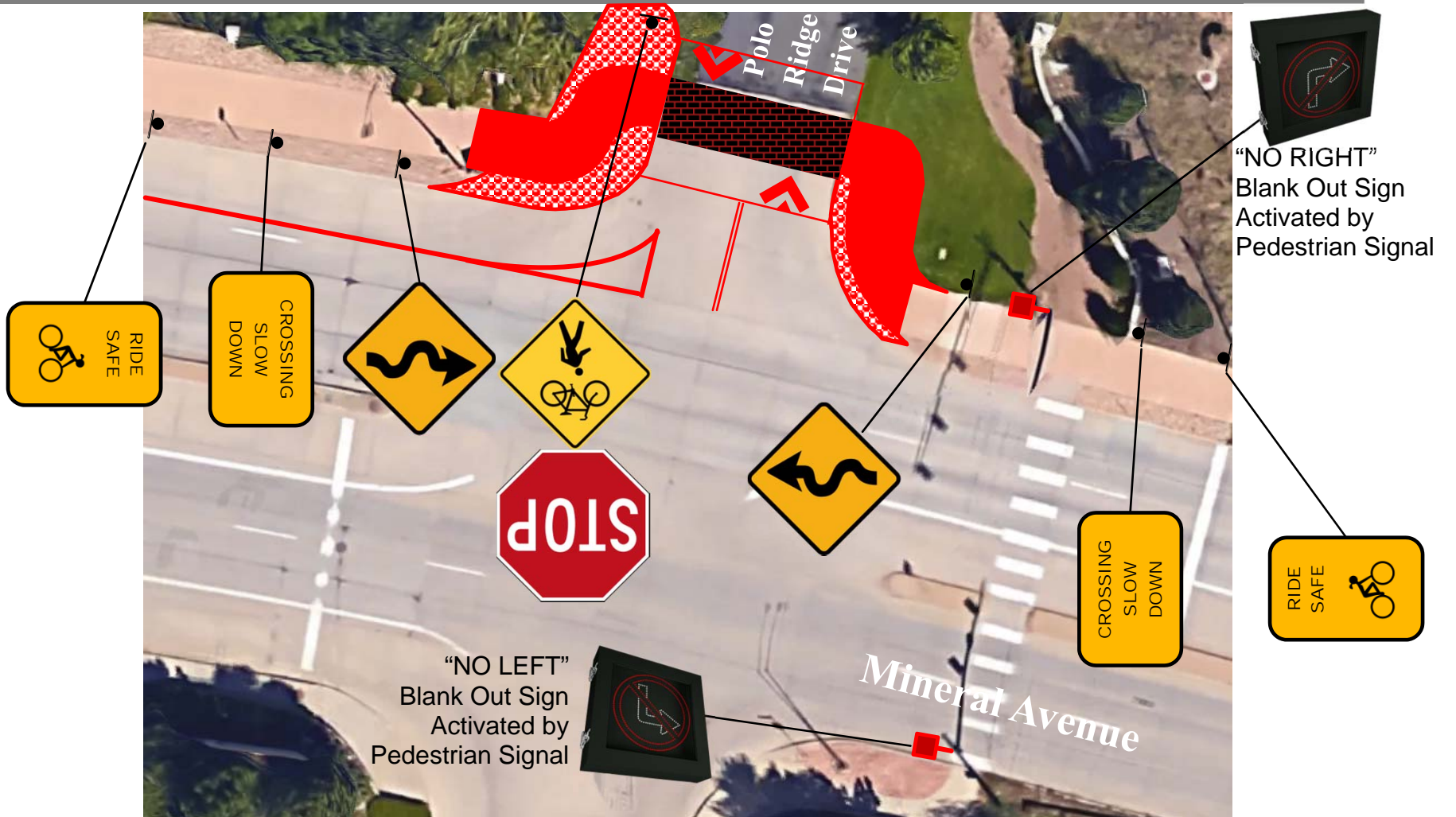


# POLO RIDGE DRIVE – ULTIMATE



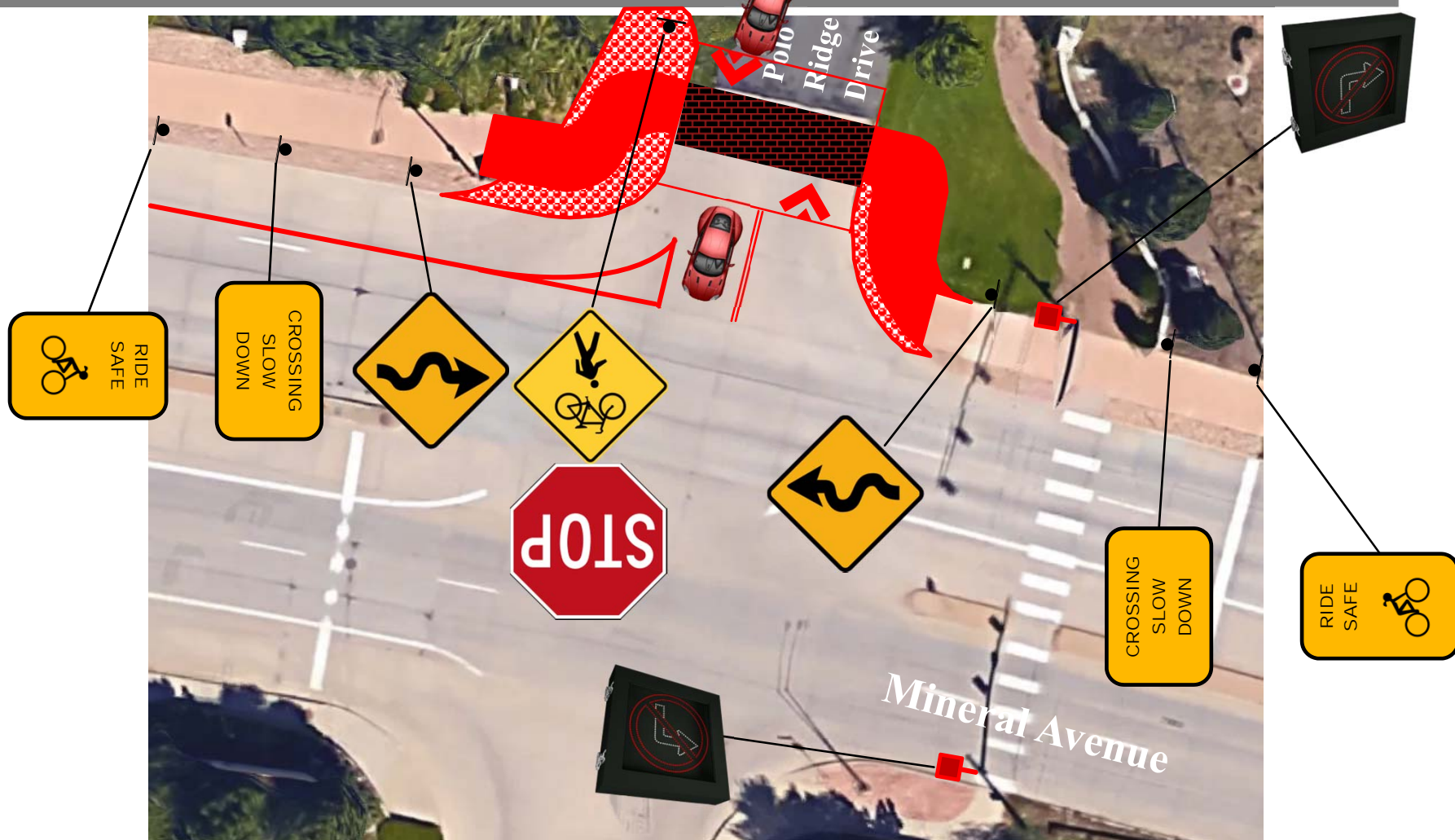


# POLO RIDGE DRIVE – ULTIMATE





# POLO RIDGE DRIVE – ULTIMATE





# PHASING PLAN

- Phase 1 – Hopefully This Year (2016)
- Phase 2 – Maybe Next Year (2017?)
- Phase 3 – Future (2018?)

# PHASING PLAN – PHASE I

- Improvements
  - Side Street Provisional Improvements – Crosswalks, Trail Signage & Blank Out Signs
  - Mineral Avenue Lane Reassignments
- Requirements
  - City Council Approval
  - Funding Identification
  - Locates
- Construction Services
  - Paint Contractor – Grind off existing paint and add new pavement markings
  - Signal Contractor – Install blank out signs
  - City – Crosswalk paint and signs

# PHASING PLAN – PHASE 2

- Improvements
  - Platte Canyon Road/Mineral Avenue Intersection
- Requirements
  - CDOT Approval
  - City Council Approval
  - Funding Identification
- Construction Services
  - Consultant – Conduct survey and prepare final design plans
  - General Contractor – Concrete median installation
  - Paint Contractor – Grind off existing markings and add new pavement markings
  - Signal Contractor – Traffic signal modifications
  - City – Signs



# PHASING PLAN – PHASE 3

- Improvements
  - Platte Canyon Road/Mineral Drive Intersection
  - Side Street Ultimate Improvements – Raised Crosswalks, Curb Extensions & Landscaping
- Requirements
  - CDOT Approval
  - City Council Approval
  - Funding Identification
  - Locates
- Construction Services
  - Consultant – Conduct survey and prepare final design plans
  - General Contractor – Concrete median removal and installation
  - Paint Contractor – Grind off existing markings and add new pavement markings
  - Landscaper – Plant new vegetation
  - City – Signs

# COST ESTIMATING

Phase	Project	Improvements	Cost
1A	Side Street Provisional Improvements	<ul style="list-style-type: none"> <li>▪ Crosswalk Striping</li> <li>▪ Trail Signage</li> <li>▪ Blank Out Signs on Polo Ridge Drive Pedestrian Signal</li> </ul>	\$11,000
1B	Mineral Avenue Lane Reassignment	<ul style="list-style-type: none"> <li>▪ Right Turn Acceleration/Deceleration Lane</li> <li>▪ Lane Width Narrowing</li> <li>▪ Center Median Widening</li> <li>▪ Speed Limit Change</li> <li>▪ Specific U-turn Locations</li> <li>▪ Deter Vehicle Queues from Blocking Intersections</li> </ul>	\$35,000
2A	Platte Canyon Road/Mineral Avenue Intersection	<ul style="list-style-type: none"> <li>▪ Dual NB &amp; SB Left Turn Lanes</li> <li>▪ Traffic Signal Modifications</li> <li>▪ Channelized NB Right Turn Lane</li> </ul>	\$92,000
3A	Platte Canyon Road/Mineral Drive Intersection	<ul style="list-style-type: none"> <li>▪ Full Movement Access</li> </ul>	\$107,000
3B	Side Street Ultimate Improvements	<ul style="list-style-type: none"> <li>▪ Curb Extensions</li> <li>▪ Raised Crosswalk</li> <li>▪ Additional Landscaping</li> </ul>	\$246,000
<b>Total</b>			<b>\$491,000</b>

# PROCESS MOVING FORWARD

- Continue to Seek CDOT Approval
- Prepare Study Report
- Present Staff Recommendations to City Council
  - Fully Support
  - Partially Support
  - Not Support
- Include in Future Budgeting
- Survey/Final Design
- Installation



# RESIDENT FEEDBACK





# ADDITIONAL COMMENTS OR QUESTIONS

- Please Fill Out a Comment Form

