

# Welcome to the Ketring-Gallup Park Master Plan Virtual Public Meeting!

We will get started shortly.

December 7, 2023



KETRING-GALLUP PARK  
MASTER PLAN



# Agenda

Introductions

Master Plan Process & Timeline

Master Plan Goals

Community & Stakeholder Engagement Summary

Community-Identified Design Principles

Existing Conditions Summary

Concept Alternatives

Q & A

Summary

Next Steps



## Meeting format:

Live video feed presentation.

Meeting participants are muted and video off by default.

Meeting is being recorded. The recording can be viewed by visiting the project website (below).



## During the meeting:

Type questions into the Q&A box.

Type comments into the Chat.

Participate in polls to provide feedback.



## After the meeting:

Take the survey to provide more detailed feedback:

[bit.ly/kgpmps3](https://bit.ly/kgpmps3)

Visit the project website:

[littletonco.gov/Ketring-GallupPark](https://littletonco.gov/Ketring-GallupPark)

QR Code to the survey:



# Project Team



**Kelsey Stansfield**

City of Littleton  
Manager of Grounds, Open Space & Natural Resources



**Melissa Reese-Thacker**

South Suburban Parks & Recreation  
Planning Manager



**Jay Henke**

Flow Design Collaborative  
Principal



**Christie Allen**

Flow Design Collaborative  
Landscape Architect



**Sydonne Blake**

Flow Design Collaborative  
Restorative Systems Designer



**Terry Freeman**

Two Forks Collective  
Public Engagement

THANKS TO THE PROJECT MANAGEMENT TEAM & KEY STAKEHOLDERS:

**Littleton Museum**

Timothy Nimz  
Becky Kosma

**Bemis Library**

Dennis Quinn  
Richard Allen

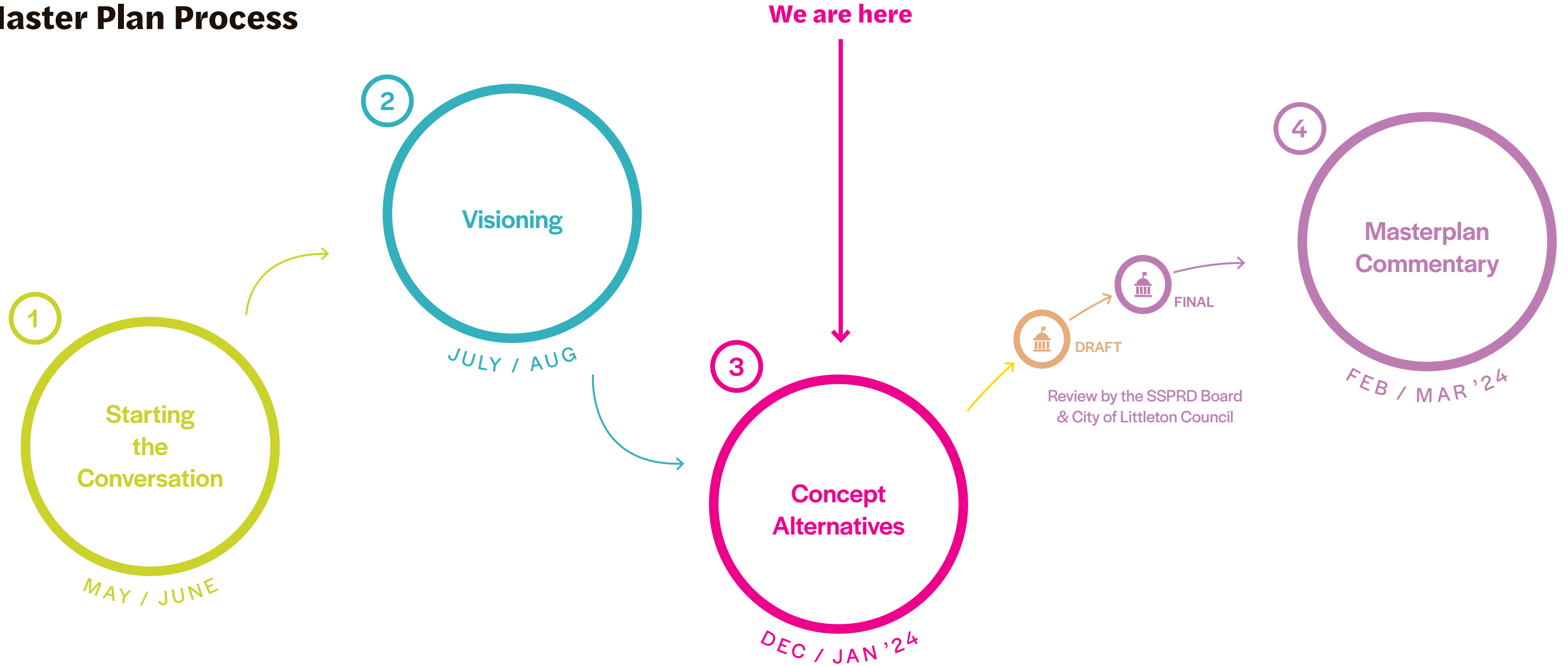
**City of Littleton**

Keith Reester  
Brent Soderlin  
Kenna Davis  
Sarah White  
David Gilbert  
Mary Brand Danser

**SSPRD**

Ryan Hegreness  
Andy Jennings  
Cullen O'Brien  
James Sudderth  
Joseph Odrzywolski  
Joe Ott

# Master Plan Process



## Phase 1.

Build trust and relationships with the community and project stakeholders.

Raise awareness of the Ketrington-Gallup Park Masterplan.

Understand current perceptions of the park through a simple online survey and small group discussions.

## Phase 2.

Discover the community's vision for the future of Ketrington-Gallup Park.

In addition to a second online survey, create an interactive installation within the park to solicit ideas and opinions of possible improvements.

## Phase 3.

Solicit the community's feedback on two conceptual alternative plans for Ketrington-Gallup Park.

Feedback gathered in this stage will help refine the vision for development into a preliminary master plan.

## Phase 4.

Present the compiled vision for the future of Ketrington-Gallup Park back to the community to understand if the preliminary master plan accurately depicts their input from Phases 1 - 3.



# Master Plan Goals



Unify the parks & promote their identity as Littleton's cultural core.



Increase accessibility to the park for the community as a whole.



Facilitate partnerships between project stakeholders that continue beyond this planning effort.



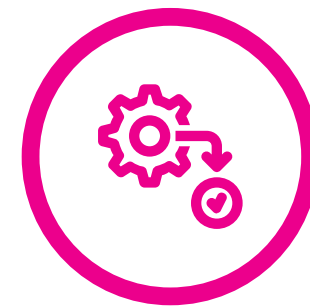
Consider the security implications.



Address equity areas and needs.



Utilize this opportunity to provide or incorporate program or park elements that may not exist nearby.



End with a solid implementation strategy.

# Community & Stakeholder Engagement Overview

## COMMUNITY PARTNERS:

- Historic Downtown Littleton Merchants
- Littleton Downtown Development Authority
- Littleton Business Chamber
- Historic Littleton Inc.
- Arapahoe Community College
- Friends of the Library
- Littleton Promise
- VFW Post #4666 / Littleton10
- Littleton Public Schools
- Aberdeen Village HOA

**2 ONLINE SURVEYS**  
with a total of 765 respondents

**1 INTERACTIVE PARK INSTALLATION**  
running for 8 weeks

**3 STAKEHOLDER MEETINGS**  
2 in-person, 1 virtual

**2 DOOR-TO-DOOR CANVASSING EFFORTS**  
mailed postcards, door hangers reaching 250 residences

**6 SMALL GROUP MEETINGS**  
with a total of 144 attendees

**2 LARGE COMMUNITY EVENTS**  
Summer Concert Series & Western Welcome Week

**9 PUBLIC NEWSLETTER PUBLICATIONS**  
virtual and print news



Museum  
Summer Concert

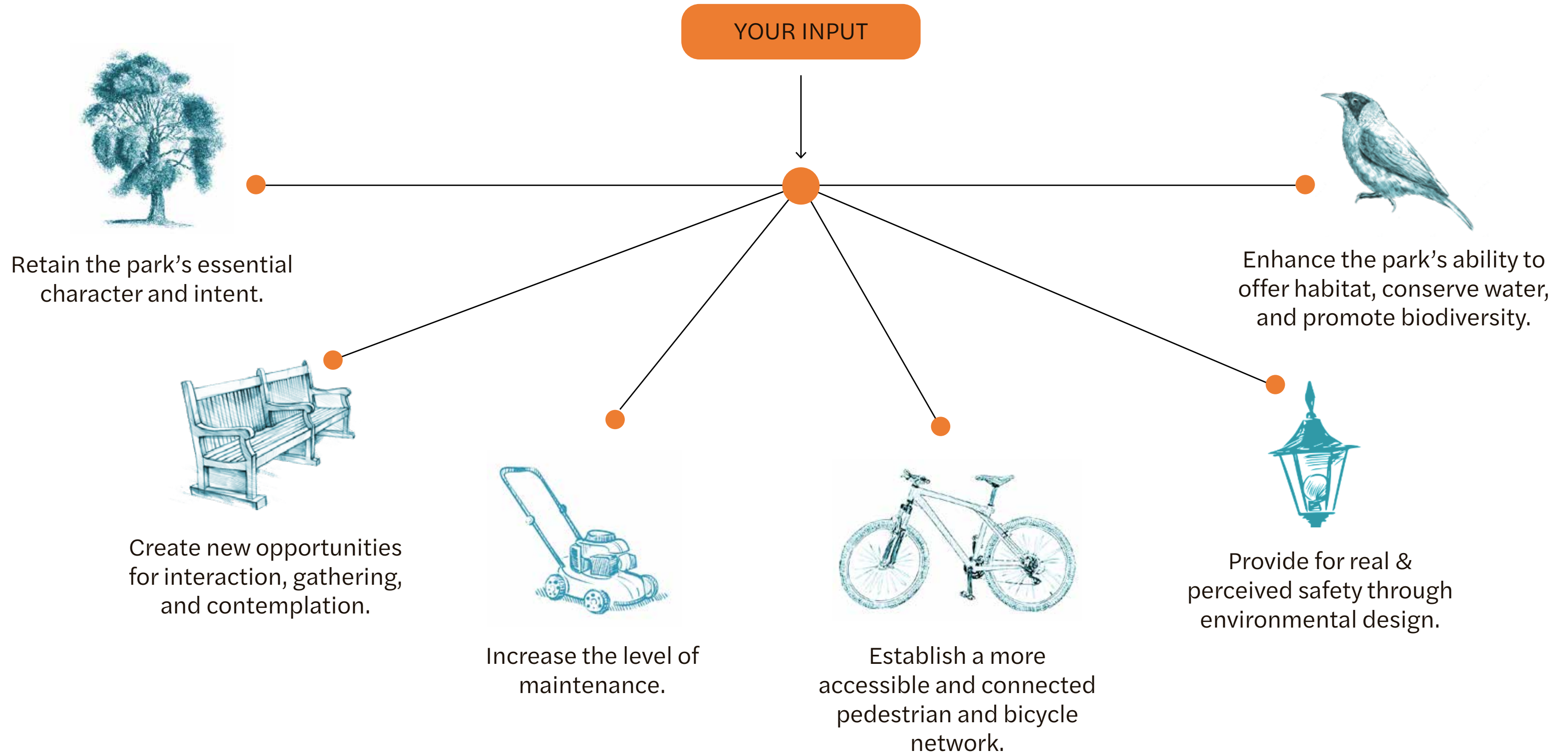


Stakeholder walk



Western Welcome  
Week

# Community-Identified Design Priorities





# Existing Conditions



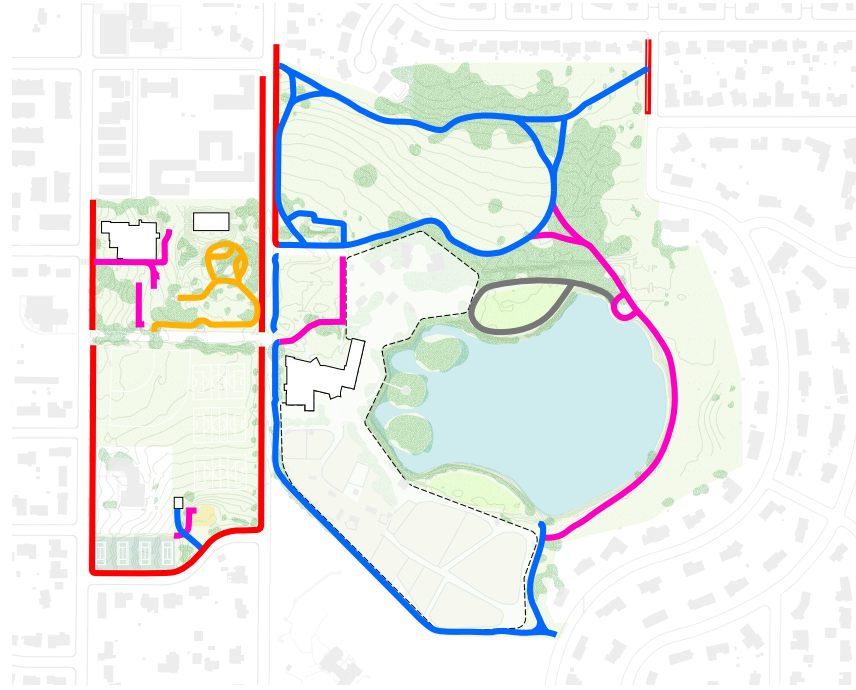
-  Existing tree
-  Access points
-  Native grasses
-  Irrigated bluegrass
-  Gathering space
-  Parking
-  Playground
-  Lake
-  Wetland
-  Active recreation field
-  Museum property

200'





# Existing Conditions

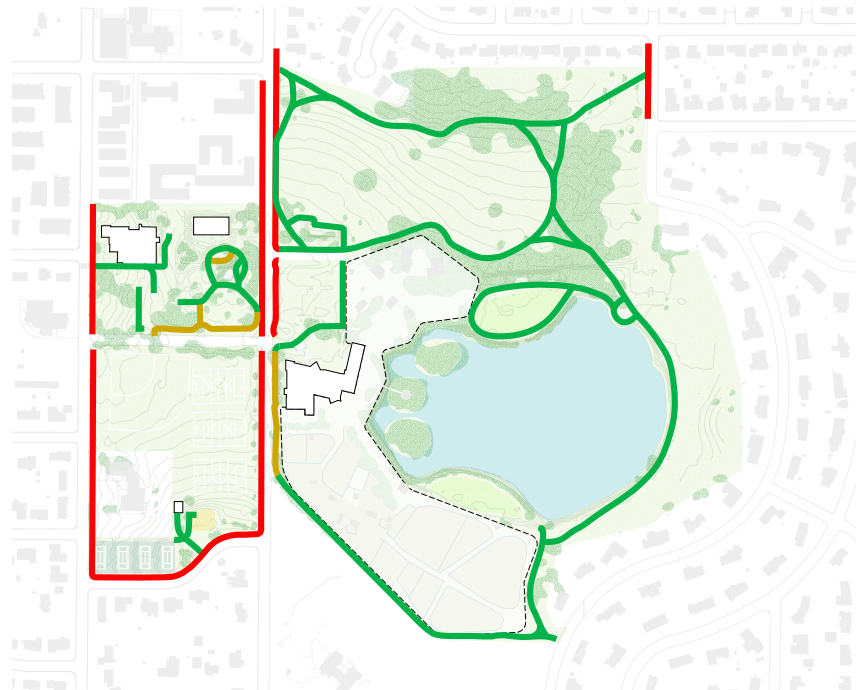


## Pavement surfacing

A variety of pavement types (in varying states of repair) form the existing circulation network. No formalized crossings exist between park spaces.

### Key

- Asphalt
- Concrete
- Pavers
- Gravel
- Curb-attached walk (30")



## Pavement width

All existing pedestrian walkways along the park's perimeter and internal roads would be considered ADA non-conforming.

### Key

- 5' or greater
- 4-5'
- Less than 5'



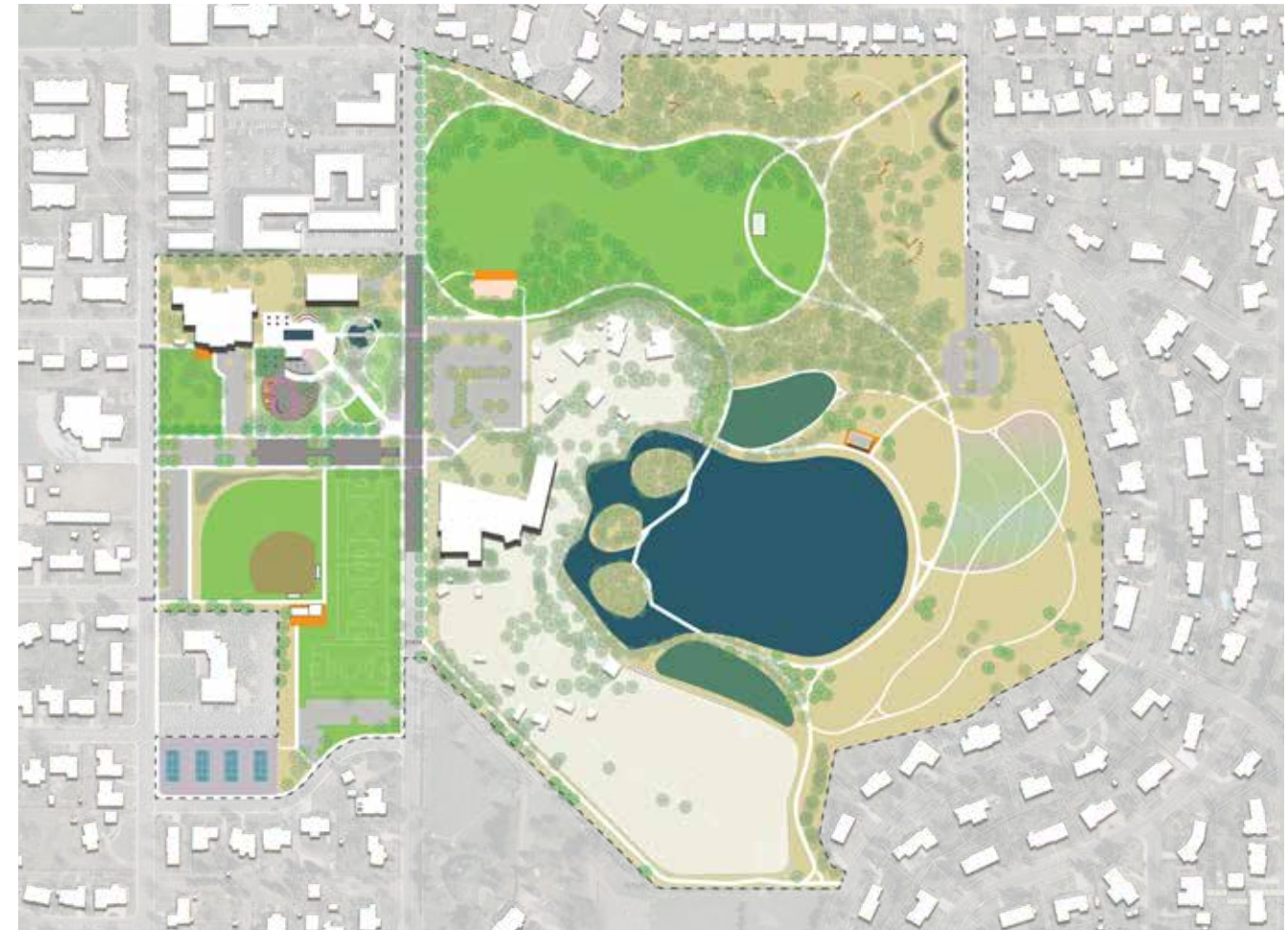


# Proposed Concept Alternatives

## Alternative #1 - "Restore & Connect"

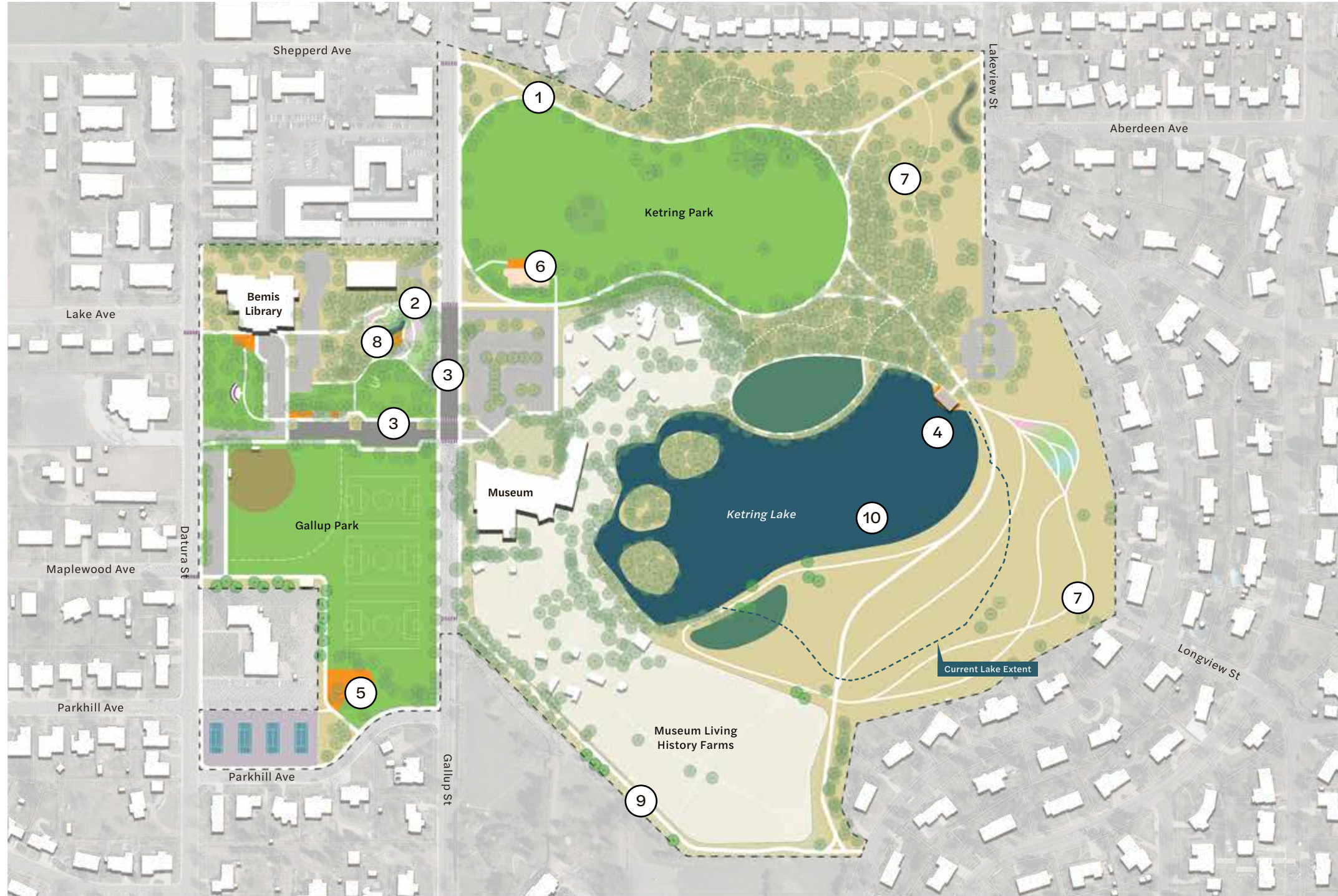


## Alternative #2 - "Cultural Core"





# Concept Alternative #1 - "Restore & Connect"



Understanding the love the community has for Ketrings Park, Gallup Park and Gallup Gardens, this concept aims to take a light touch in improving the aspects of the parks that are special to people, while rejuvenating these spaces to improve access, increase safety, and expand the natural diversity of the parks.

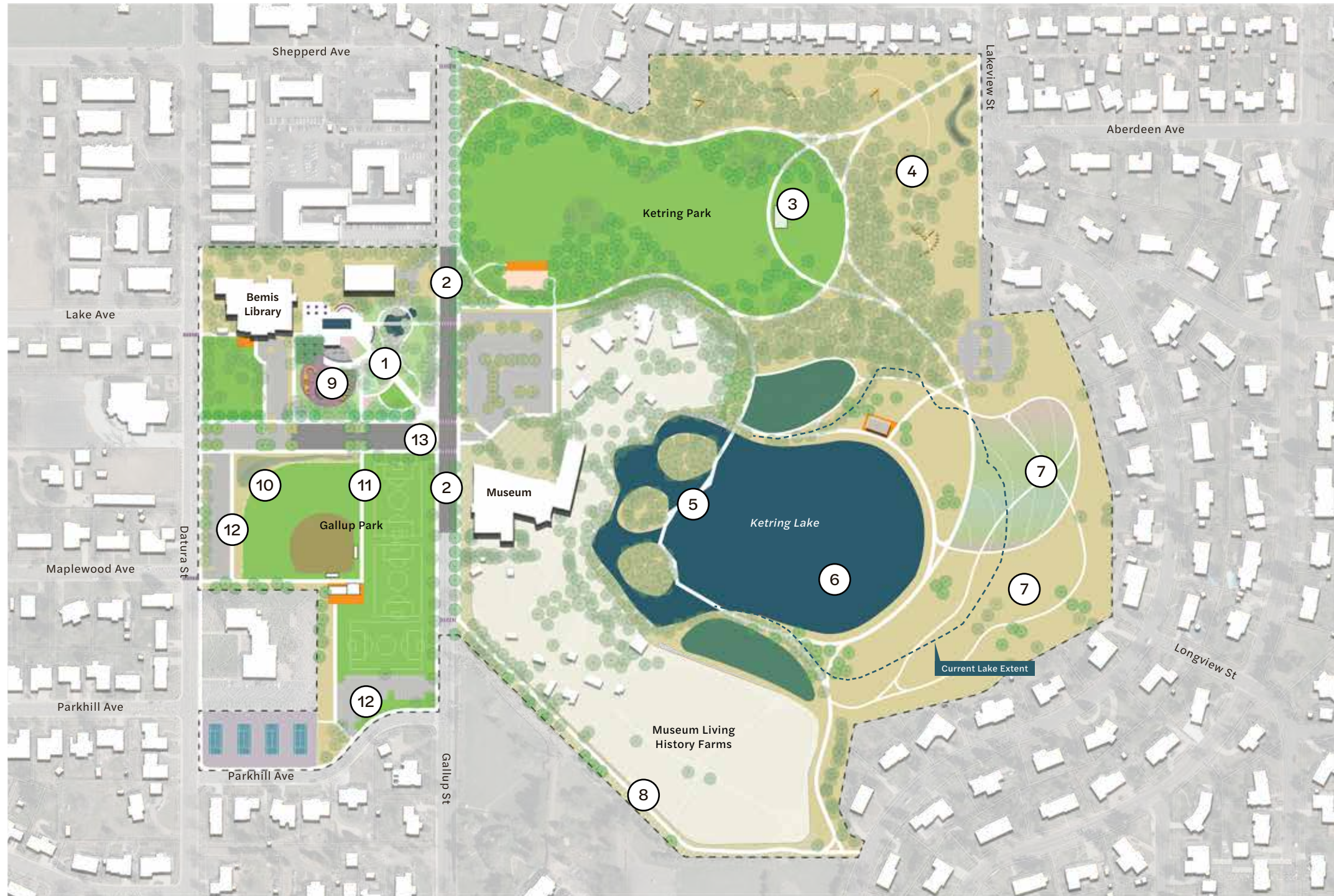
1. Improved access & connectivity throughout the parks
2. Improved pedestrian connection between Bemis Library and Littleton Museum
3. Shared street concept at Library Lane and Gallup Street
4. Expanded fishing pier with pavilion at Ketrings Lake
5. Updated playground in existing location in Gallup Park
6. Expanded World War II Memorial at Ketrings Park
7. Improved & restored natural areas
8. Restored Gallup Gardens and water feature
9. Improved & widened south trail connection from Gallup St to Ketrings Lake
10. Ketrings Lake size reduction (based on the City of Littleton's Integrated Water Resources Plan)

200'





# Concept Alternative #2 - "Cultural Core"



In addition to many of the same improvements proposed in Alternate 1, The Cultural Core concept looks to create an inviting and activated connection between the Bemis Library and Littleton Museum.

1. Reimagined Bemis Library campus & Gallup Gardens
2. Expanded shared street concept at Gallup Street
3. Picnic pavilion overlooking the Ketring Park lawn
4. Discovery play elements included along soft-surface trails through the Ketring Park natural areas
5. Ketring Lake loop walk with boardwalk connection across the lake (the boardwalk would not provide access to islands)
6. Ketring Lake size reduction (alternative shape) (Based on City of Littleton Integrated Water Resources Plan)
7. Demonstration gardens or native/xeric gardens and increased tree planting in the open space east of Ketring Lake
8. Improved & widened south trail connection from Gallup St to Ketring Lake
9. Relocation and expansion of the Gallup Park playground into Cultural Core
10. Reoriented ballfield to accommodate parking and water quality features
11. Access/connections to multi-use fields at Gallup Park
12. Gallup Park parking expansion
13. Library Lane closed to through traffic at intersection with Gallup Street (still provides 12 parking)

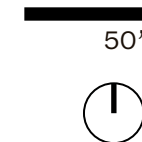


## **Proposed Improvements Common to Both Concept Alternatives**

1. Formation of new park connections & improvements to the existing circulation network
2. Tree canopy preservation and transition plan
3. Native area vegetation improvements for increased biodiversity and reduced water use
4. Additional seating opportunities and shade provision
5. Safety improvements through dark-sky friendly pedestrian lighting
6. “Shared street” concept — Traffic calming & multimodal improvements to Library Lane & Gallup St
7. Southern Trail Connection improvements



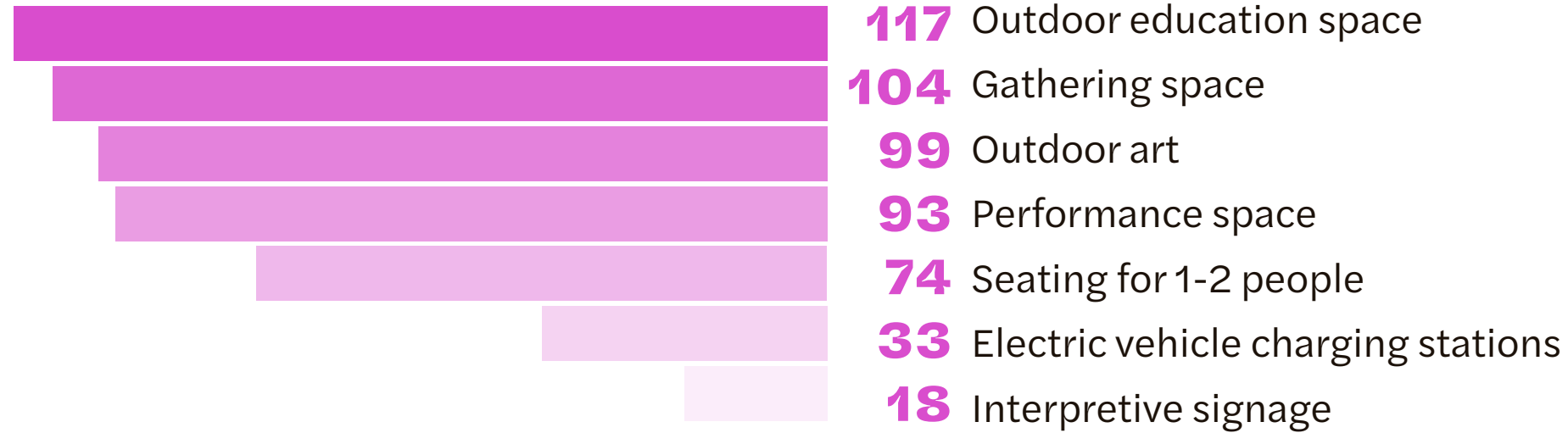
# Bemis Library & Gallup Gardens





# Survey #2 Results

## Bemis Library Grounds



Would love to sit and have lunch with a book here, or catch a local band outside.

Better pedestrian access between the library and the museum.

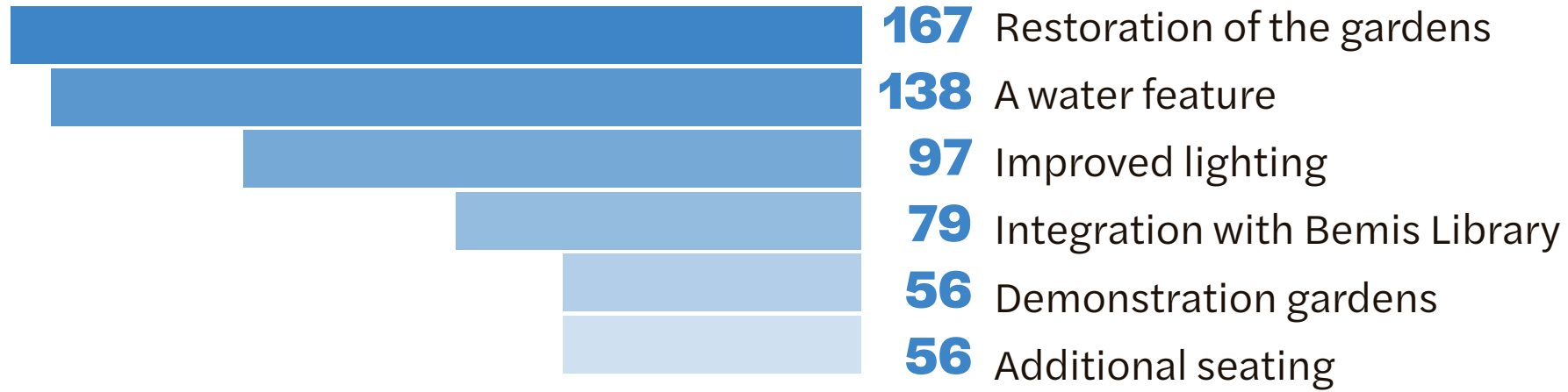
Parking can be problematic here, depending on day of week and times. Please do not cut into parking by converting spaces to electric vehicle charging stations.

Preserve as much as possible the library's role of study and contemplative space.



# Survey #2 Results

## Gallup Gardens



I would specifically like to see native plantings that will support our local ecosystem.

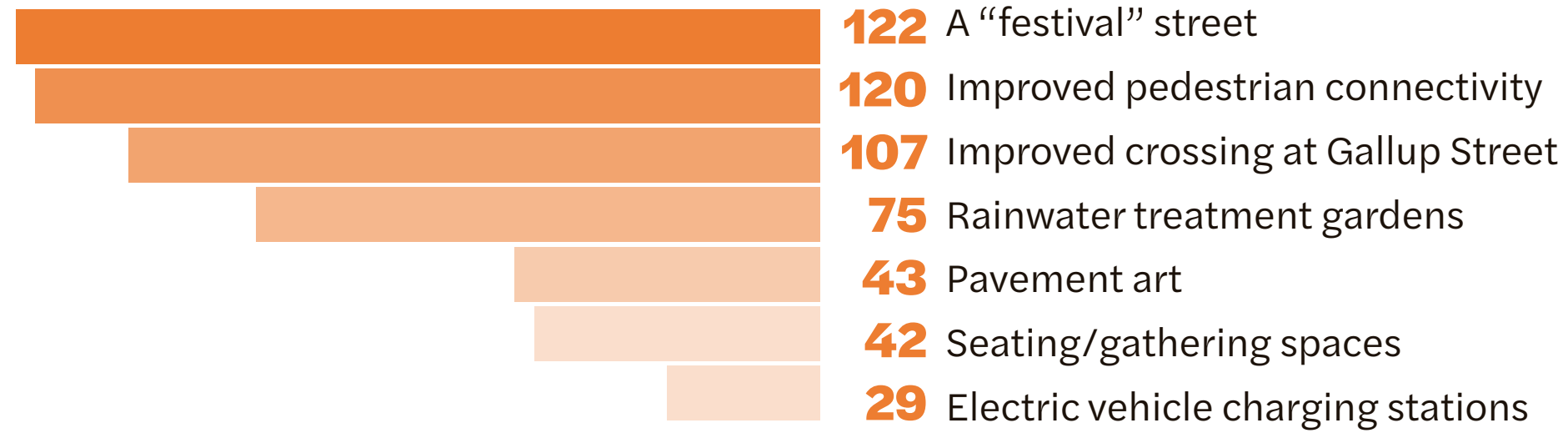
I avoid walking there at dusk or later. It doesn't seem safe.





# Survey #2 Results

## Library Lane



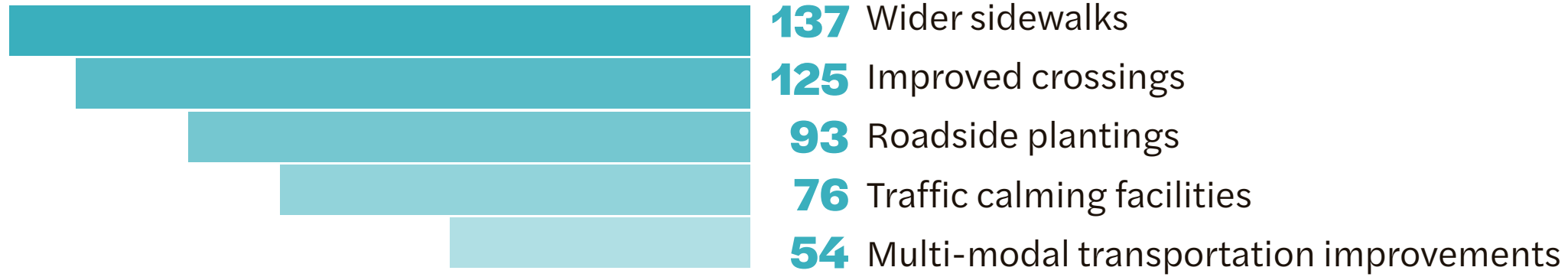
Definitely need a safer crossing between the library and museum.



Making it available for street fairs / farmers market would be wonderful!

# Survey #2 Results

## Gallup Street



Anything that improves the ability to get safely between Bemis Library and the Museum and the soccer fields would be great.

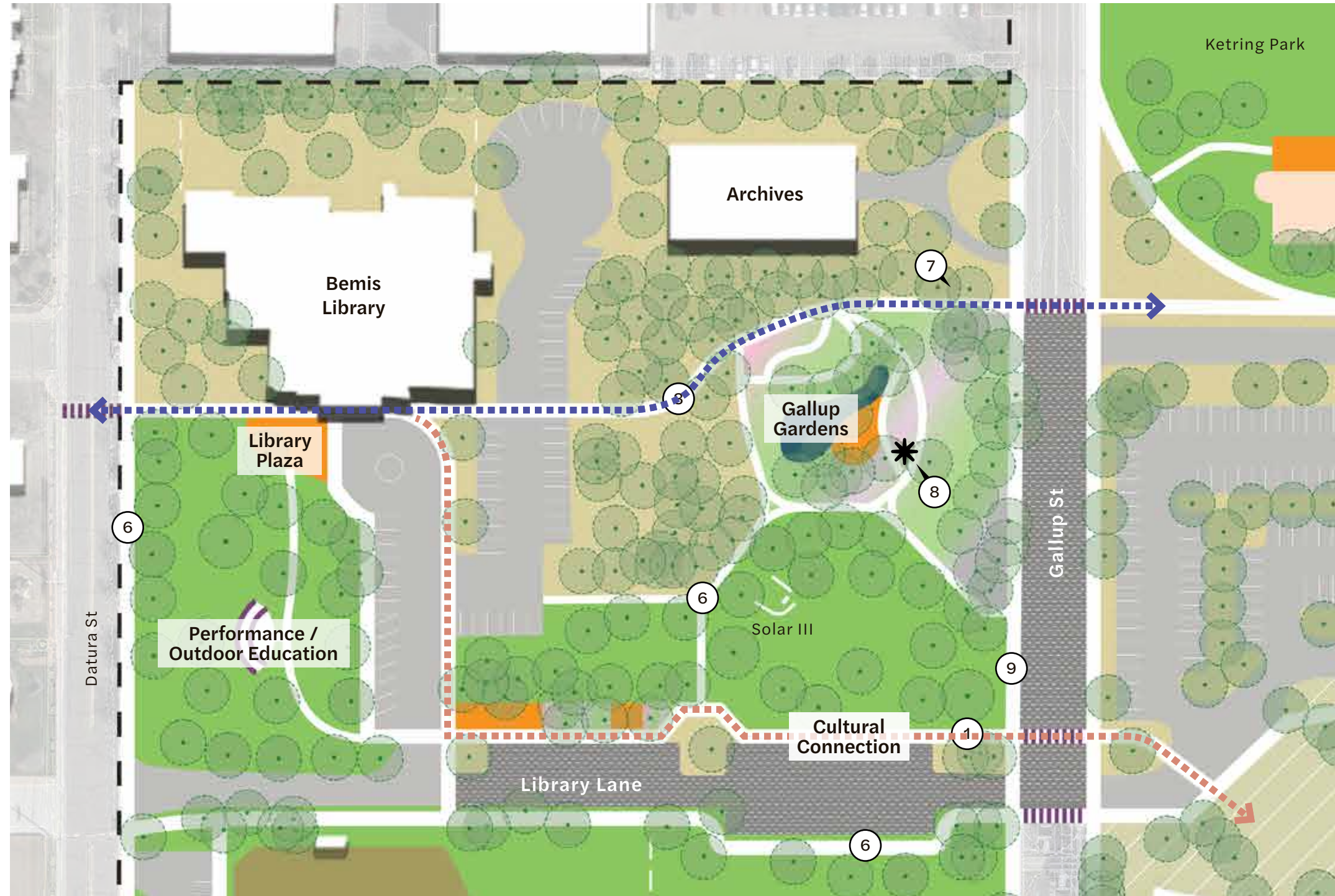
The current sidewalk is too narrow to walk comfortably with a stroller.

Some way to reduce vehicle speeds on that stretch.








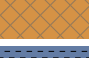

# Concept Alternative #1 - "Restore & Connect"

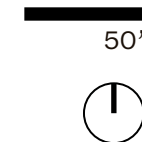
## Bemis Library & Gallup Gardens



### Proposed Improvements

1. Improved pedestrian connection between Bemis Library and Littleton Museum (Cultural Connection)
2. Outdoor education / performance venue adjacent to Bemis Library
3. New pedestrian connection between Datura St, Bemis Library and Ketring Park loop
4. Outdoor gathering spaces (small to large) with additional seating
5. Restoration of existing planting areas & water feature in Gallup Gardens
6. New concrete walks
7. Pedestrian lighting
8. Additional outdoor art opportunities

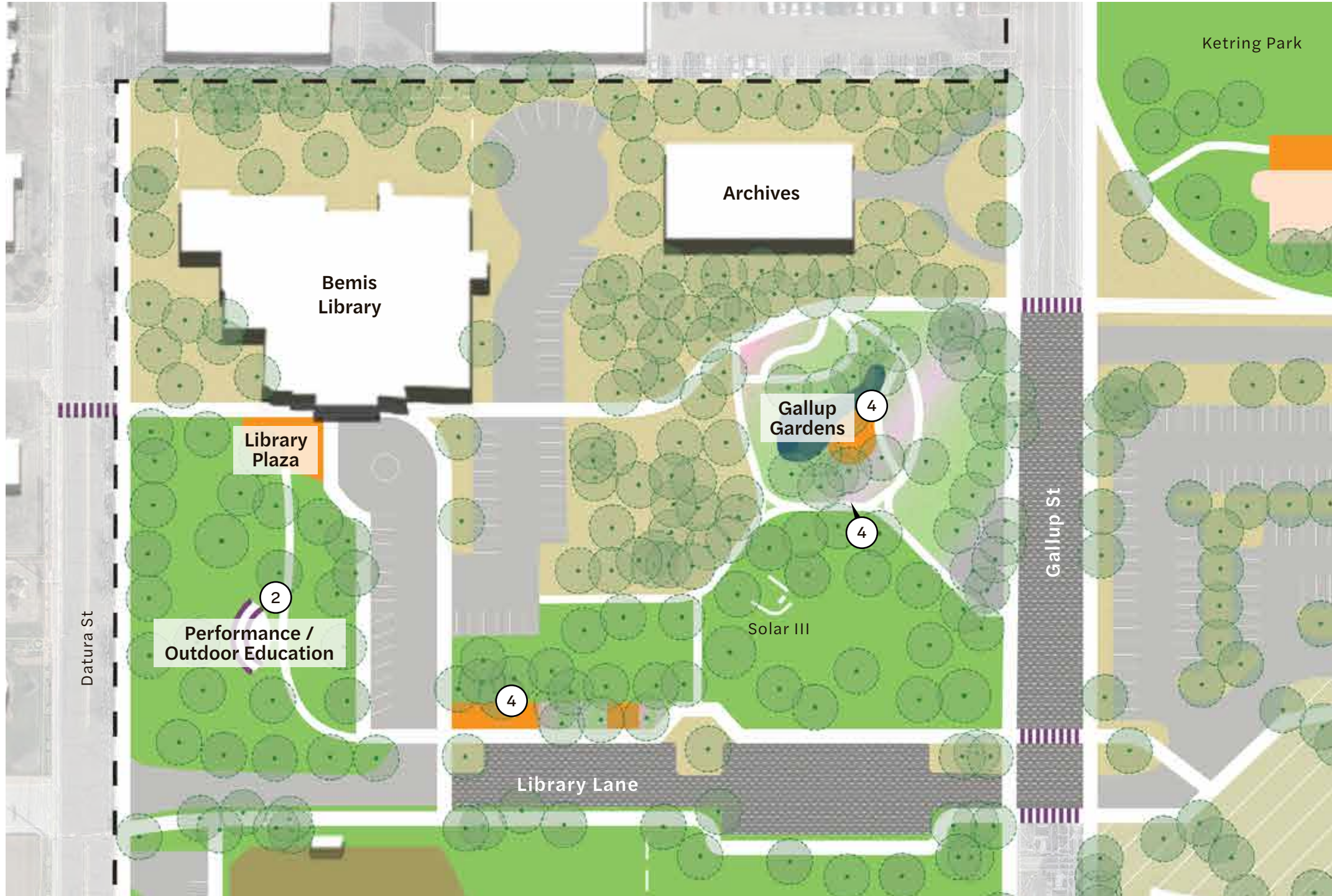
-  Proposed tree
-  Existing tree
-  Native grasses
-  Irrigated bluegrass
-  Garden
-  Gathering Space
-  Shared street





# Concept Alternative #1 - "Restore & Connect"

## Bemis Library & Gallup Gardens



Outdoor education / performance venue adjacent to Bemis Library

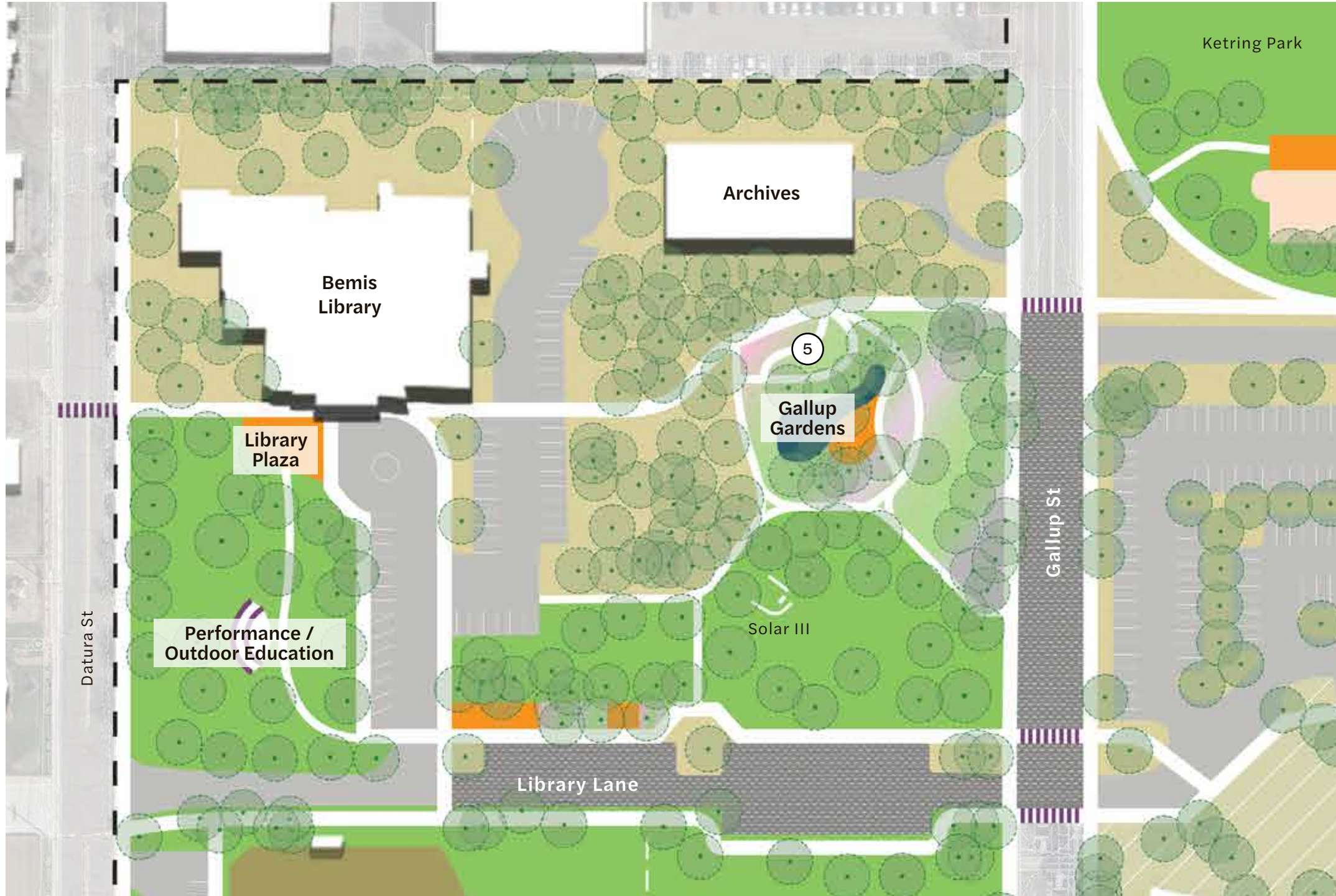


Outdoor gathering spaces (small to large) with additional seating



# Concept Alternative #1 - "Restore & Connect"

## Bemis Library & Gallup Gardens

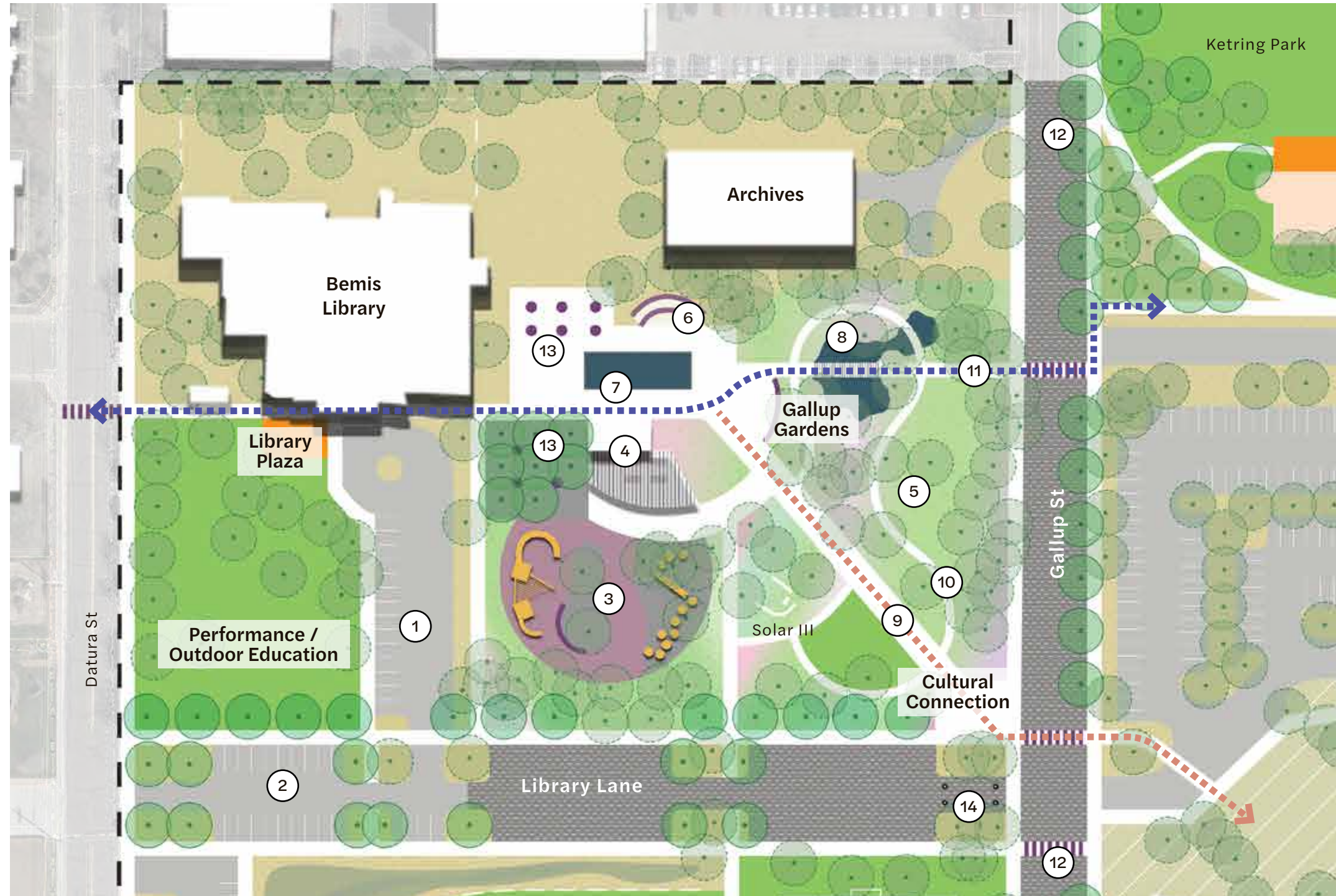


Restoration of existing planting areas & water feature, addition of educational signage



# Concept Alternative #2 - "Cultural Core"

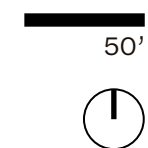
## Bemis Library & Gallup Gardens



### Proposed Improvements

1. Modify Bemis Library parking
2. Expand Library Lane parking
3. Relocate playground to Cultural Core
4. Restroom/picnic pavilion
5. Re-imagine Gallup Gardens
6. Outdoor education / performance venue between Bemis Library and Gallup Gardens
7. Architectural water feature
8. Renovate naturalistic water feature & pond
9. Cultural Connection pedestrian promenade between Bemis Library and Littleton Museum
10. Expand the story walk
11. Direct connection to Ketring Park
12. Expand shared street concept at Gallup Street
13. Plaza space adjacent to the library
14. Close Library Lane to through traffic at intersection with Gallup Street (so that it can still provide parking for the library and Gallup Gardens)

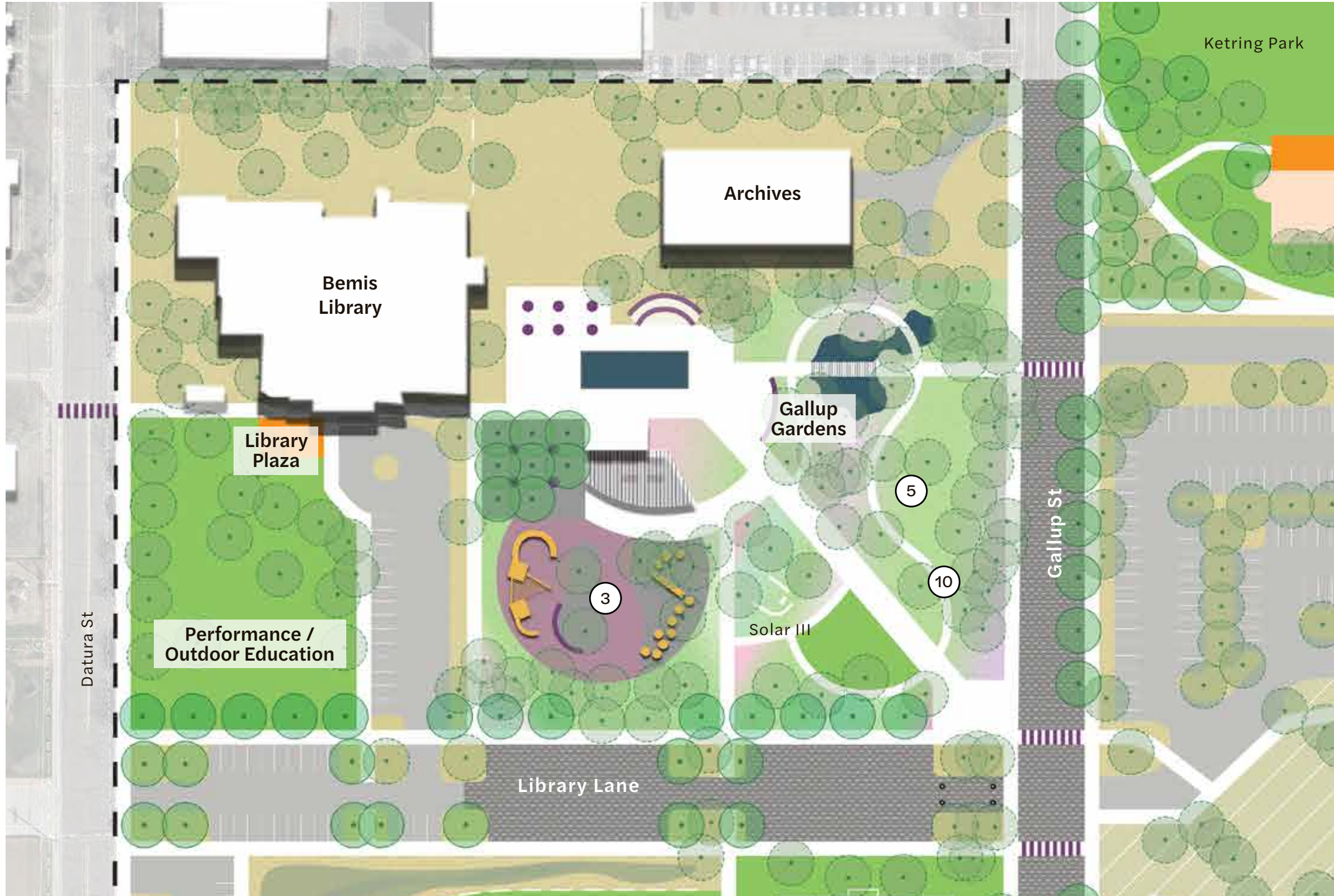
- Proposed tree
- Proposed flowering tree
- Existing tree
- Tables
- Native grasses
- Irrigated bluegrass
- Garden
- Gathering Space
- Shared street





# Concept Alternative #2 - "Cultural Core"

## Bemis Library & Gallup Gardens



Relocate playground to Cultural Core

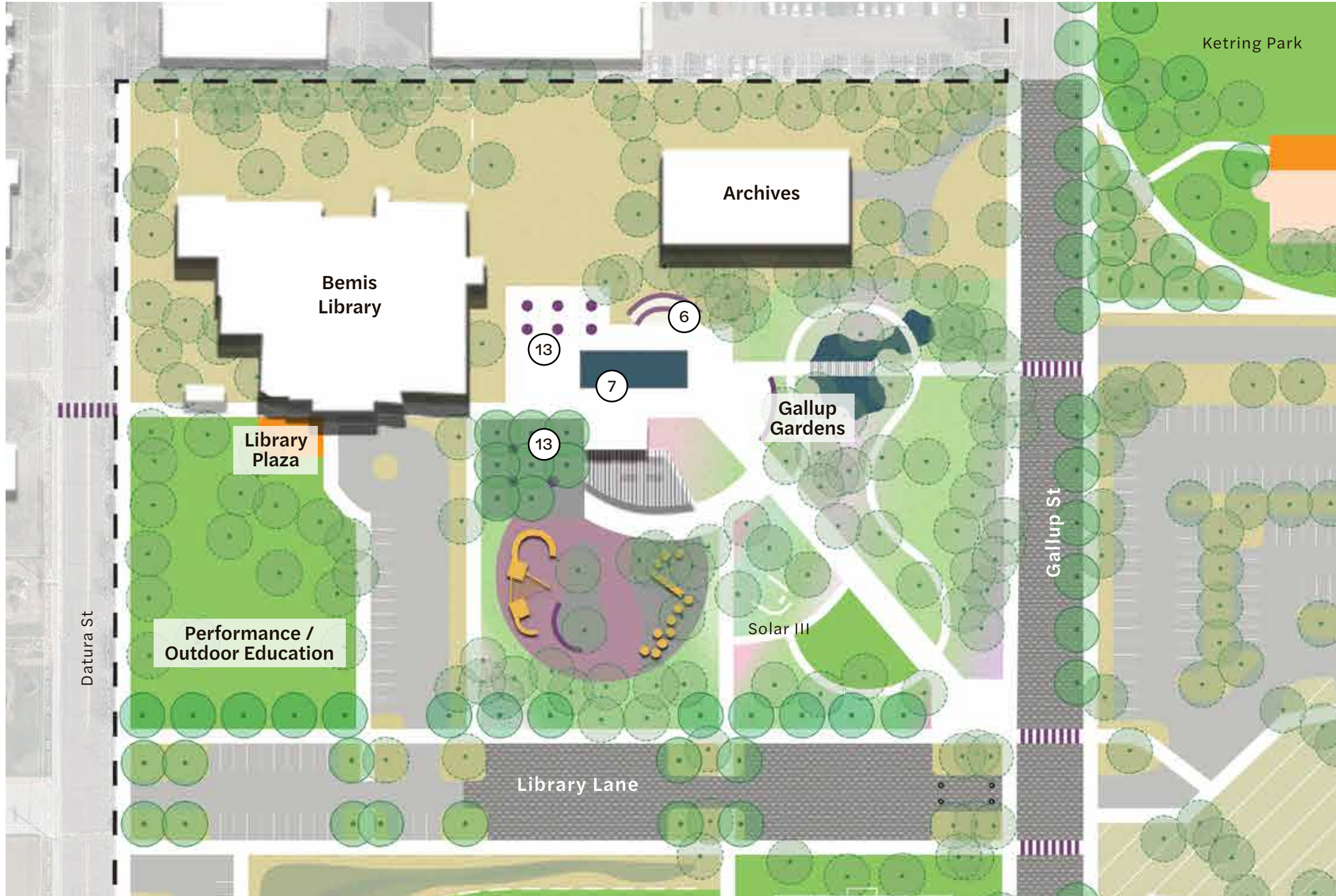


Re-imagine Gallup Gardens



# Concept Alternative #2 - "Cultural Core"

## Bemis Library & Gallup Gardens



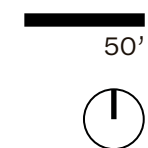
6  
Outdoor education / performance venue between Bemis Library and Gallup Gardens



7  
Architectural water feature



13  
Plaza space adjacent to Library





# Gallup Park

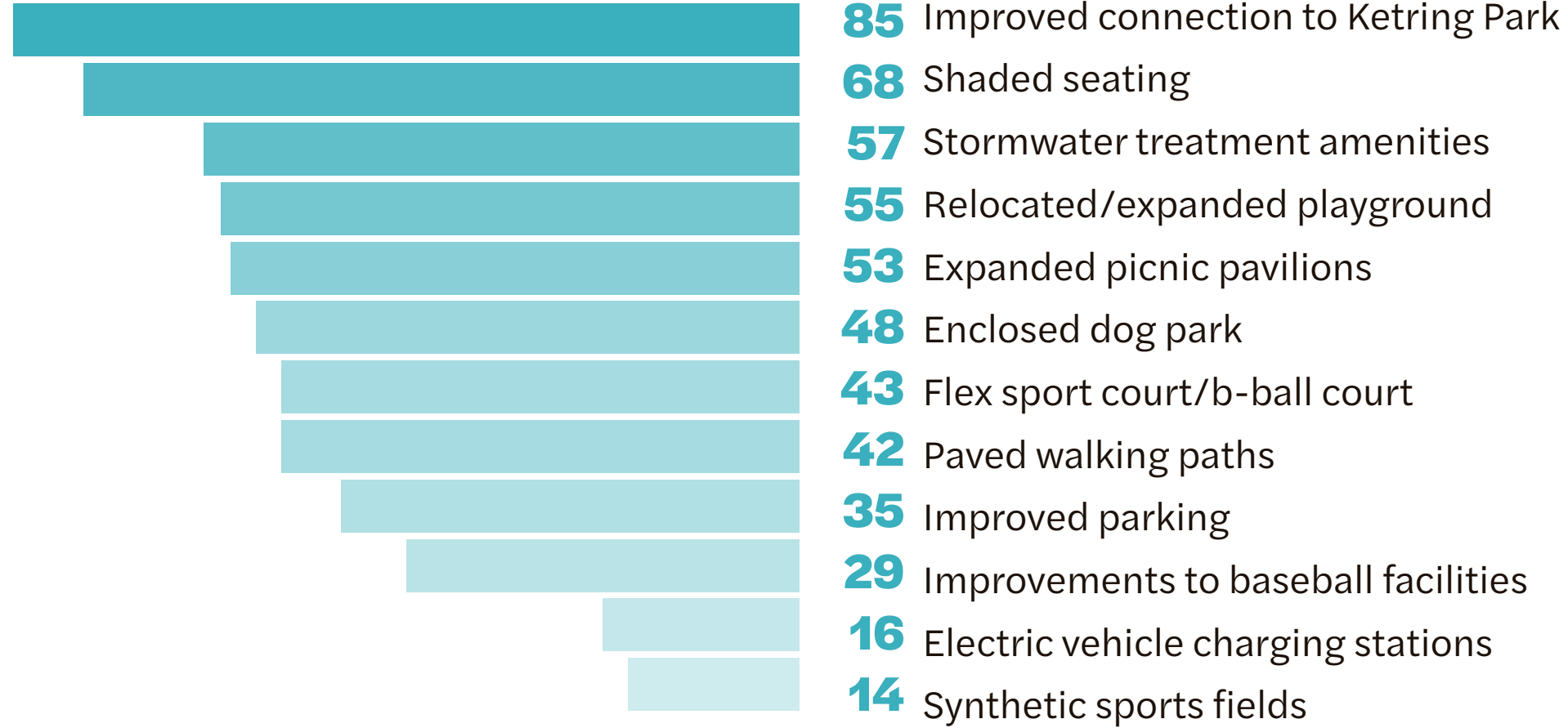


50'



# Survey #2 Results

## Gallup Park



We don't use this park because there isn't enough shade.

We don't use this park because there isn't enough shade.

More picnic gathering areas.





# Survey #2 Results

## Gallup Park Playground



- 111** Updated and expanded playground
- 110** Shaded play features
- 75** Additional shaded seating
- 73** Multi-generational play elements
- 69** Interactive play / art elements
- 56** Accessible play elements



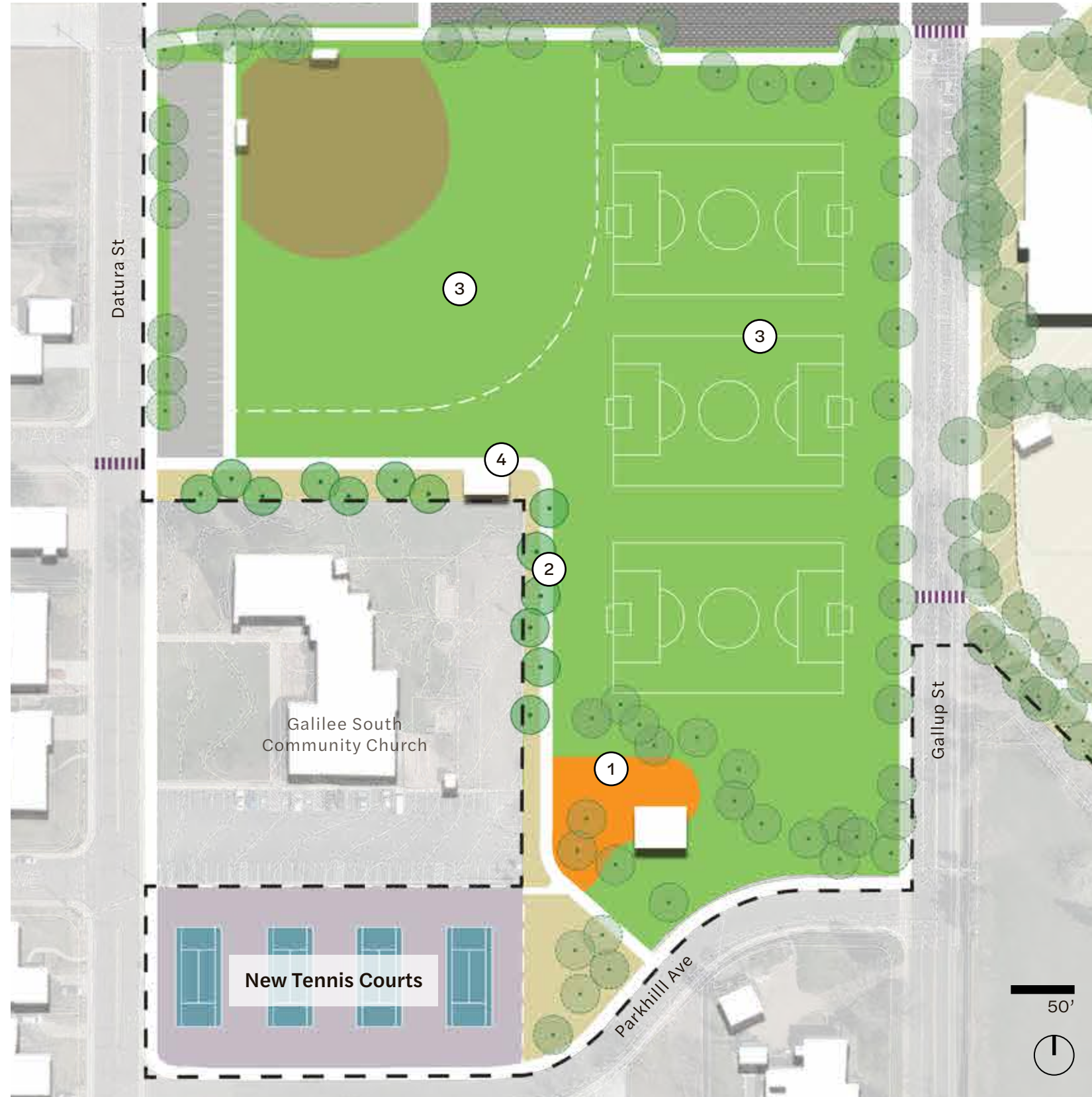
Accessible play spaces are amazing!

Increase tree canopy.

Splash pad. There are no walkable pools or splash pads in this neighborhood and many houses don't have air conditioning.

# Concept Alternative #1 - "Restore & Connect"





## Gallup Park



### Proposed Improvements

1. Renovate and expand the Gallup Park playground in approximately the same location it exists today
2. Develop a pedestrian connection from the ballfield to the playground and Parkhill Avenue
3. Retain the existing ballfield and multi-use fields in their current locations and configurations
4. Centralize maintenance facility and add portable restroom

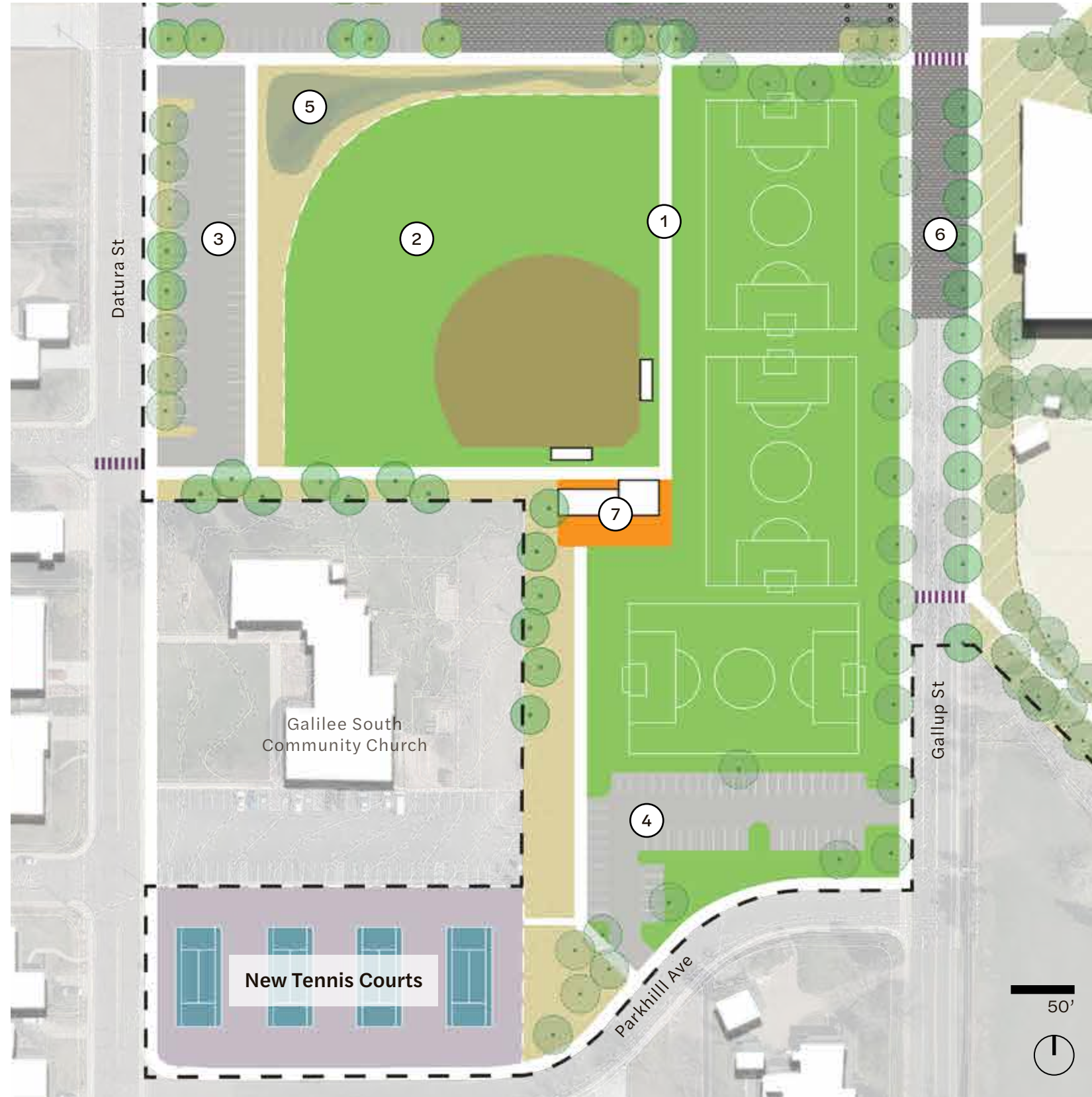


-  Proposed tree
-  Existing tree
-  Native grasses
-  Irrigated bluegrass



# Concept Alternative #2 - "Cultural Core"





## Gallup Park



### Proposed Improvements

1. Develop central pedestrian connection from Cultural Core to Parkhill Avenue
2. Reorient ballfield
3. Expand ballfield parking
4. Relocate playground to Cultural Core, replace with parking to support tennis and multi-use fields
5. Expand stormwater quality infrastructure along Library Lane (i.e. rain gardens)
6. Expanded shared street concept at Gallup Street
7. Centralize maintenance facility and portable restroom with shade structure



-  Proposed tree
-  Existing tree
-  Native grasses
-  Irrigated bluegrass



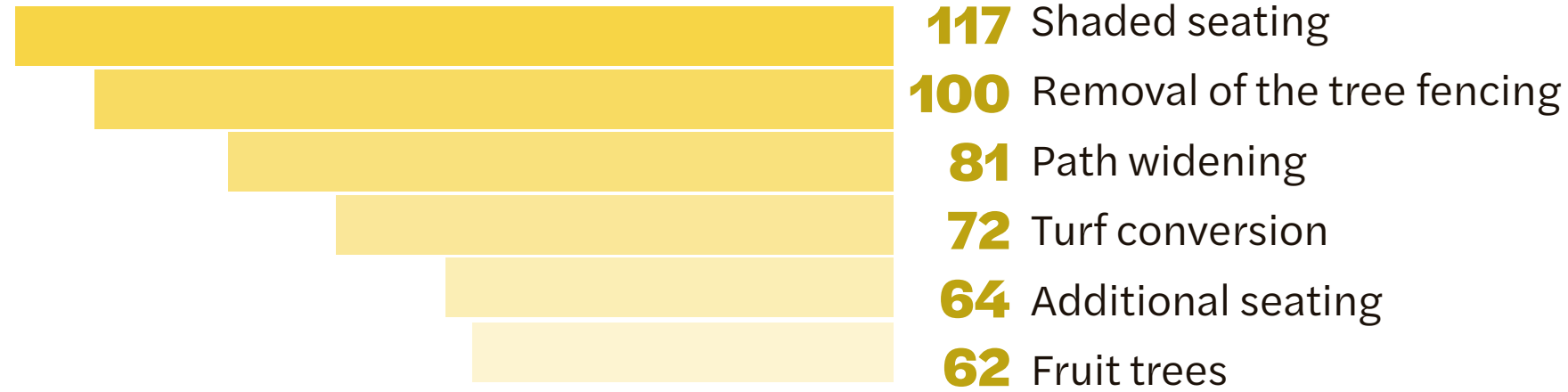
# Ketring Park





# Survey #2 Results

## Ketring Park



This is one of the largest open spaces/areas left in Littleton. Keeping it open and undisturbed for the community a few decades from now would be thoughtful.

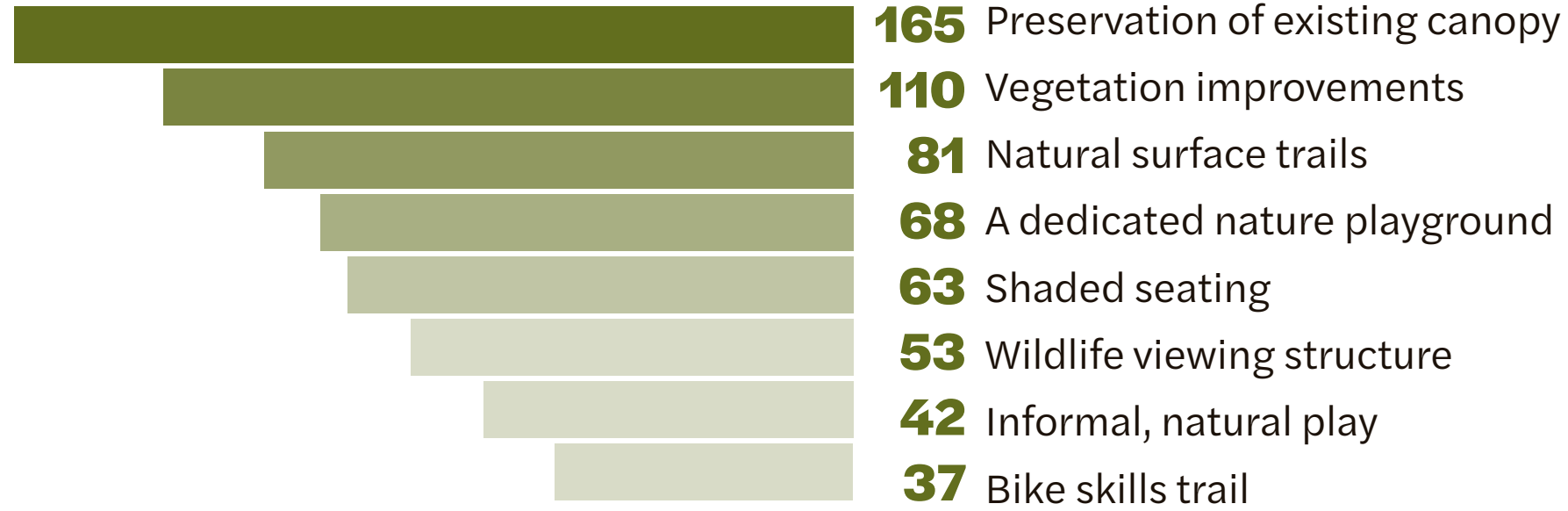
Planting (& keeping alive) more trees in preparation for the declining older trees dying.

Would like to see more diversity instead of so much turf.



# Survey #2 Results

## Ketring Park Natural Areas



Interpretive kiosk telling visitors what they can look for: screech owls, foxes, coyotes, etc and identifying the wild plums, chokecherry bushes and old apple trees from bygone days!

Anything that helps people understand and enjoy nature in this neighborhood park!

The raw nature of this area is very important to the essence of Ketring Park.



# Concept Alternative #1 - "Restore & Connect"

## Ketring Park



### Proposed Improvements

1. Replace existing asphalt walks with wider concrete walks
2. Expand World War II Memorial for improved accessibility
3. Develop secondary soft-surface trail network
4. Habitat restoration and increased plant diversity of the Ketring Park natural areas
5. Develop an informal picnic area underneath the existing tree canopy near the southeast corner of the lawn area (no pavilion structure)



# Concept Alternative #2 - "Cultural Core"

## Ketring Park



### Proposed Improvements

[in addition to those from Alt #1]

1. Introduce more tree planting into the Ketring Park lawn
2. Develop a picnic pavilion at the east end of the Ketring Park lawn
3. Introduce discovery play elements along the soft-surface trails through the natural areas





# Ketring Lake





# Survey #2 Results

## Ketring Lake



Please protect the lake for the wildlife! It is a very valuable resource for all us city dwellers.

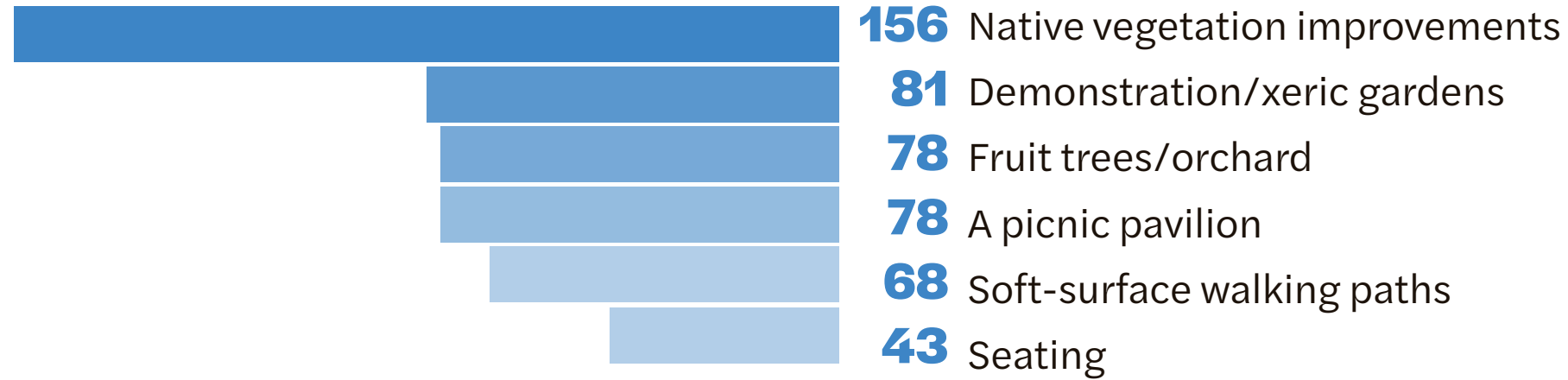
The water quality of the lake has been getting worse.

Having enough rangers to be able to patrol and keep all areas of the park safe...needs to be a priority.



# Survey #2 Results

## Ketring Lake Eastern Open Space



Just let it be.

Perfect for a native plant garden. And there's plenty of space for a picnic pavilion, which would be a great addition and make it user friendly to an additional demographic.

It would be really nice to see this area turned into an orchard / demonstration garden / permaculture food forest.

A shaded structure in this field would be perfect and adding local vegetation and examples of plants that do well in direct sun would be educational and create a more natural feeling environment.

Best to keep this area quiet and make it a beautiful natural grasslands.



# Concept Alternative #1 - "Restore & Connect"

## Ketring Lake



### Proposed Improvements

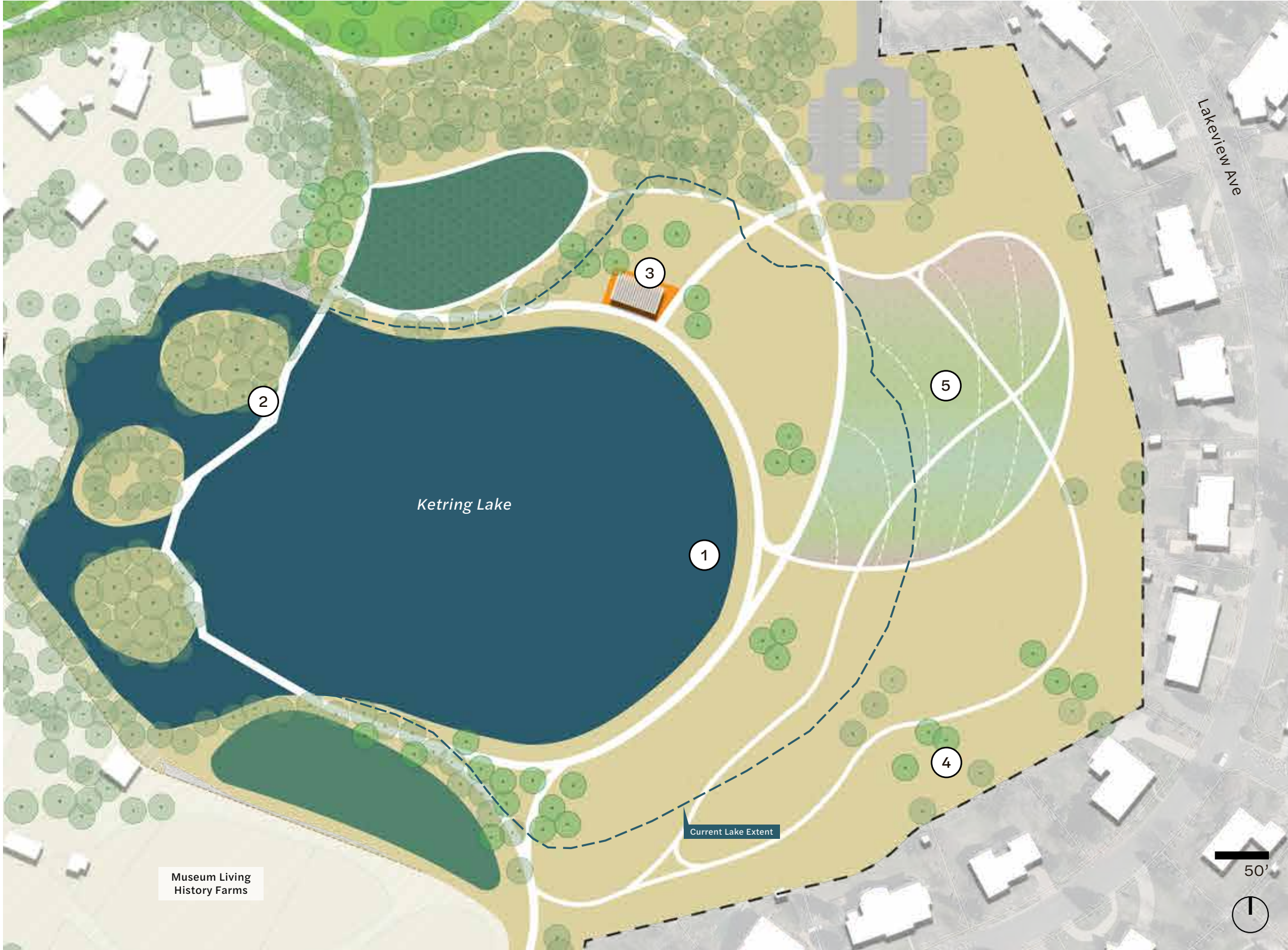
1. Lake reduction along the south side
2. Expanded fishing pier with picnic pavilion
3. Restored and expanded low-water native areas
4. Secondary soft-surface walking paths
5. Xeric gardens / pollinator meadows

- Proposed tree
- Existing tree
- Native grasses
- Irrigated bluegrass
- Garden
- Gathering Space



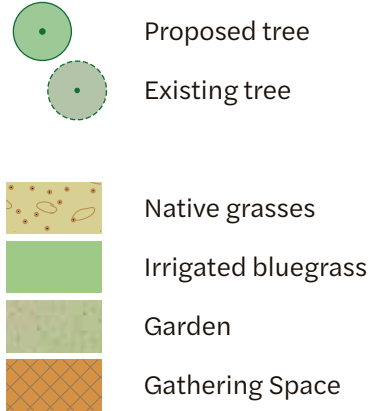
# Concept Alternative #2 - "Cultural Core"

## Ketring Lake



### Proposed Improvements

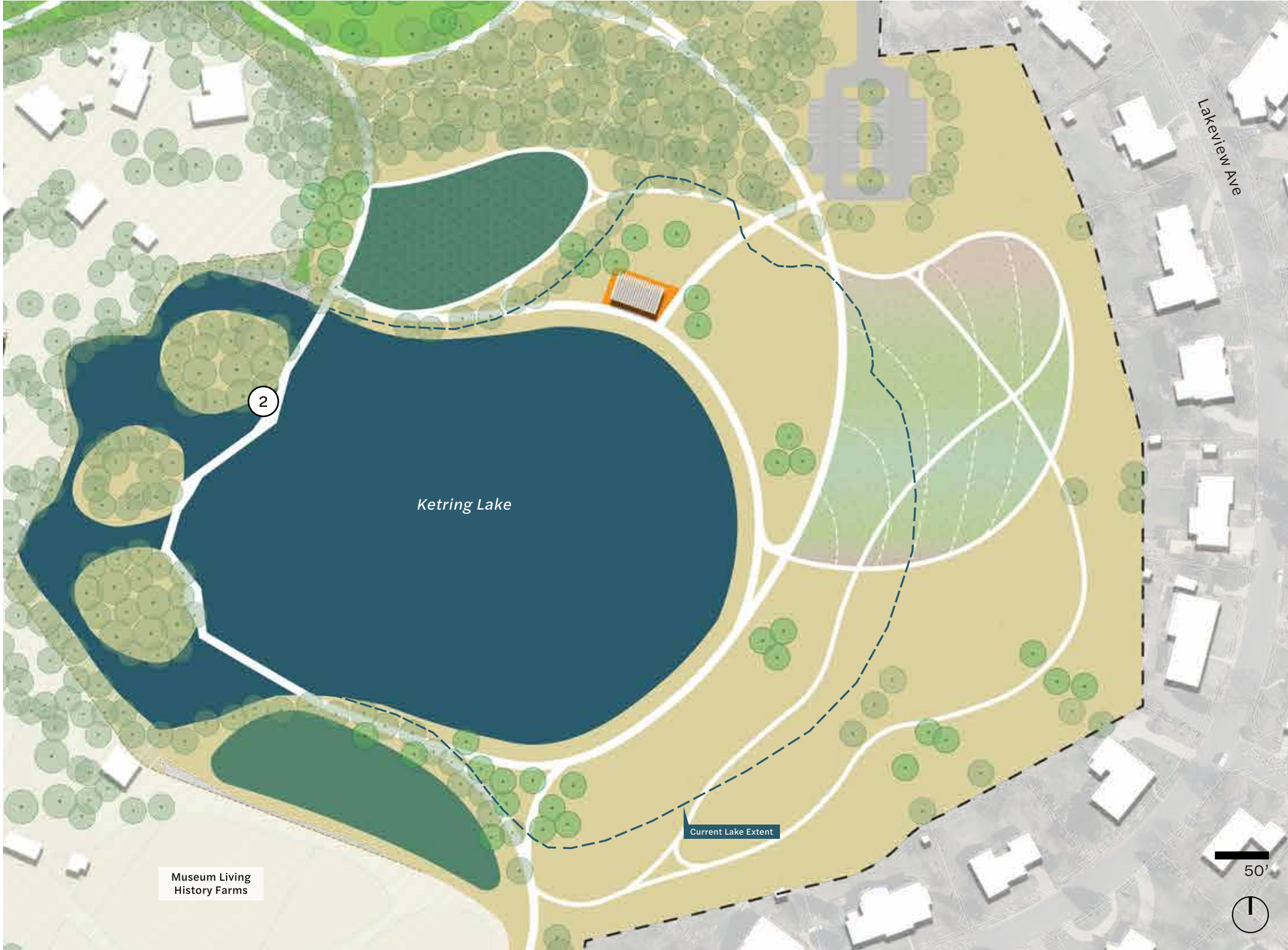
1. Lake reduction along the east side
2. Lake loop with boardwalk connection
3. New picnic pavilion overlooking the lake
4. Additional tree planting in the open space east of Ketring Lake
5. A larger demonstration / pollinator garden





# Concept Alternative #2 - "Cultural Core"

## Ketring Lake



Lake loop with boardwalk connection



## **Proposed Improvements Common to Both Concept Alternatives**

1. Formation of new park connections & improvements to the existing circulation network
2. Tree canopy preservation and transition plan
3. Native area vegetation improvements for increased biodiversity and reduced water use
4. Additional seating opportunities and shade provision
5. Safety improvements through dark-sky friendly pedestrian lighting
6. “Shared street” concept — Traffic calming & multimodal improvements to Library Lane & Gallup St
7. Southern Trail Connection improvements



# Shared Street





# Gallup Street - Existing





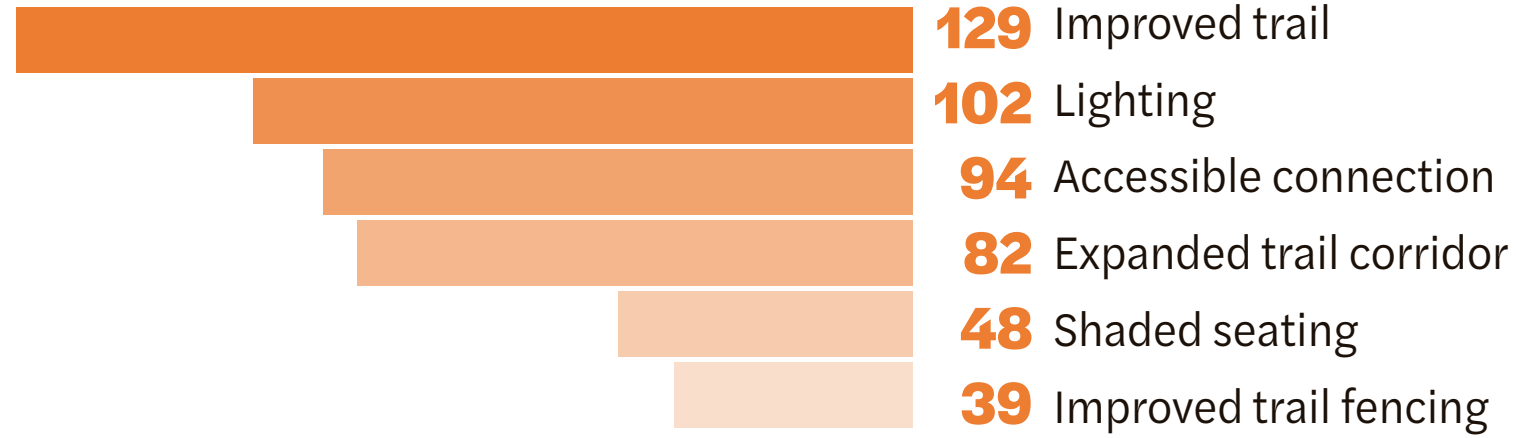
# Gallup Street - as a Shared Street





# Survey #2 Results

## Southern Trail Connection



Lots of families walk a loop around the lake and then walk their kids to Gallup playground. The crossing needs to be formalized on both sides of the street.



Lighting is very important for this area.

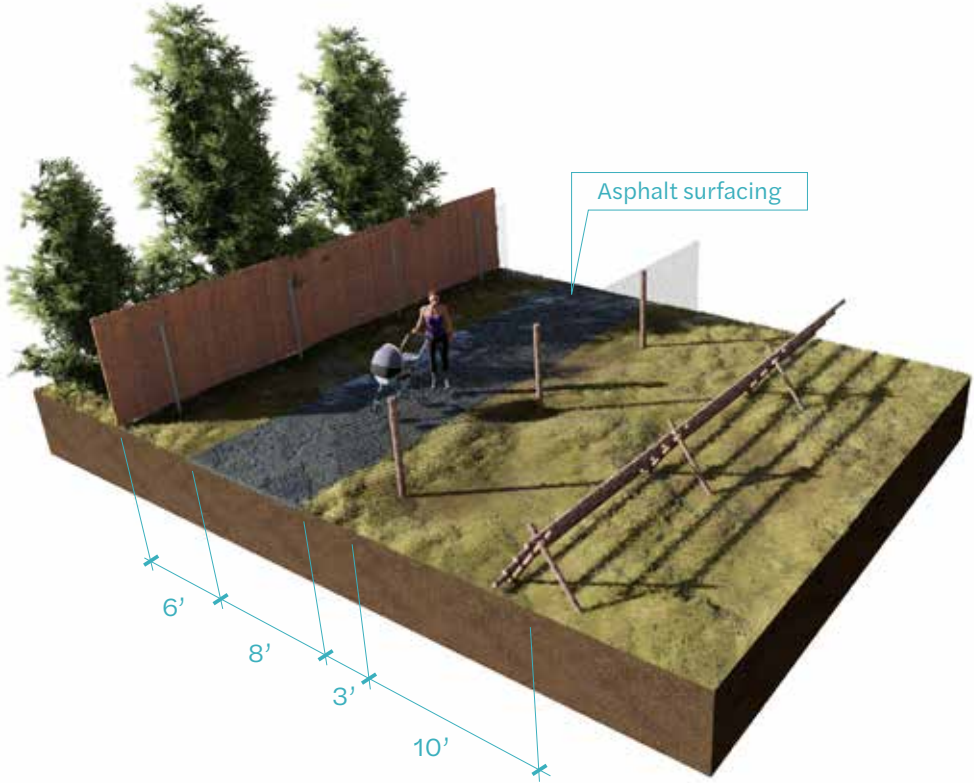
Definitely more shaded seating and rain/hail shelter is needed on this section.

This part of the trail is very closed in by fences, expanding the view would be ideal. This is the only way for those of us who run/walk/bike to loop around the park so it's important.



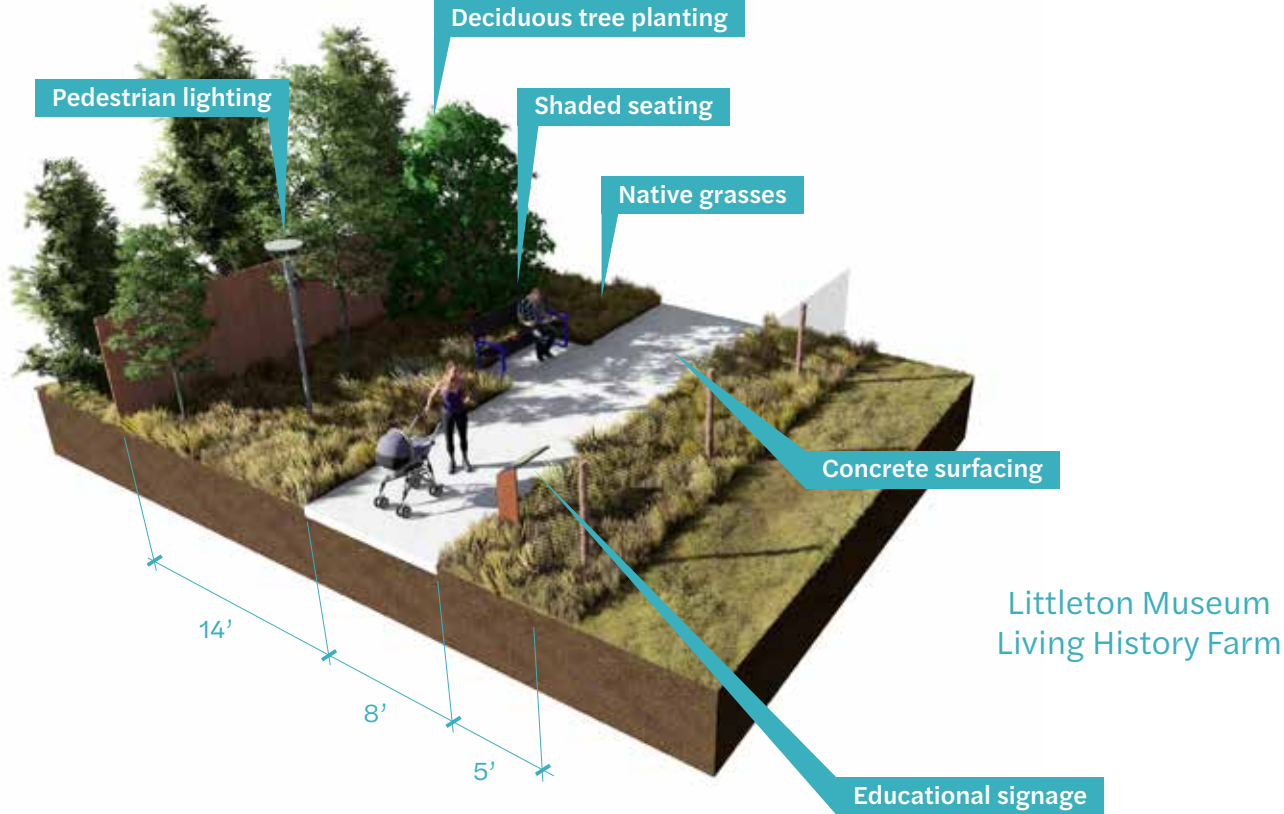
# Southern Trail Connection

Carmelite Monastery



Littleton Museum Living History Farm

Carmelite Monastery





# Concept Alternative #1 - "Restore & Connect"

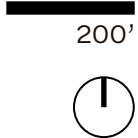
## Summary



Lighter touch that rejuvenates existing park program and amenities in current locations

Improvements to existing park walks and access

Provides similar park amenities as exist today





# Concept Alternative #2 - "Cultural Core"

## Summary



Focus on re-envisioning Bemis Library Campus and Gallup Gardens to create the Cultural Core

Expanded program and amenities throughout the Ketring-Gallup Park complex

Additional park walks and access points

Remains true to existing park character and uses



## Summary & Next Steps



KETRINGTON-GALLUP PARK  
MASTER PLAN

**Take the survey to provide additional feedback on the  
concept alternatives!**

*Scan the QR Code to  
access the survey*



*Or go to this link:  
[bit.ly/kgpmps3](https://bit.ly/kgpmps3)*

## **OPEN HOUSE**

**When:** Monday, December 11

**Time:** 5:30pm-7:30pm

**Location:** Bemis Public Library





**Stay Connected**



**KETRING-GALLUP PARK  
MASTER PLAN**

**For additional questions, please contact:**  
**Kelsey Stansfield**, Project Manager  
[kstansfield@littletongov.org](mailto:kstansfield@littletongov.org)

**Visit the web page:**  
[LittletonCO.gov/Ketring-GallupPark](http://LittletonCO.gov/Ketring-GallupPark)

**Thank you for attending & participating!**

