

Creating Safer Connections for Our Community

Littleton is investing in transportation improvements across the city. Many of these improvements focus on making Littleton an increasingly connected and accessible place to better support our active community. One project that supports this vision is the County Line Trail Connections project. This project is close to wrapping up design and will improve safety and connectivity for pedestrians and bicyclists along County Line Road and the High Line Canal Trail.

Project Facts

Lead Agency: City of Littleton

Partner Agencies: Douglas County, the High Line Canal Conservancy, South Suburban Parks and Recreation, the Highlands Ranch Metro District, and Denver Water

Funding Source: Denver Regional Council of Governments Transportation Improvement Program

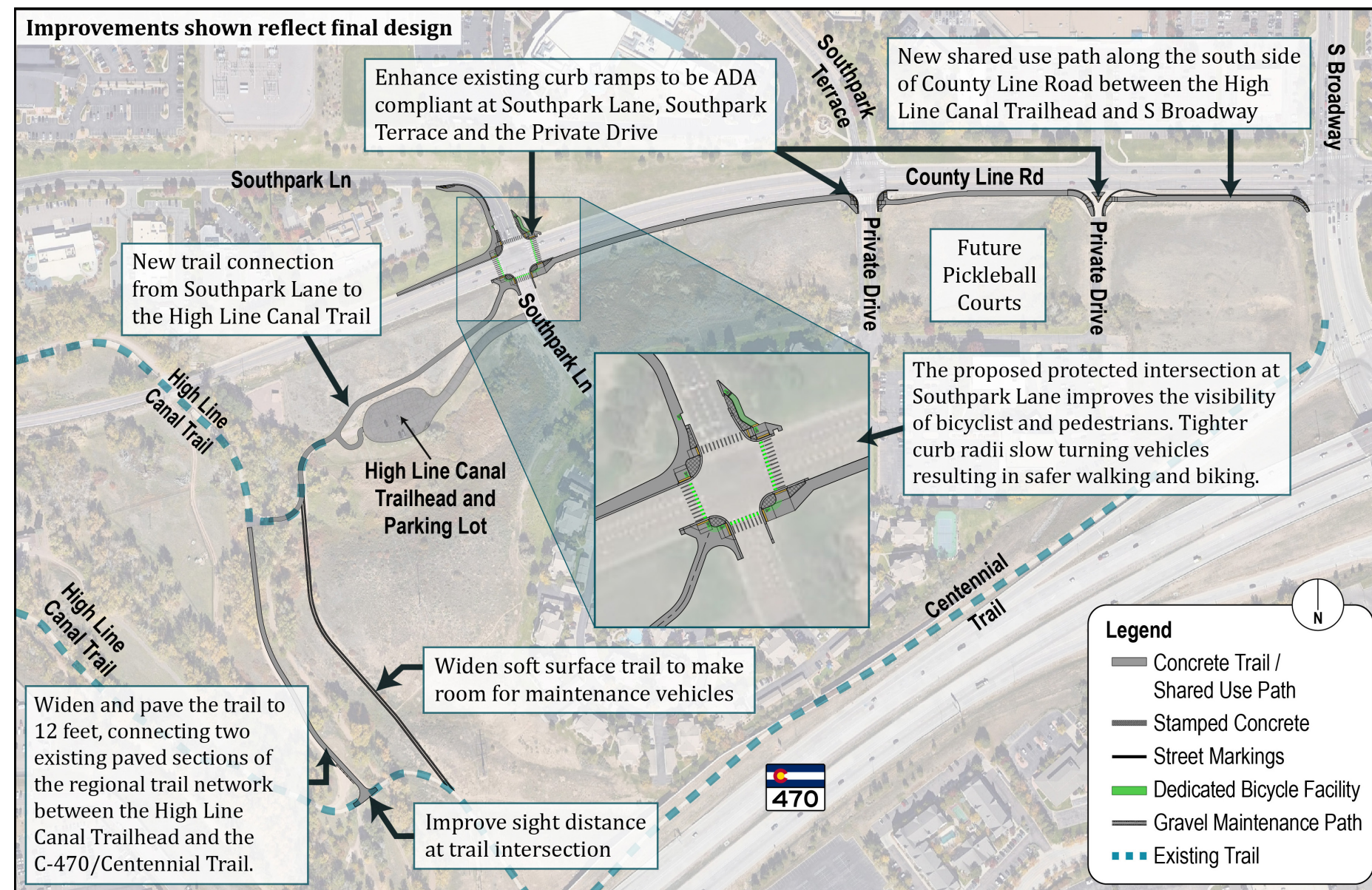
Design Completion: Late Fall 2025

Construction Timeline: 2026

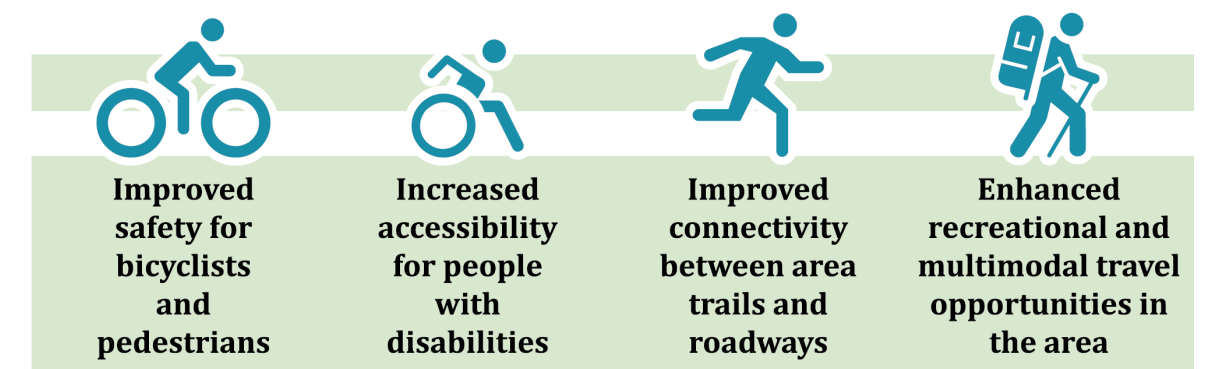
Planned Trail and Path Improvements

- Build a new shared-use path along the south side of County Line Road between the High Line Canal Trailhead and Broadway, improving travel options and connecting to nearby amenities like the new pickleball facility.
- Widen the unmaintained soft surface trail just east of the High Line Canal Trail to better accommodate maintenance vehicles.
- Realign the southern intersection of the High Line Canal Trail to improve sight distance.
- Upgrade and widen the High Line Canal Trail between the High Line Canal Trailhead (just south of County Line Road) and the C-470/Centennial Trail. This improvement will replace the existing unmaintained surface with concrete, connecting the already paved sections to the north and south.

County Line Trail Connections Project Planned Improvements



Project Benefits



Intersection Enhancements

- Add features to make the County Line Road/Southpark Lane intersection a "Protected Intersection" (see the reverse side/page 2 for details). This will make it easier for drivers to see bicyclists and pedestrians crossing the intersection and slow traffic to allow for safer walking and biking.
- Create a complete connection for bicyclists from Windemere Street to the north across County Line Road to the High Line Canal Trail and the Centennial (C-470) Trail to the south.
- To the east of the protected intersection, the existing curb ramps will be enhanced at the County Line Road/South Elati Street intersection and the private driveway on the south side of County Line Road to meet Americans with Disabilities Act (ADA) guidelines.

– Connect with Us –

For comments and questions, contact:

The City of Littleton-Project Team

303-795-3863

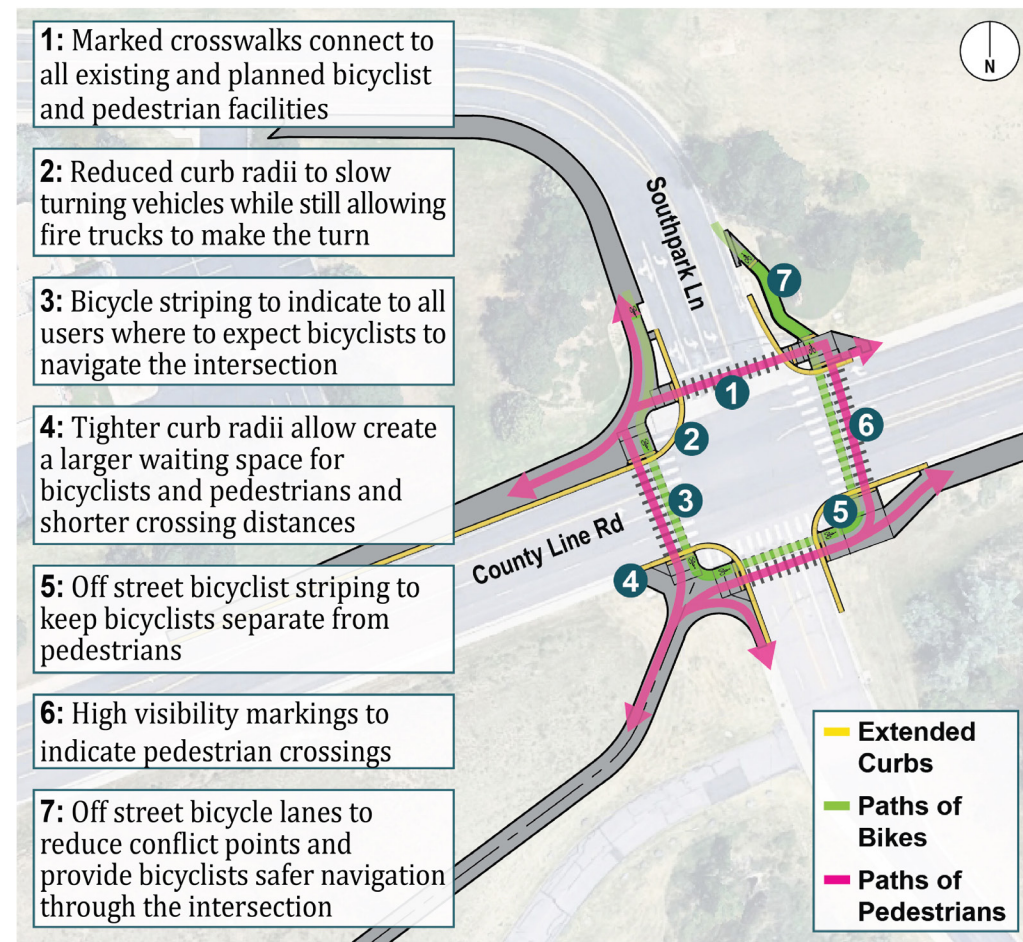
pwprojects@LittletonCO.gov

tinyurl.com/LittletonCLTC



A Safer Intersection Coming to County Line Road/Southpark Lane

The City of Littleton is planning to upgrade the County Line Road/Southpark Lane intersection a protected intersection to make it safer for those walking and biking through.



Prioritizing Safety Around Littleton!

The County Line Road/Southpark Lane intersection will be one of the first protected intersections in Littleton. This is a proven, cost-effective way to transform an intersection to maximize safety benefits. The city plans to roll out this similar concept in the next five years at several locations, including three along Mineral Avenue at Elati Court, Jackass Hill Road, and Platte Canyon Road.

Need for Safety Improvements

Data strongly supports the need for addressing crashes when vehicles are turning.

Of all **pedestrian or bicycle** crashes within the DRCOG region:

1/3 occur when a vehicle is turning* **13%** occur with right turning vehicles

&

Of all **bicycle** crashes within the DRCOG region:

25% occur when a vehicle is turning

* <https://engage.drcog.org/active-transportation-plan>, Appendix D, pages 28-29

Protected intersections function similar to standard intersections controlled by traffic signals, which means everyone is already familiar with the basic idea of how to navigate them. It's not a completely new and confusing design!

Ultimately, protected intersections are a smart and cost-effective way to make our streets safer and more comfortable for everyone, no matter how they choose to get around. They bring predictability to busy corners, benefiting all.

Proven Effectiveness

Protected intersection designs have been shown to improve safety when compared to traditional intersection layouts.*

Drivers yield to bicyclists and pedestrians more often	Right turning speeds are lower with tighter turns around corners	Nearly 40% more bicyclists use the bike lane through the intersection	Fewer bicyclists ride on the sidewalk through the intersection	66% of bicyclists follow the marked path
--	--	---	--	--

* FHWA, Safety Evaluations of Innovative Intersection Designs for Pedestrians and Bicyclists, 2023

Protected Intersections Benefit All Travelers

Do you ever feel a little uneasy navigating a busy intersection as a pedestrian or bicyclist? Protected intersections are a type of intersection design that makes those crossings much safer and clearer for everyone – drivers, pedestrians, and bicyclists.

Protected intersections create dedicated spaces for each type of user. Instead of everyone traveling through the intersection at the same time, a protected intersection uses simple yet effective strategies to provide separate paths and reduce potential crashes.

County Line Road/Southpark Lane Protected Intersection Simulation

View from the northeast corner of the intersection looking southwest:

Smarter traffic lights:

Signal timing will be adjusted to better facilitate dedicated time and space for pedestrians and bicyclist to cross.

Prioritize Pedestrian & Bicyclist in stop condition:

Limiting some turn movements, like right on red, reduces conflicts between vehicles and potential bicyclist going straight.



Roomier corners:

Expanded corners provide a larger, more comfortable spot to wait as a pedestrian or bicyclist before crossing.

Bright green pavement markings for bikes:

These clearly mark where bicyclists should be, making them more visible to drivers.



Scan with your smartphone camera or go to: tinyurl.com/LittletonCLTC