



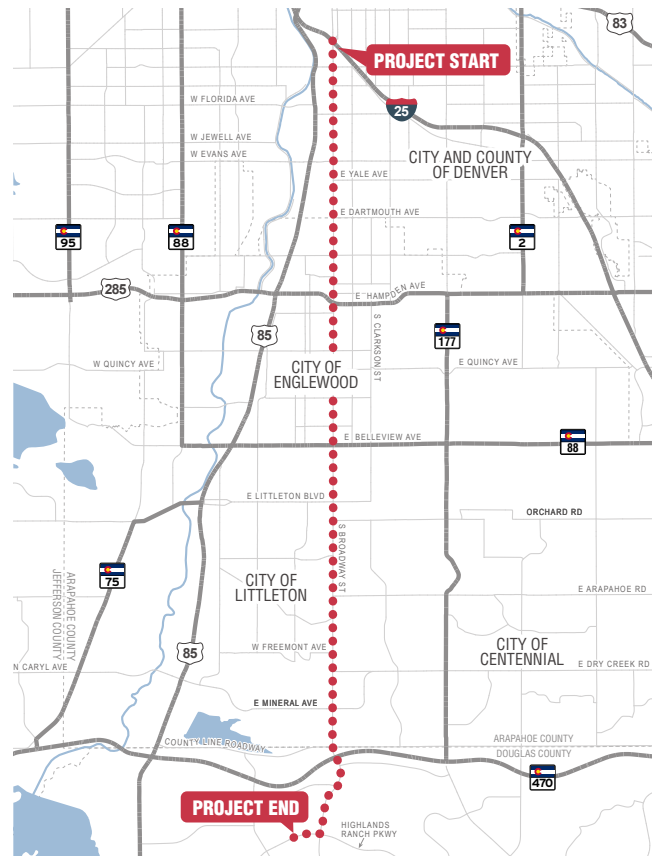
YOUR VOICE MATTERS!
www.littletonco.gov/Broadway-Corridor-Study



Learn More About the Study!

Broadway between I-25 and Highlands Ranch Parkway is a vibrant corridor where people live, work, eat, and shop. This 11-mile stretch of Broadway provides local and regional connections through the City and County of Denver, Arapahoe County, cities of Englewood, Littleton, and Centennial, and Douglas County. The City of Littleton is partnering with these agencies to study the transportation and land use conditions along this section of Broadway.

The study will examine existing conditions and future conditions for the different character areas along the corridor.



KEY CONSIDERATIONS

- Transportation
- Land Use
- Economics

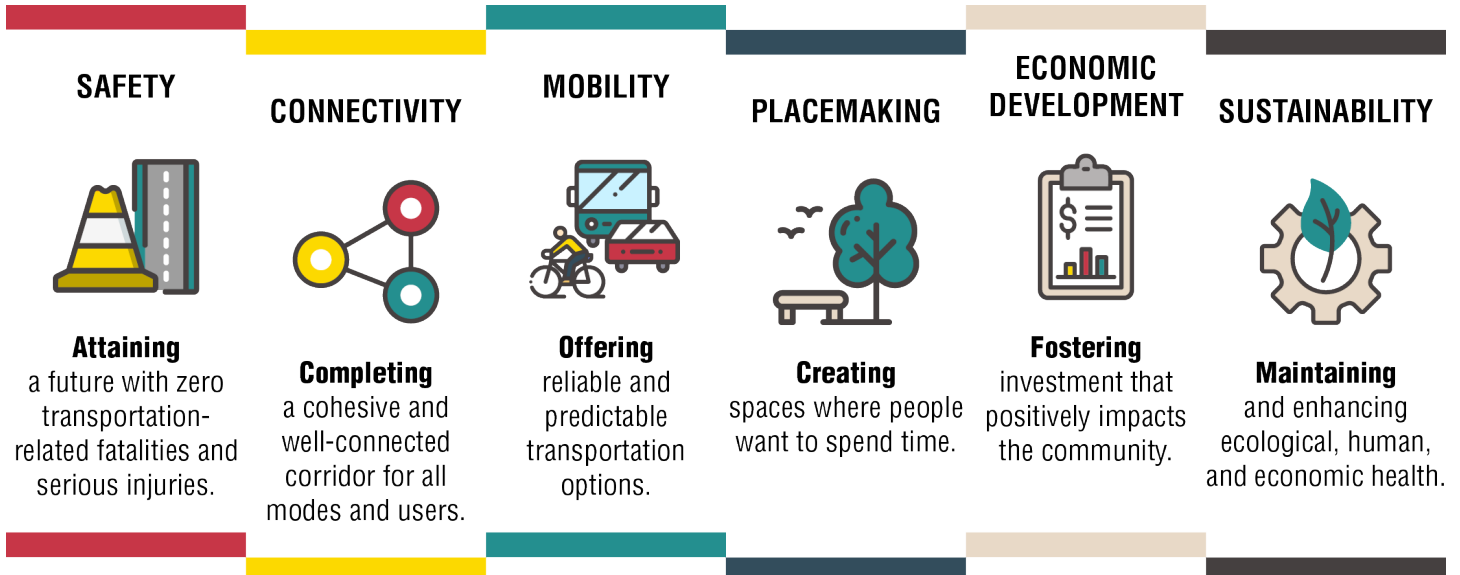
The study will include development and evaluation of alternatives based on a consideration of existing and future conditions, roadway geometry, residential and business access, traffic flow, environmental factors, the location of communities and other developed areas, and community and agency plans and input.

STUDY PHASES



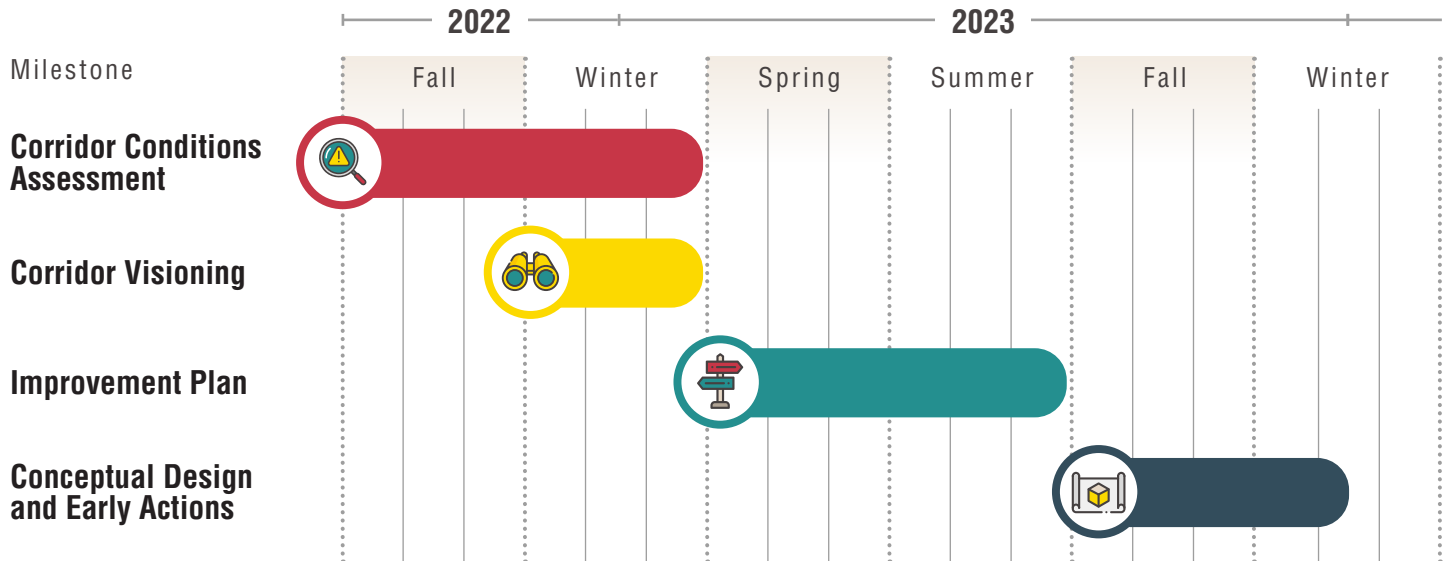
DRAFT STUDY GOALS

The following goals represent the desired outcomes for the proposed improvements to the corridor.



SCHEDULE

The study will conclude in December 2023, when the team will present findings and share the next steps for implementing construction. Funding for improvements has yet to be identified.



WWW.LITTLETONCO.GOV/BROADWAY-CORRIDOR-STUDY

Throughout the study, the city will provide several collaboration opportunities for residents and businesses to share ideas on how to improve the experience along Broadway. Scan the QR Code to learn more!